

Verflixt und Zugenäht

Kleidung nähen und mehr ... www.schneidern-naehen.de

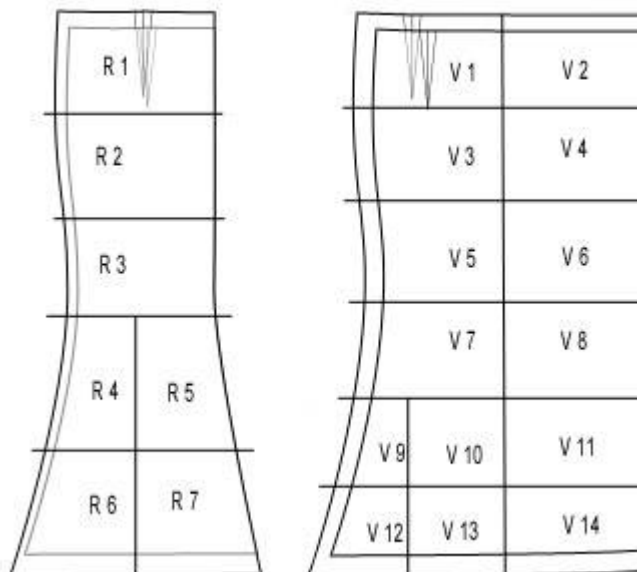
Schnittmuster: Afrikanischer Wickelrock Größe XS/S und M/L/XL

Die passende Nähanleitung gibt es unter:
<http://www.schneidern-naehen.de/wickelrock-afrika>

Drucken Sie das Schnittmuster aus. Dabei die **Seitengröße beibehalten** und **nicht** an die Seitengröße anpassen, sonst wird der Ausdruck verkleinert.



Schnittübersicht

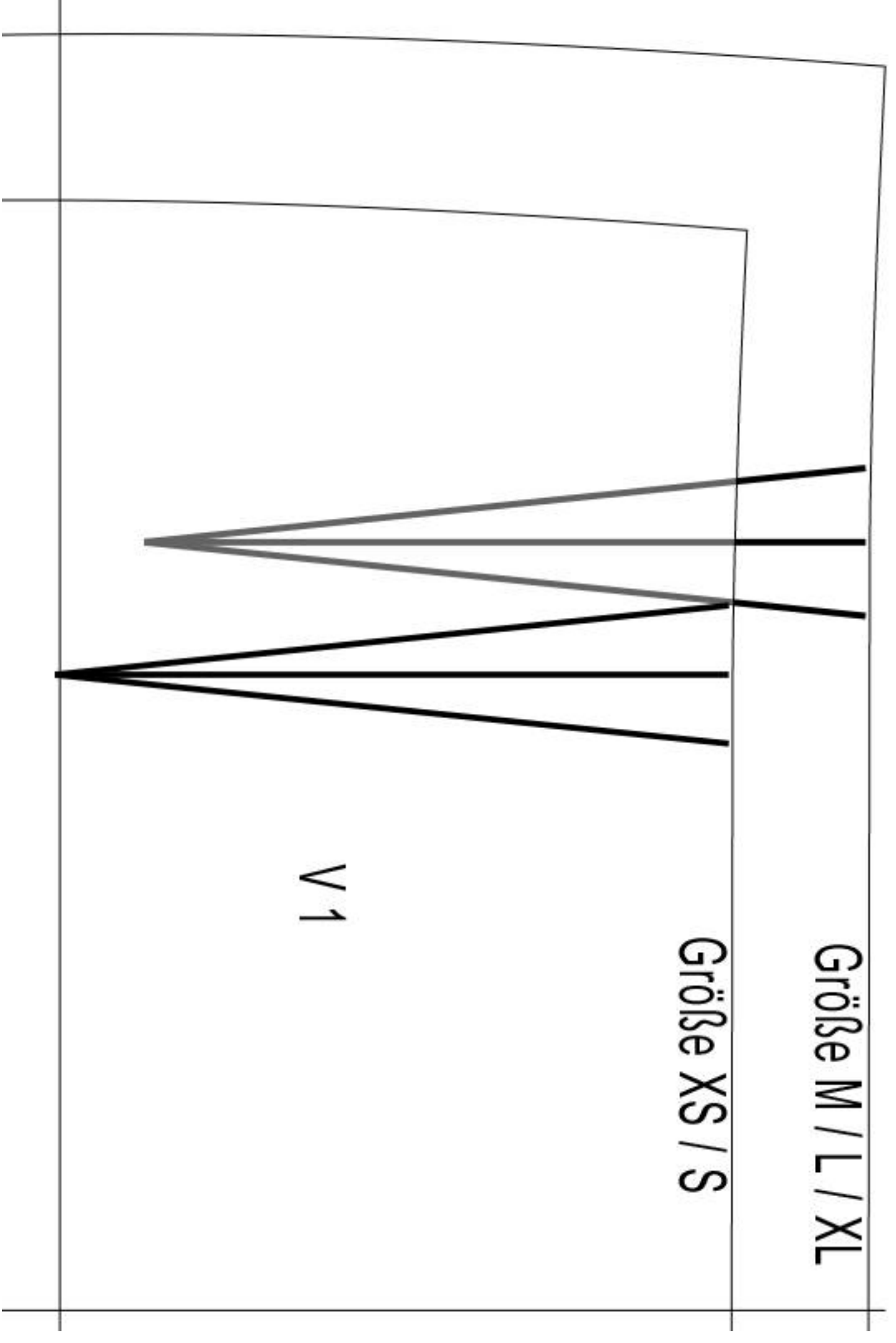


Schnitte ausdrucken und Blätter zusammenkleben, die Linien treffen aufeinander.

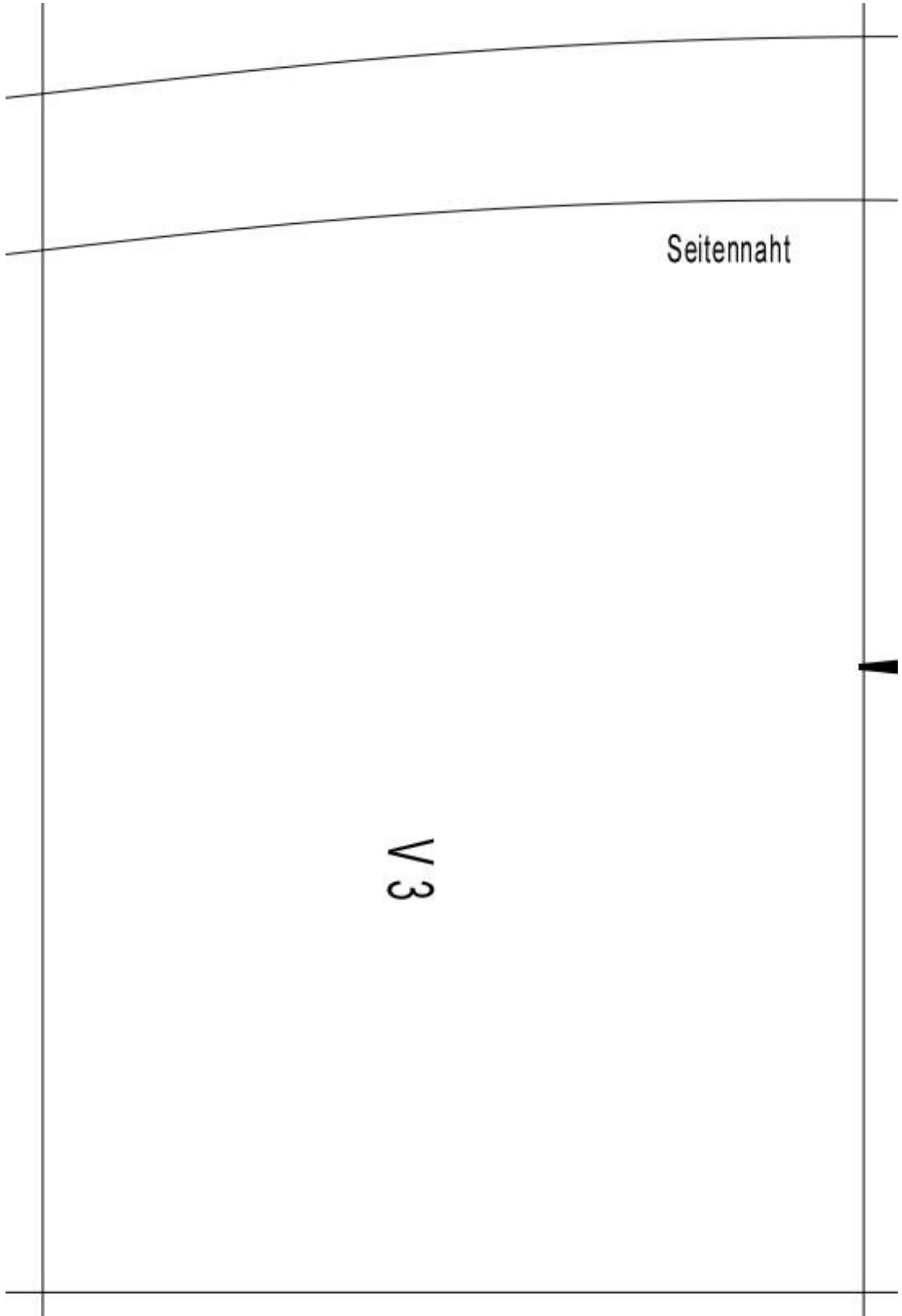
Größe M / L / XL

Größe XS / S

V 1



V2



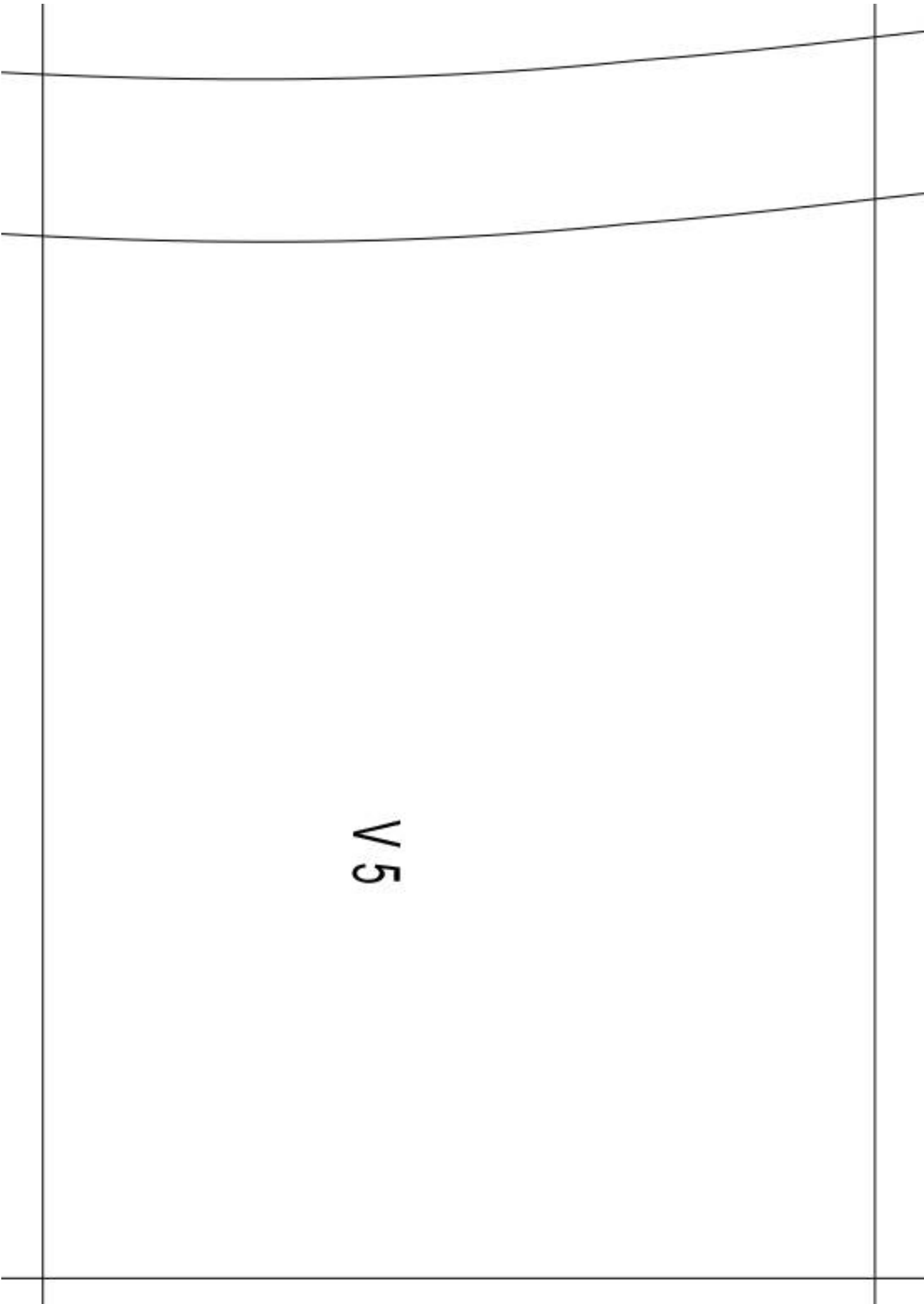
Seitennaht

V3

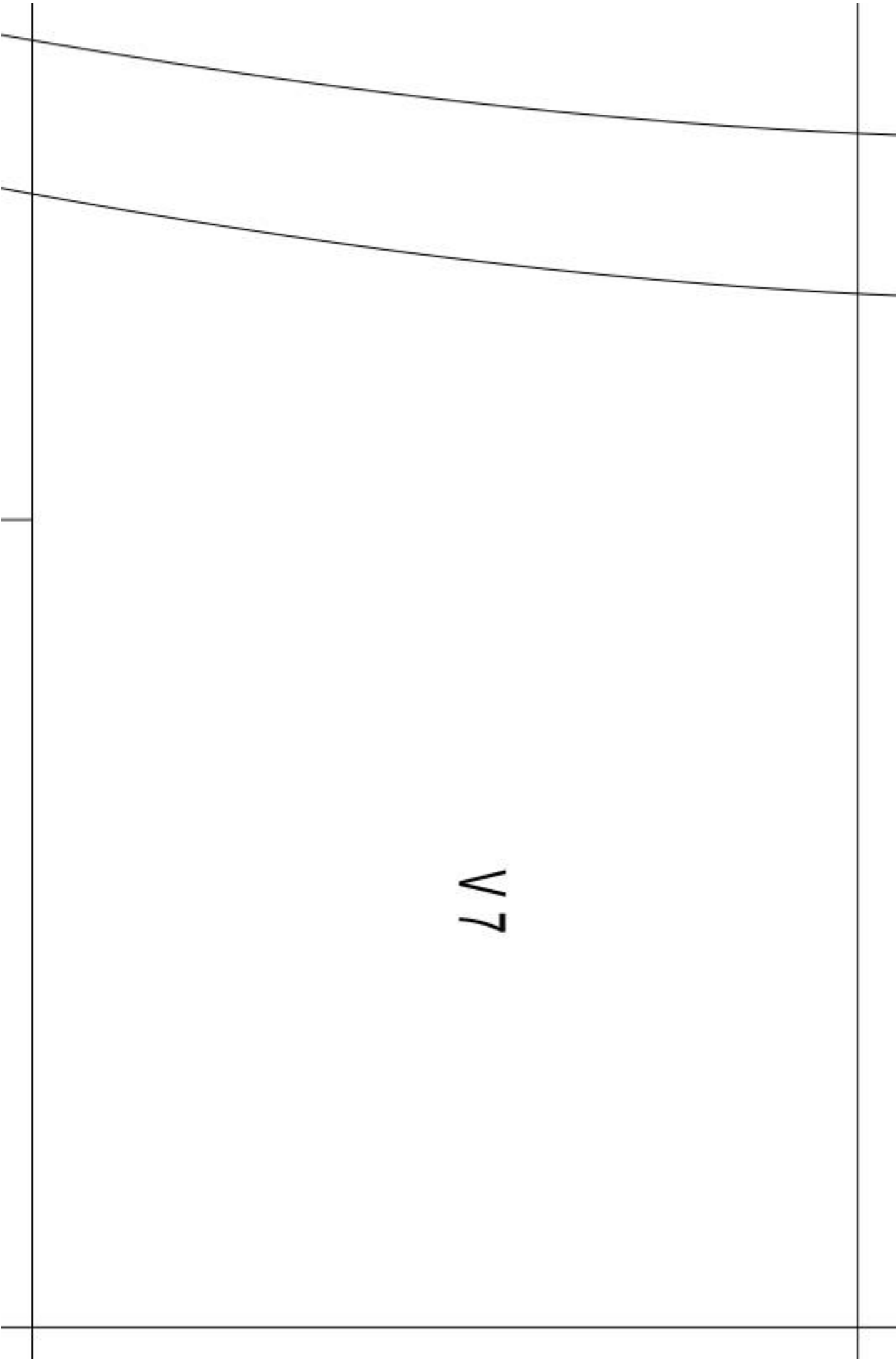


V4

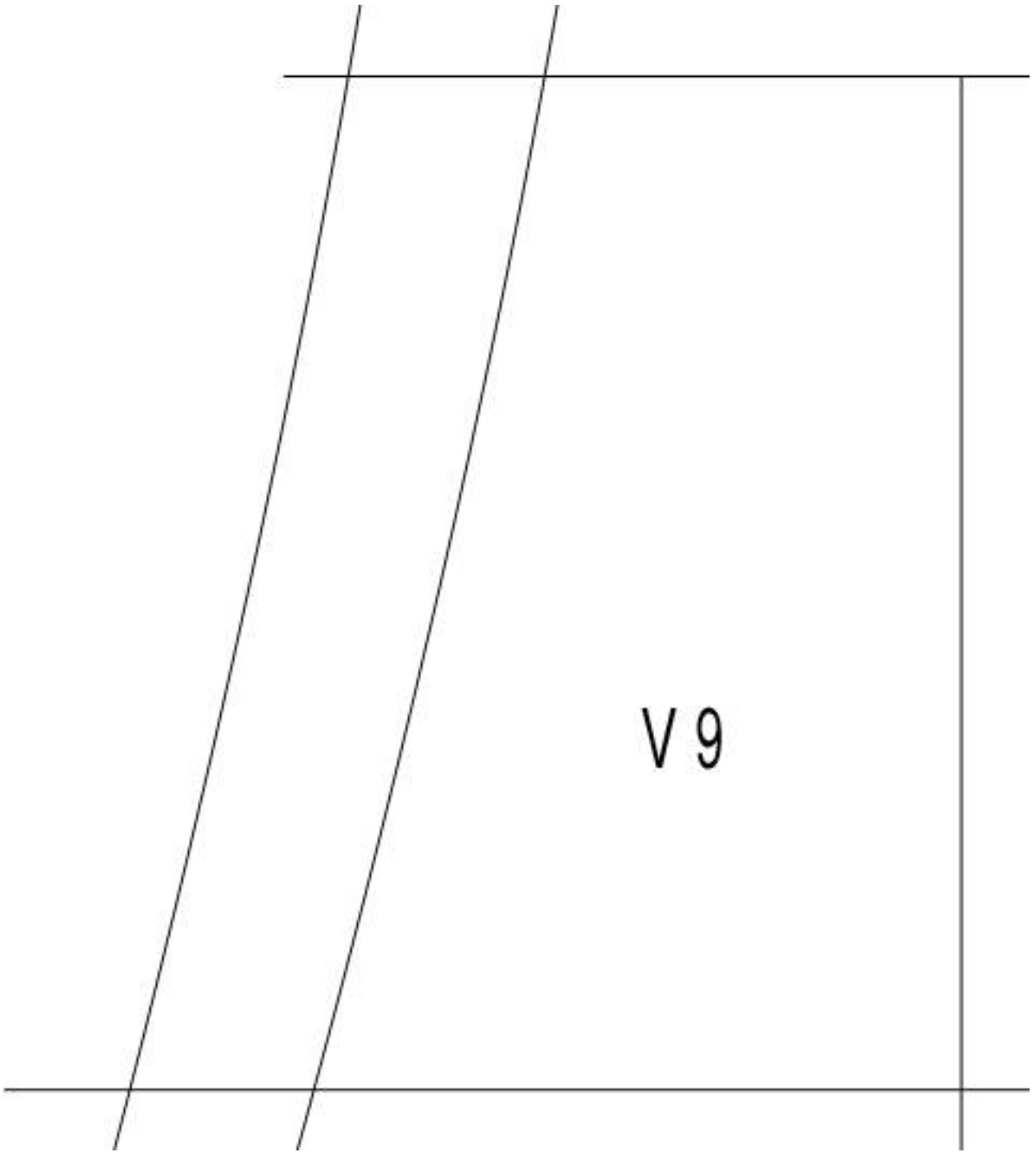
V5



V6



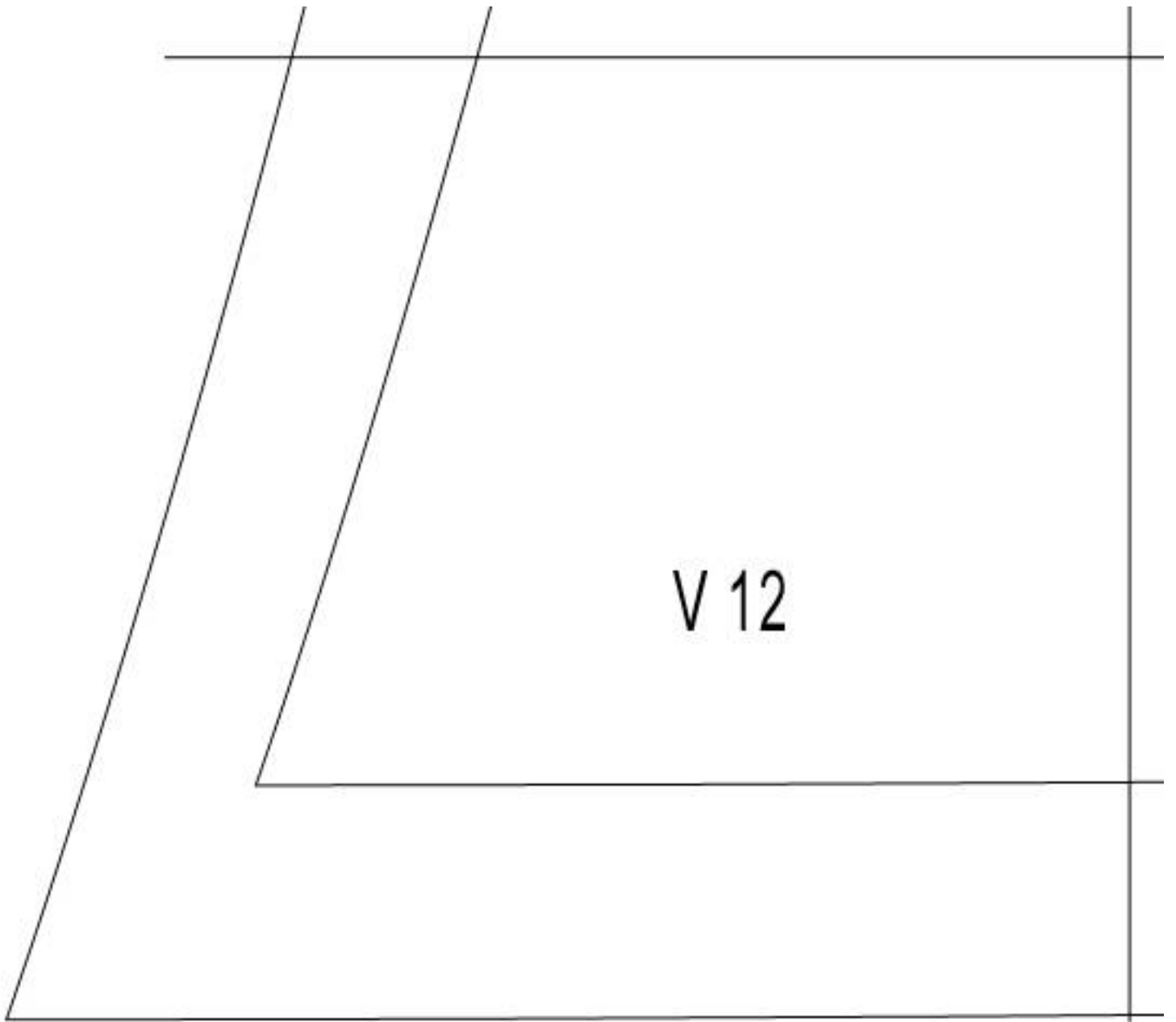
V 8



V 9

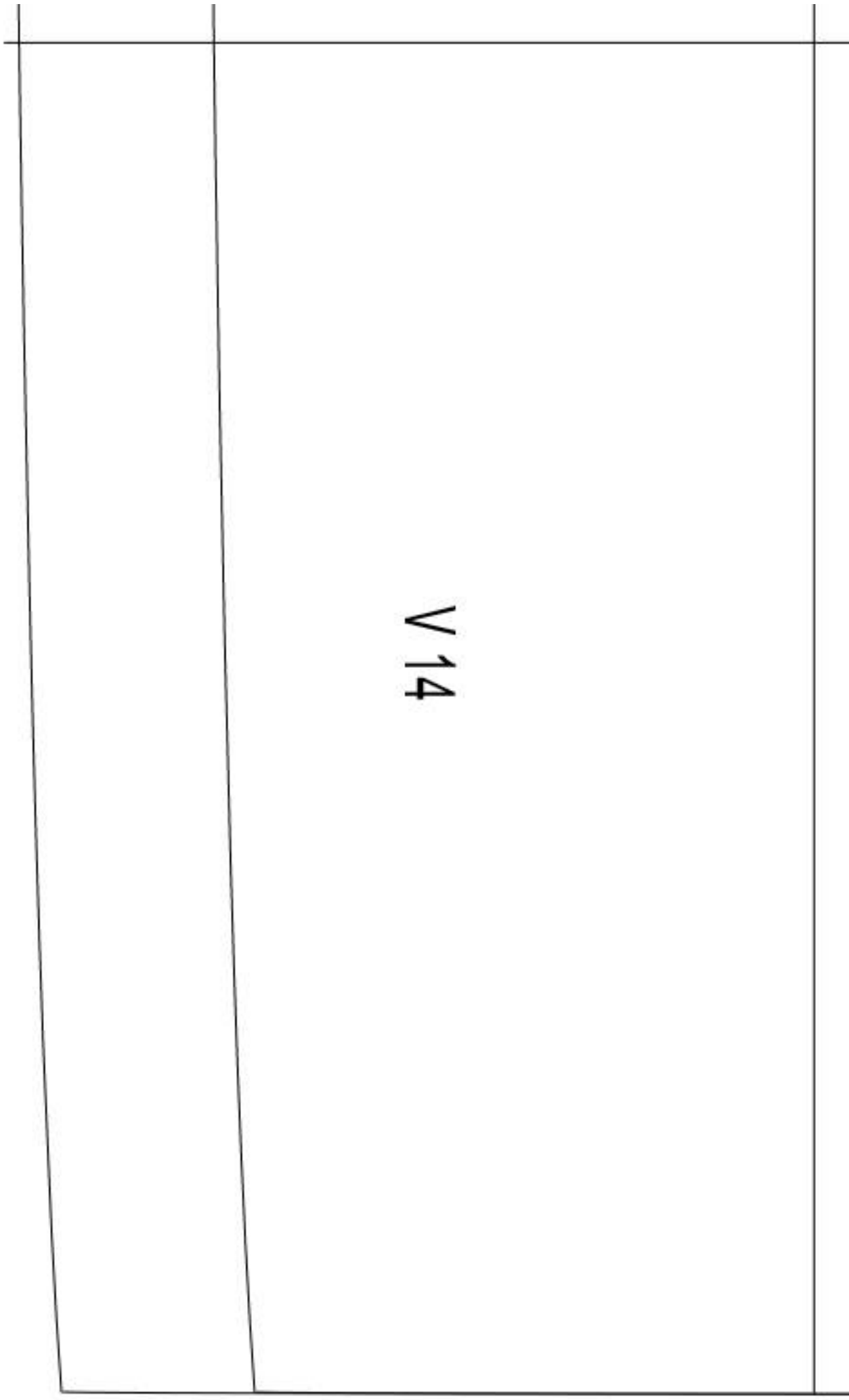
V 10

V 11





V 13

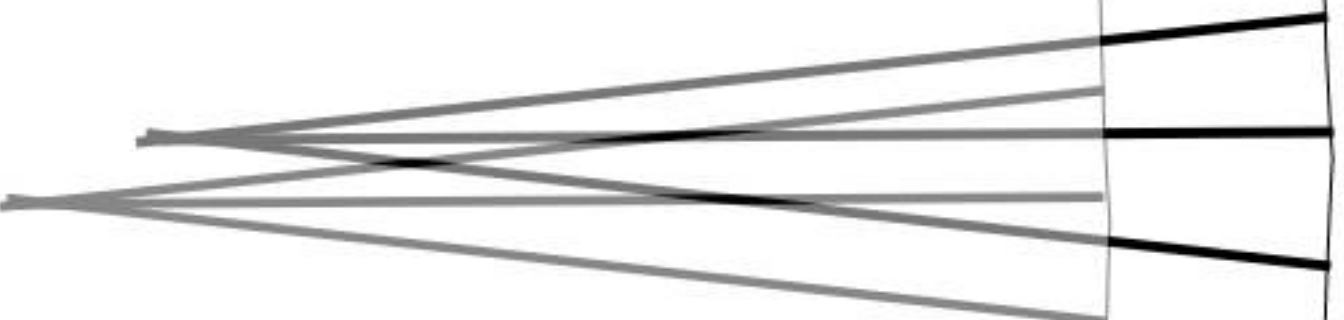


V 14

Größe M / L / XL

Größe XS / S

R 1



Seitennaht

A technical diagram of a garment, possibly a sleeve or a side panel, enclosed in a rectangular border. The diagram shows two curved lines representing the top edge of the garment, which are slightly curved downwards from left to right. The label 'Seitennaht' is positioned in the upper right area. The label 'R2' is centered vertically and horizontally. The label 'Rückwärtige Mitte - Naht' is located at the bottom center.

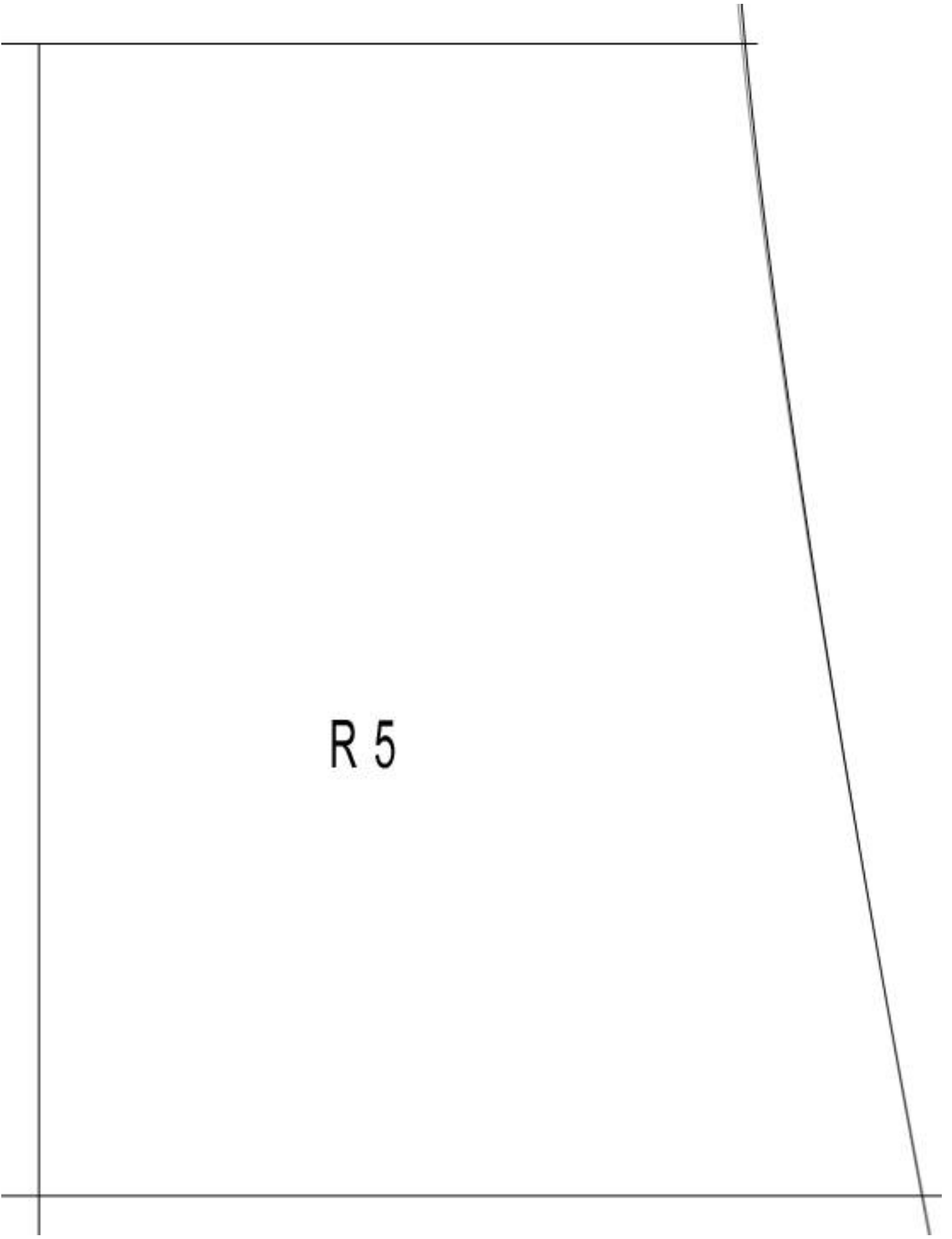
R2

Rückwärtige Mitte - Naht

R 3



R 4



R 5



A technical drawing on a white background. It features a horizontal line at the top and a horizontal line at the bottom, connected by a vertical line on the right side. On the left side, there are two parallel lines slanted at an angle, forming a trapezoidal shape. The text 'R 6' is positioned in the center of the drawing.

R 6



R 7