

# Verflixt und Zugenäht

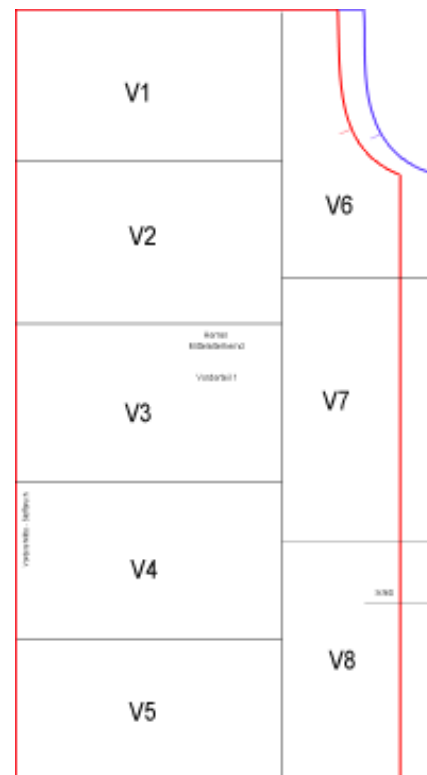
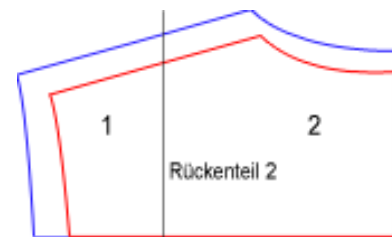
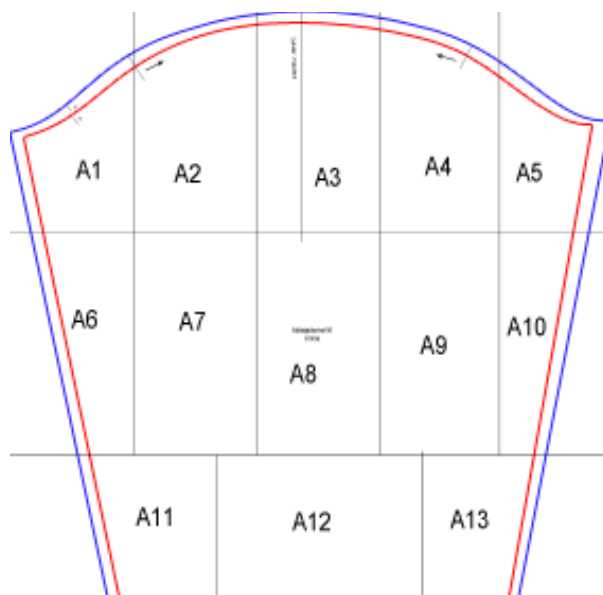
[www.schneidern-naehen.de](http://www.schneidern-naehen.de)

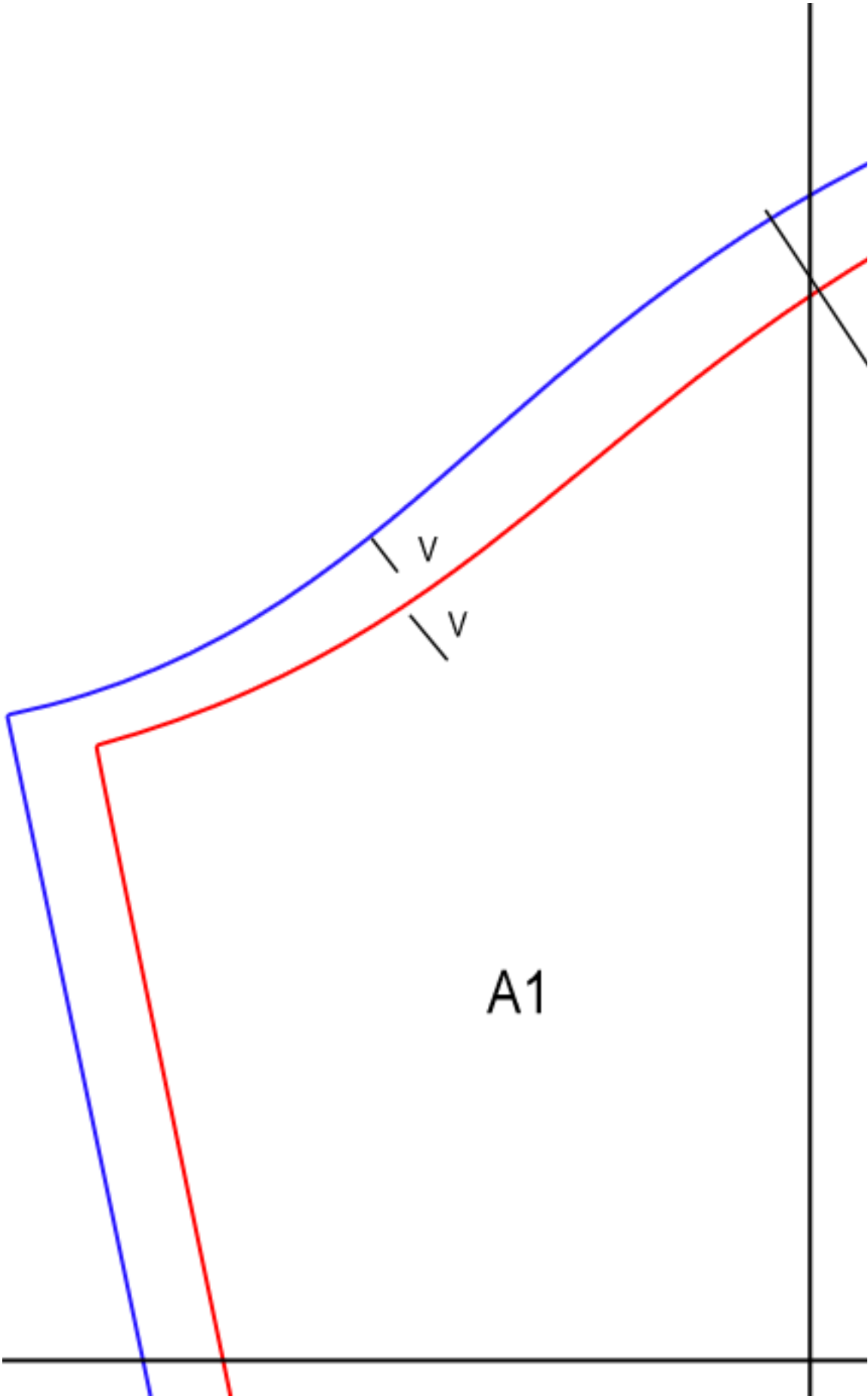
## Schnittmuster – Herren Mittelalterhemd

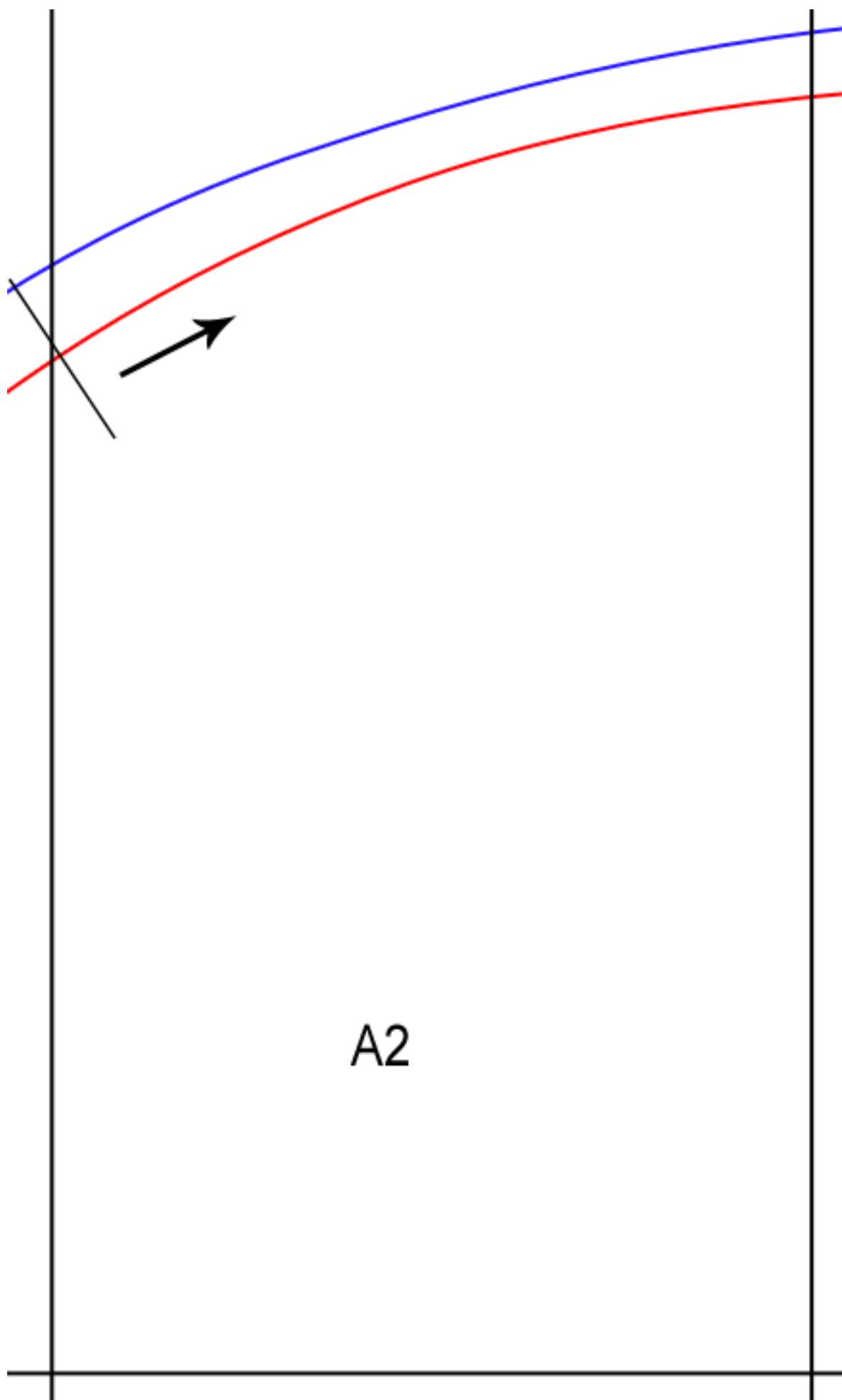
Drucken Sie das Schnittmuster aus. Kleben Sie die Teile an den schwarzen Linien, wie in der Übersicht zu sehen, zusammen. Die Linien treffen aufeinander.

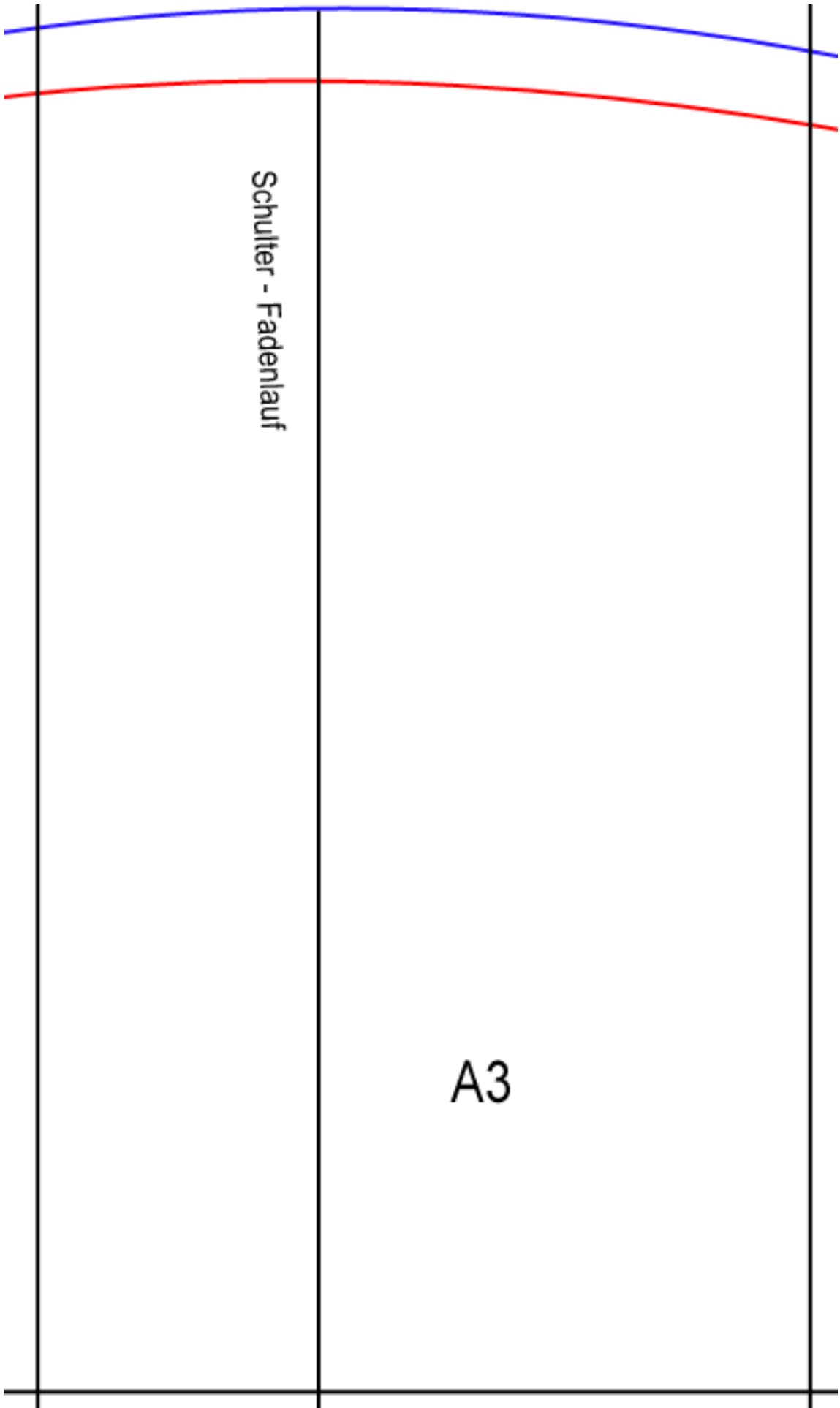
- Blau = Größe L / XL
- Rot = Größe S / M

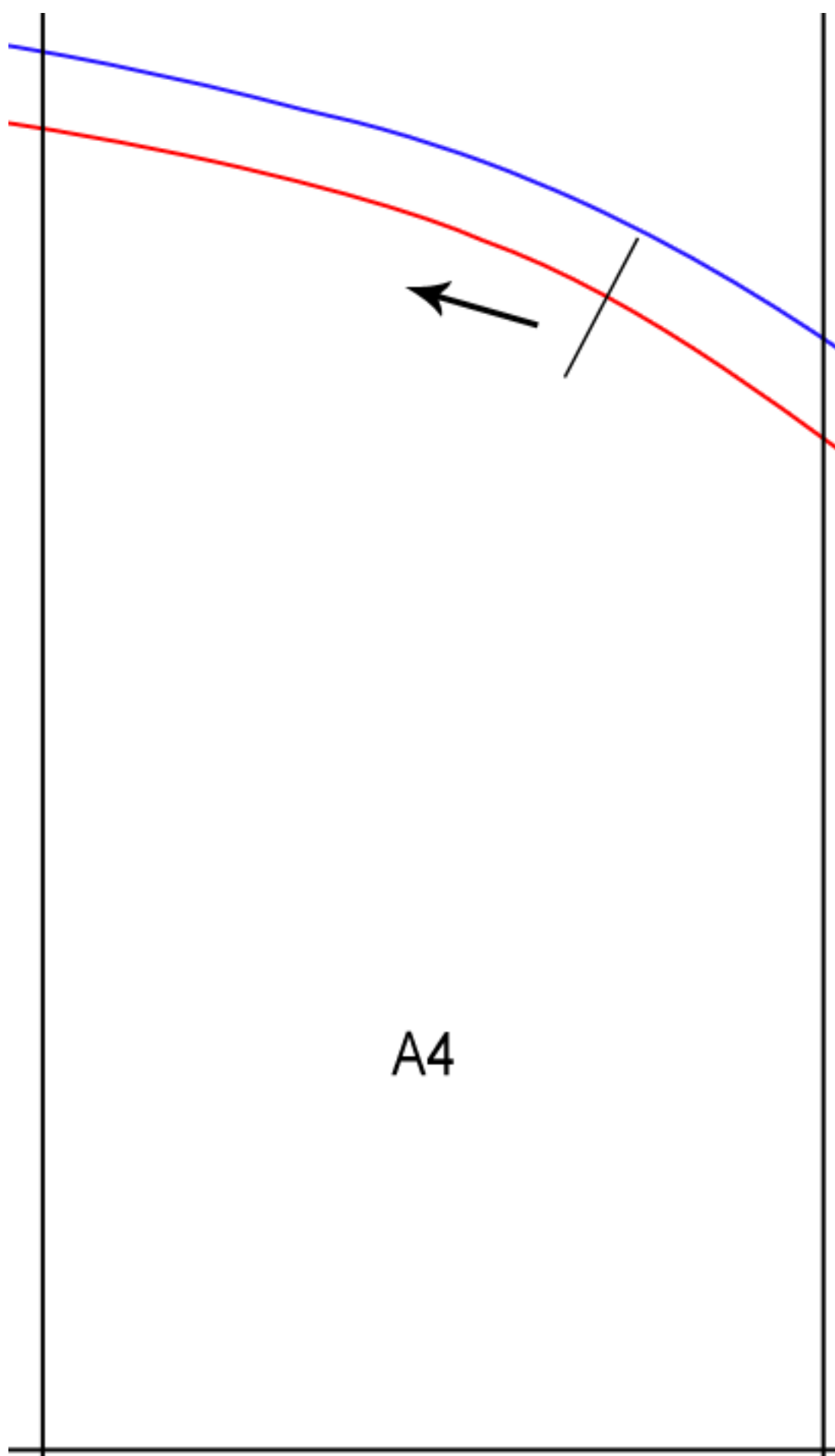
**Diese Schnitte wie in der Übersicht zu erkennen an den Linien zusammen kleben. Alle weiteren Schnittteile werden in einem Stück ausgedruckt.**



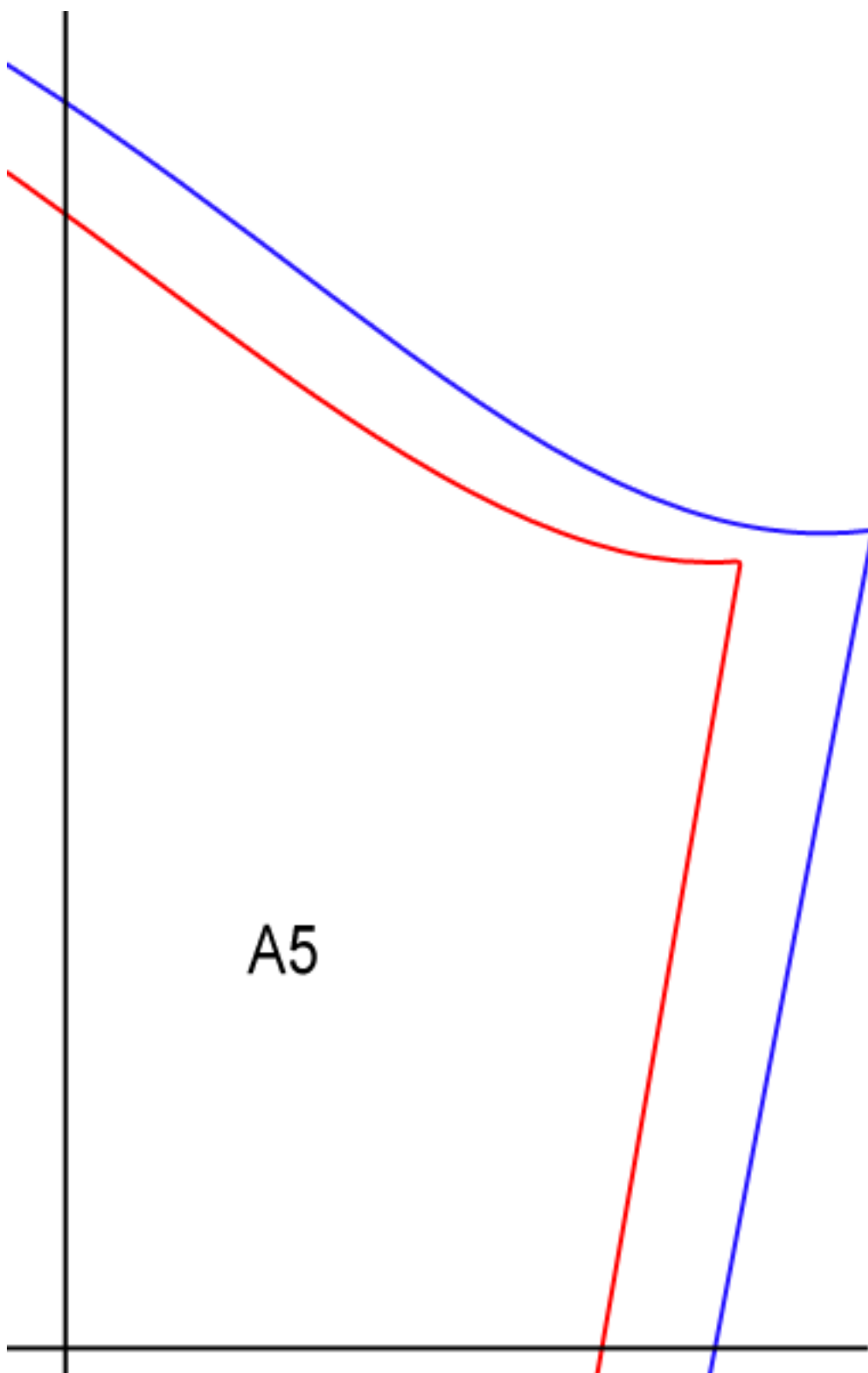


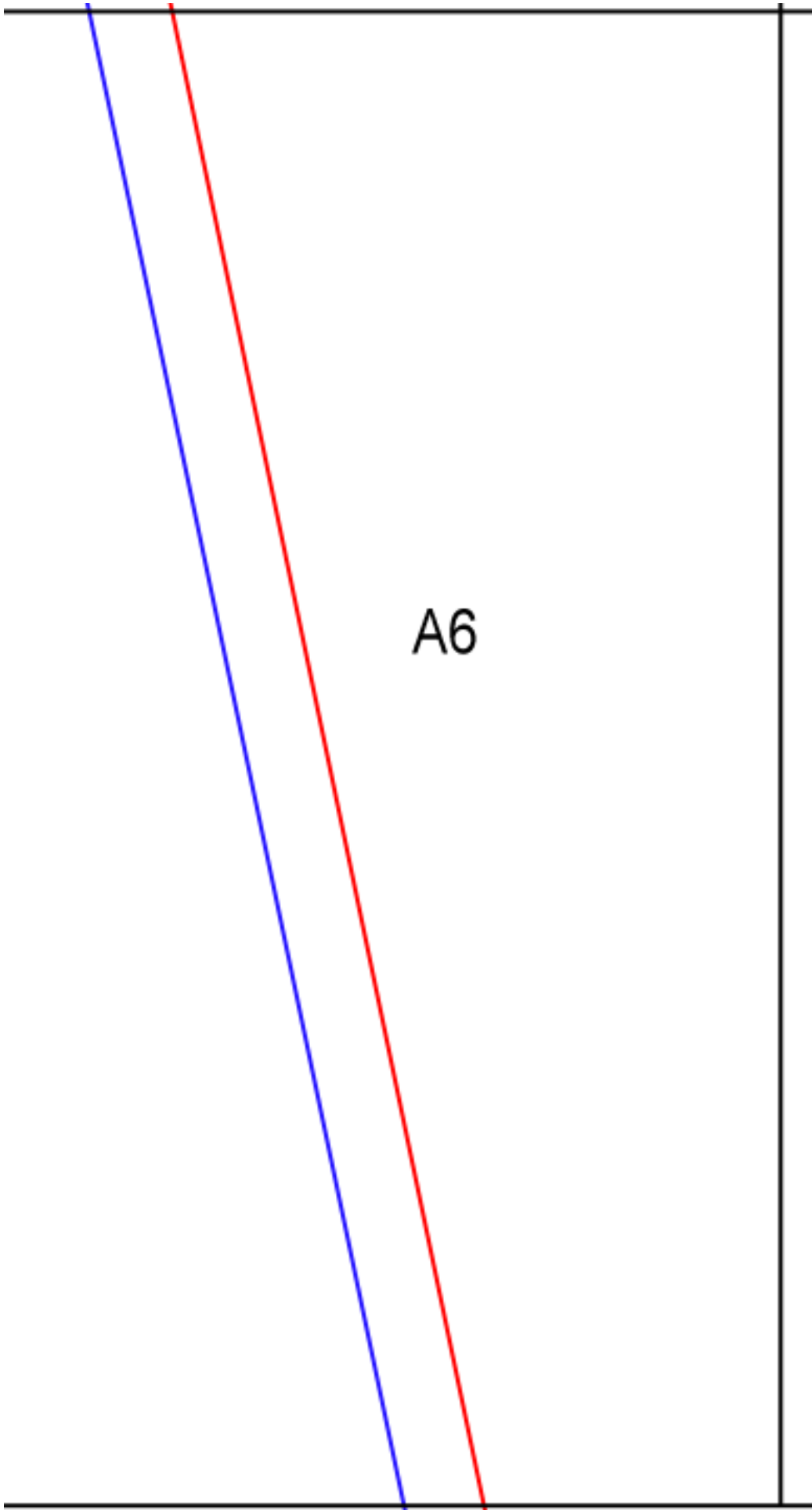






A4





A diagram of an A7 paper size. It consists of a large vertical rectangle with a horizontal line at the top and a horizontal line at the bottom. The text "A7" is centered within the rectangle.

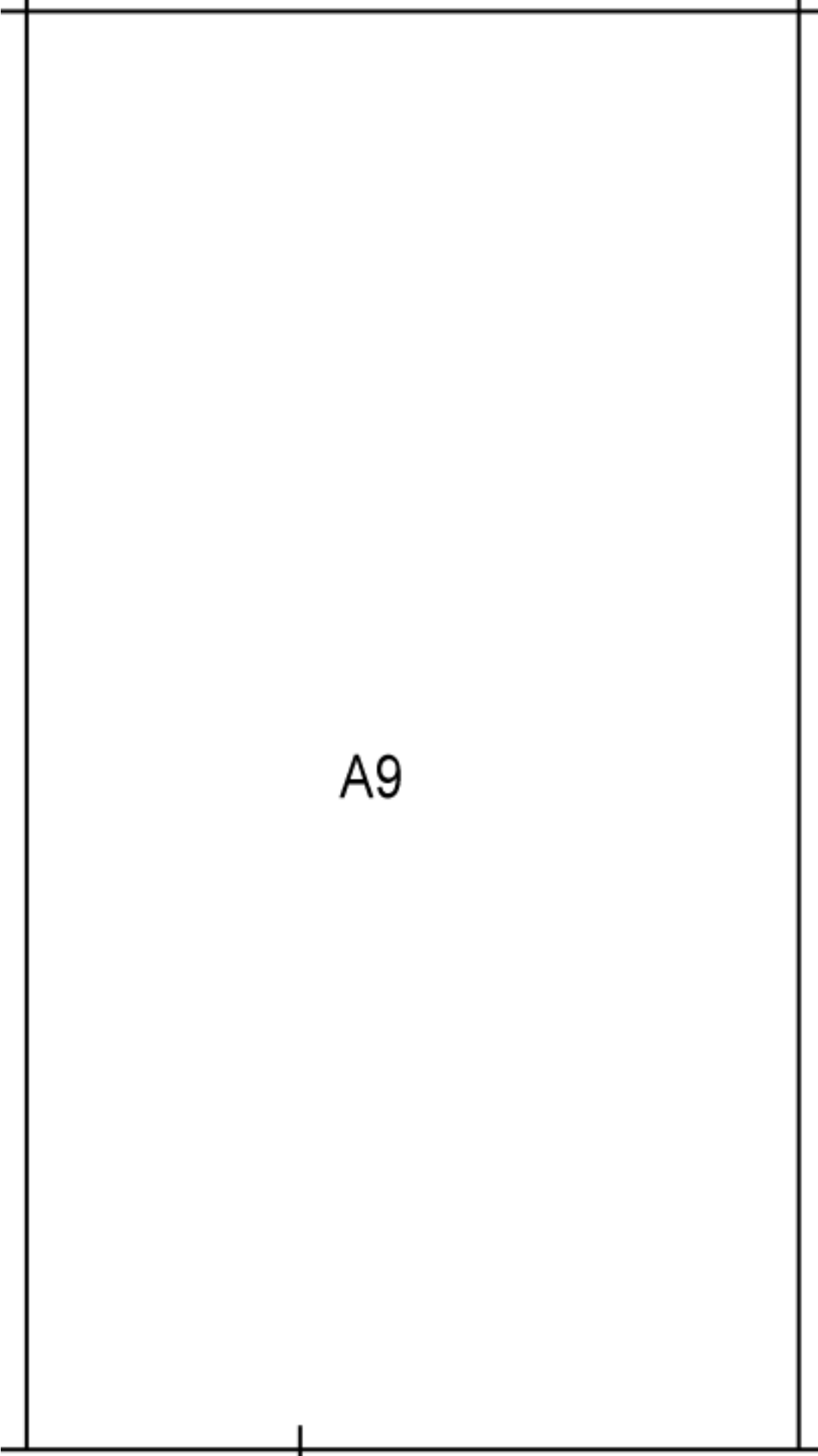
A7

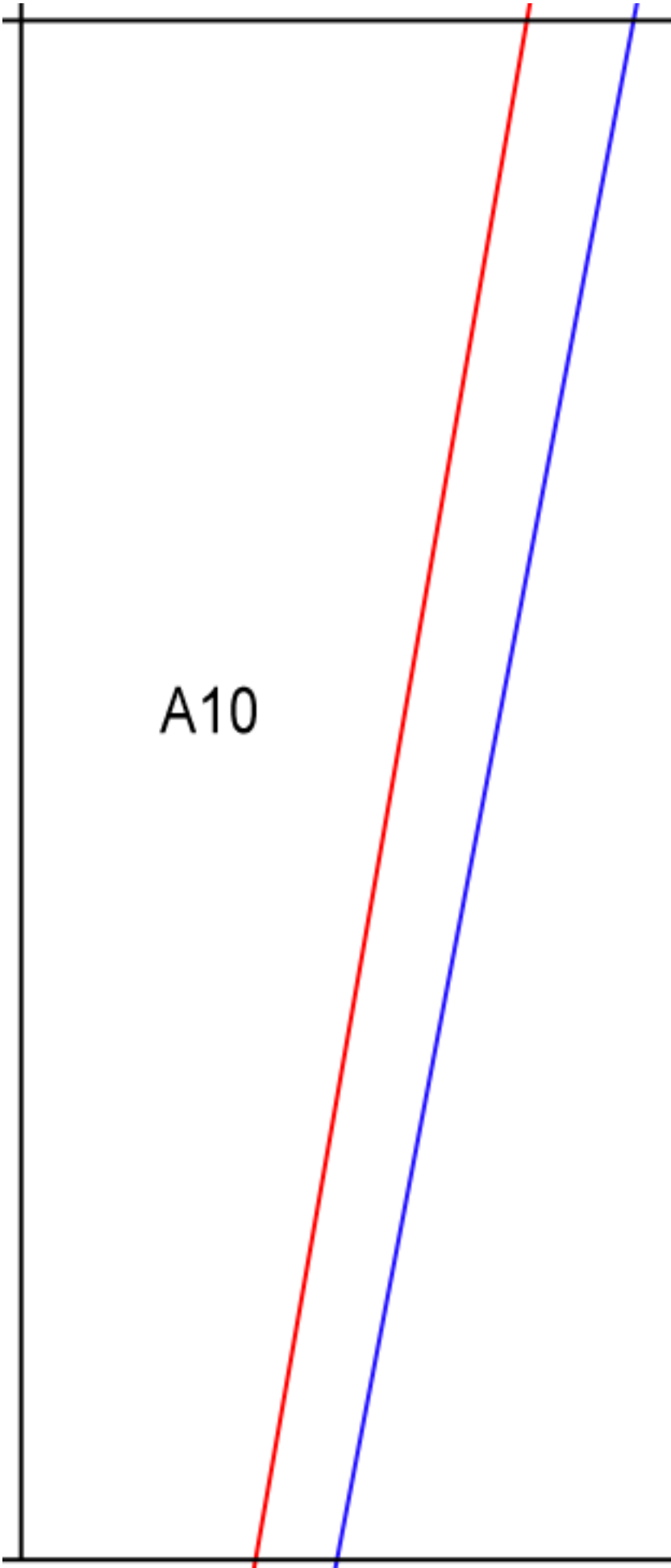


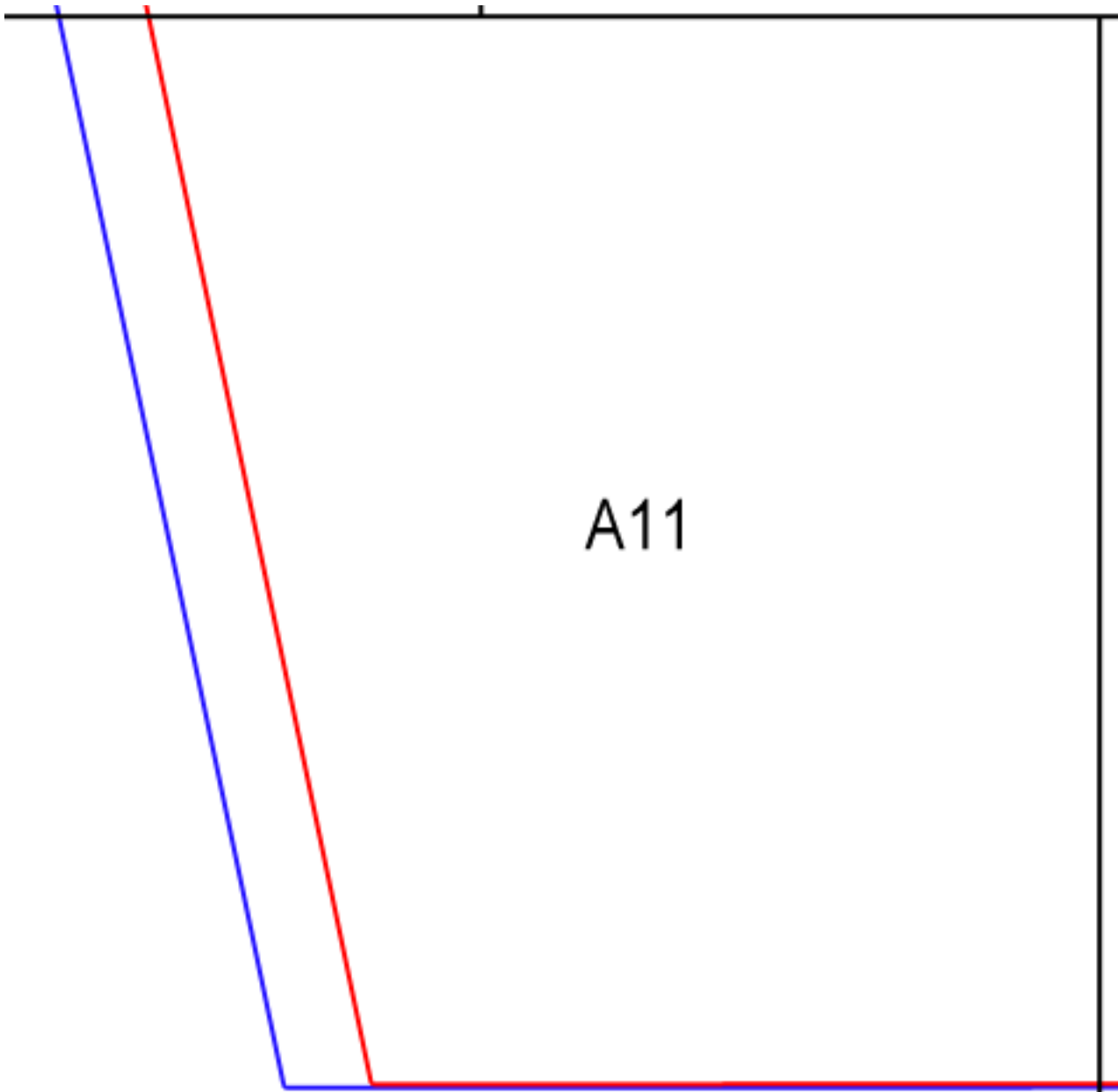


Mittelalterhemd  
Ärmel

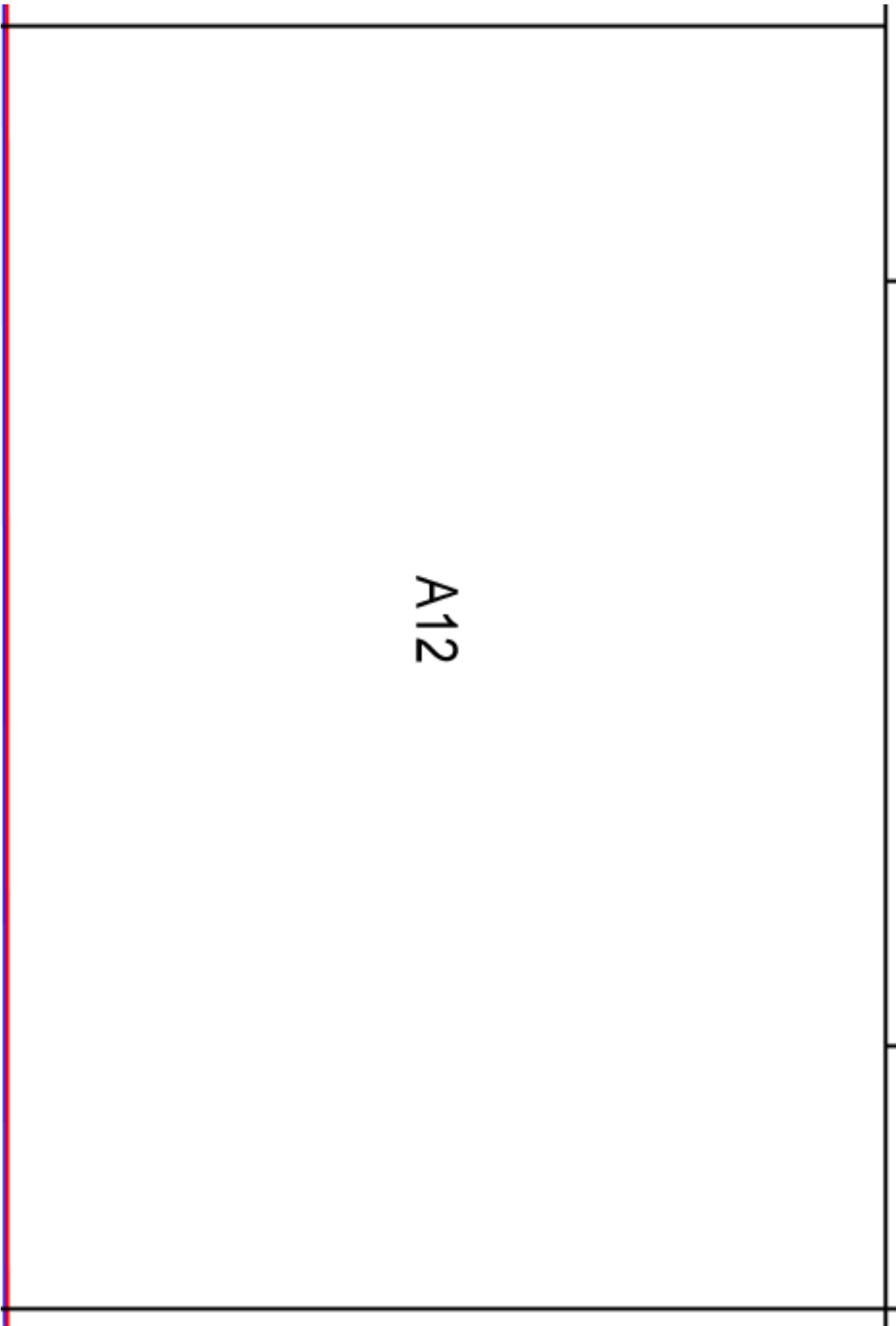
A8



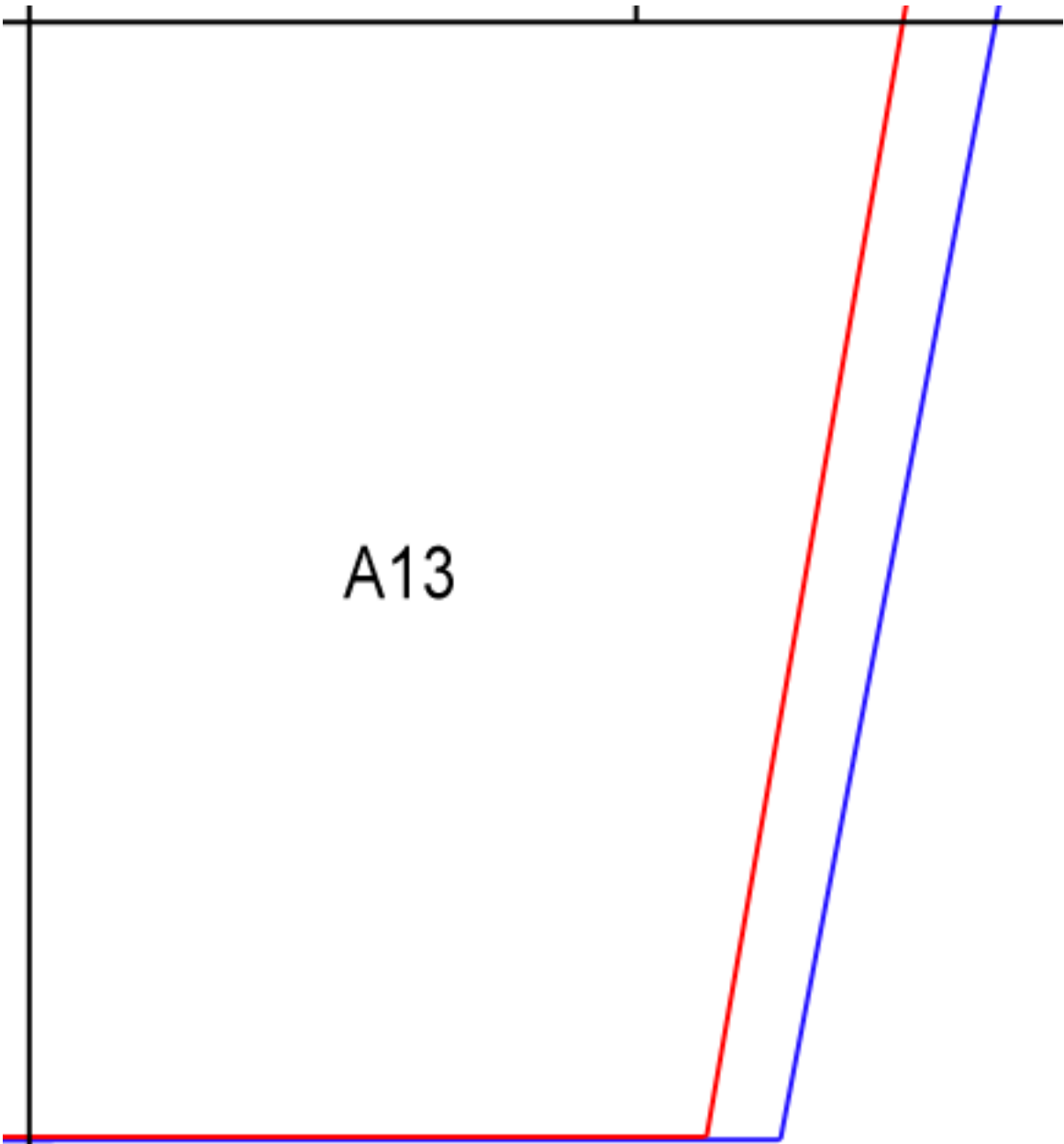




A11



A12



A13

Vordere Knopfleiste - Besatz



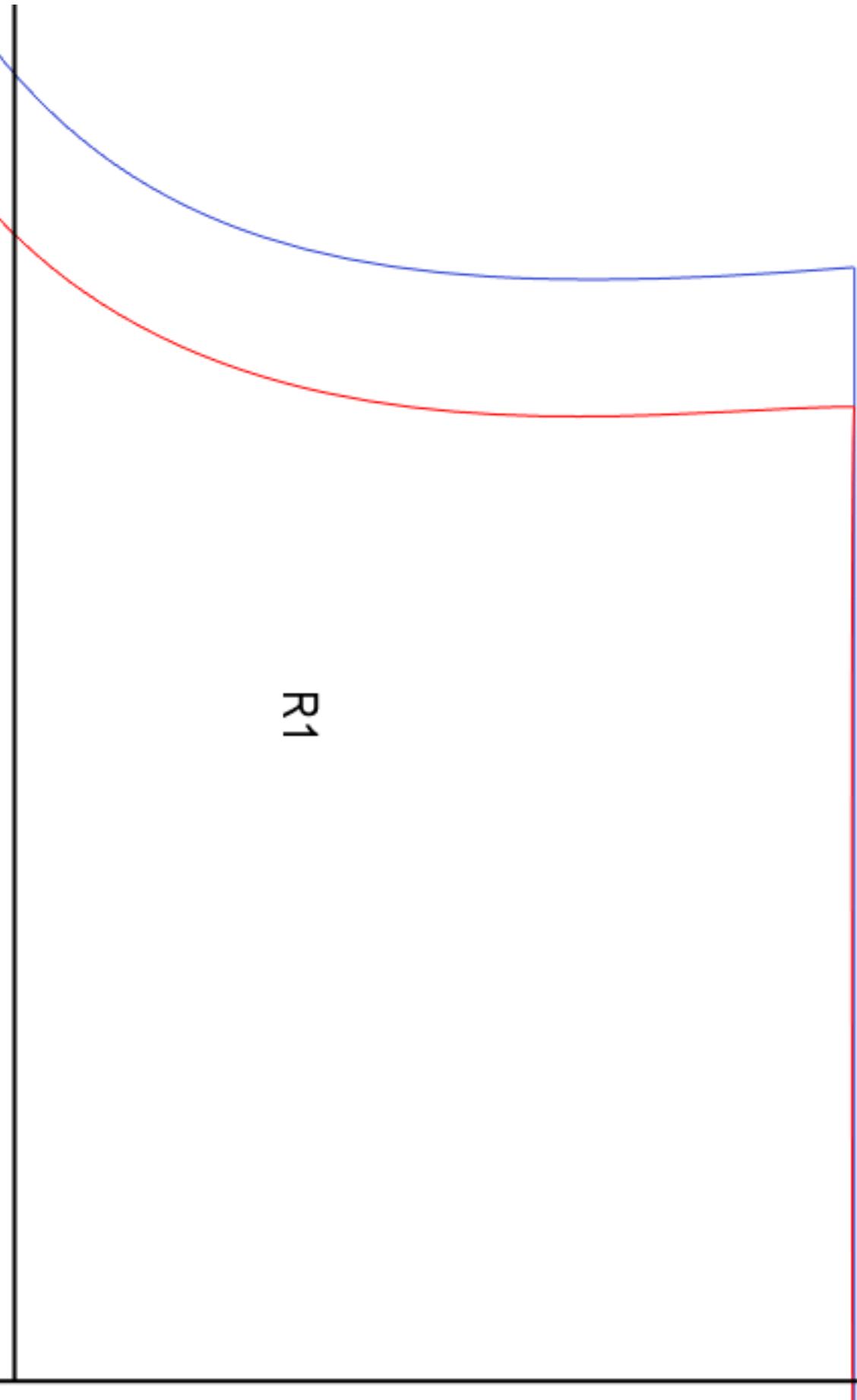
Rückwärtige Mitte  
Stoffbruch

The diagram shows a blue-outlined pattern piece for a garment, oriented vertically. At the top, there is a small rectangular section. A horizontal red line is drawn across the width of the piece, just below this top section. Below the red line, the text 'Rückwärtige Mitte' and 'Stoffbruch' is written. The main body of the pattern piece is a long, curved shape that tapers towards the bottom. The word 'Kragen' is written vertically in the center of this main body.

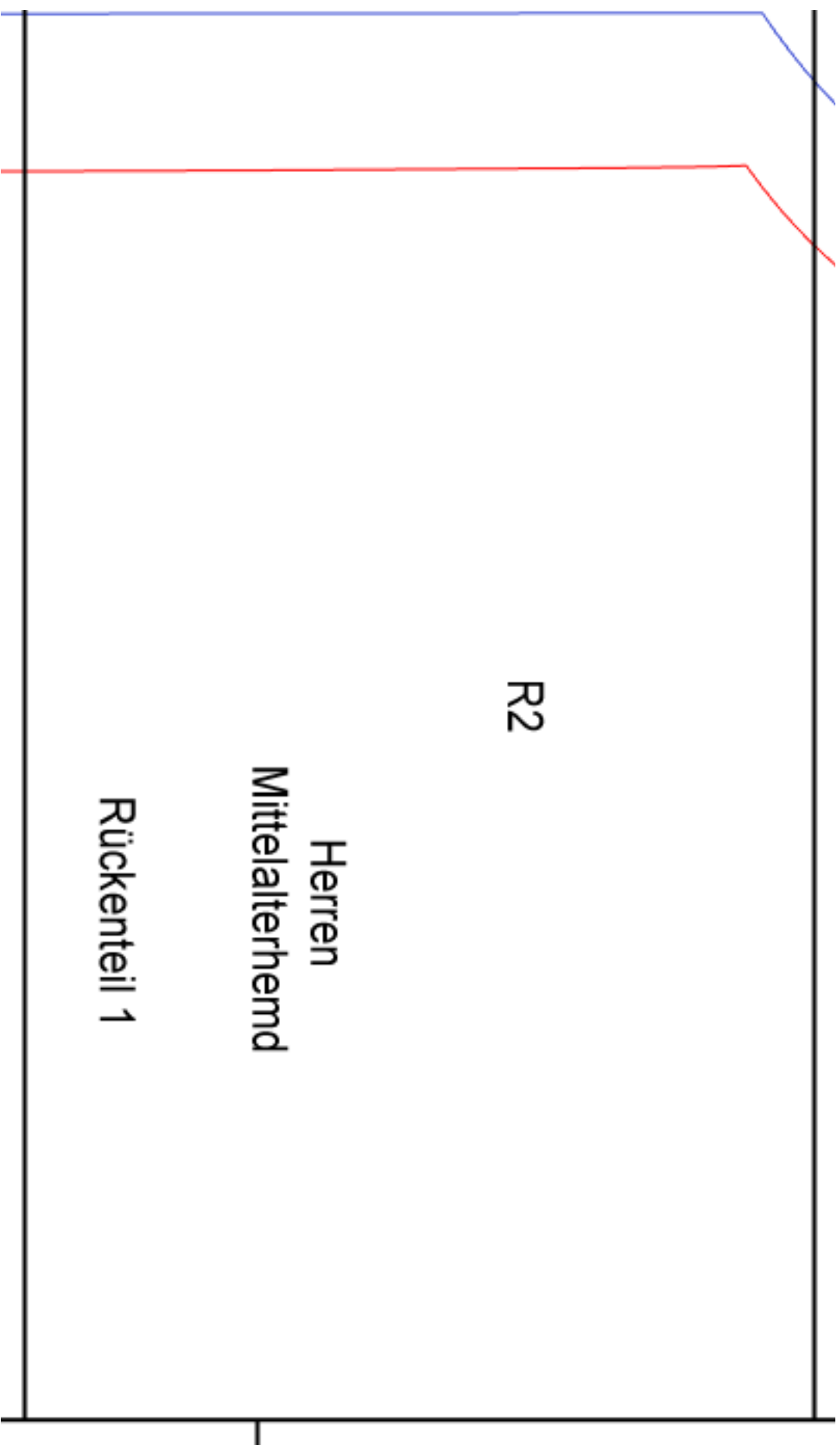
Kragen

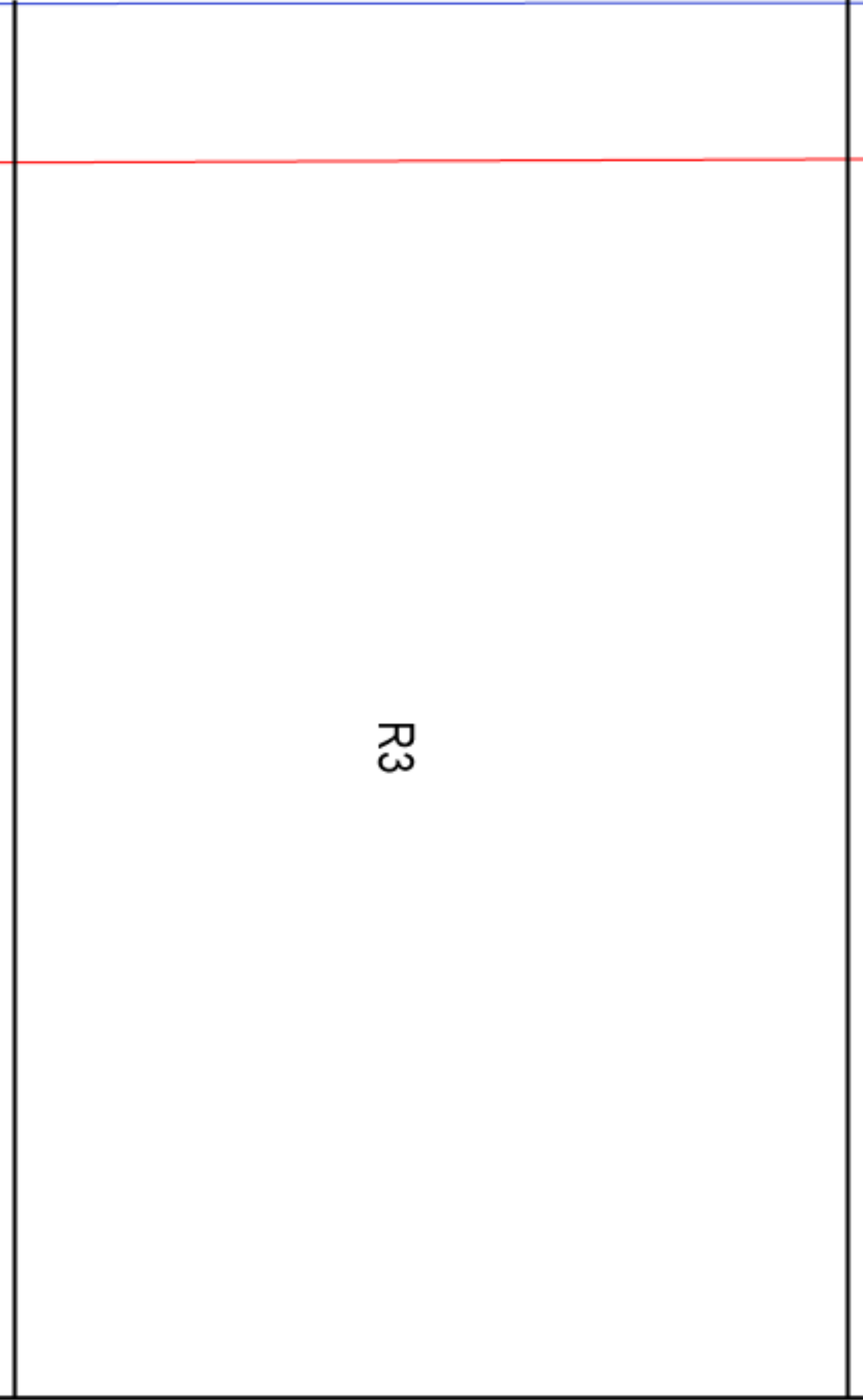


Ärmelbündchen - Manschette

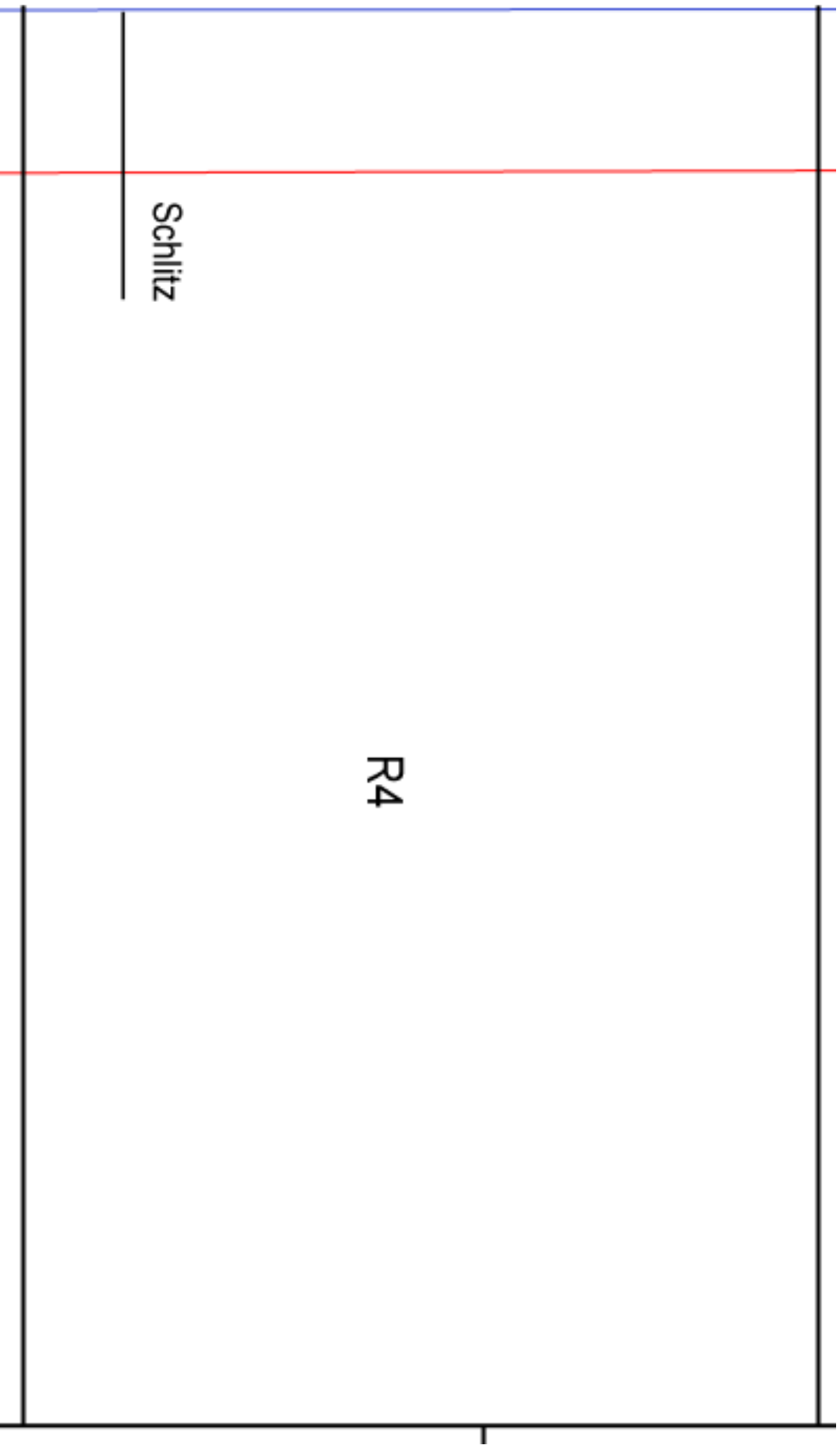


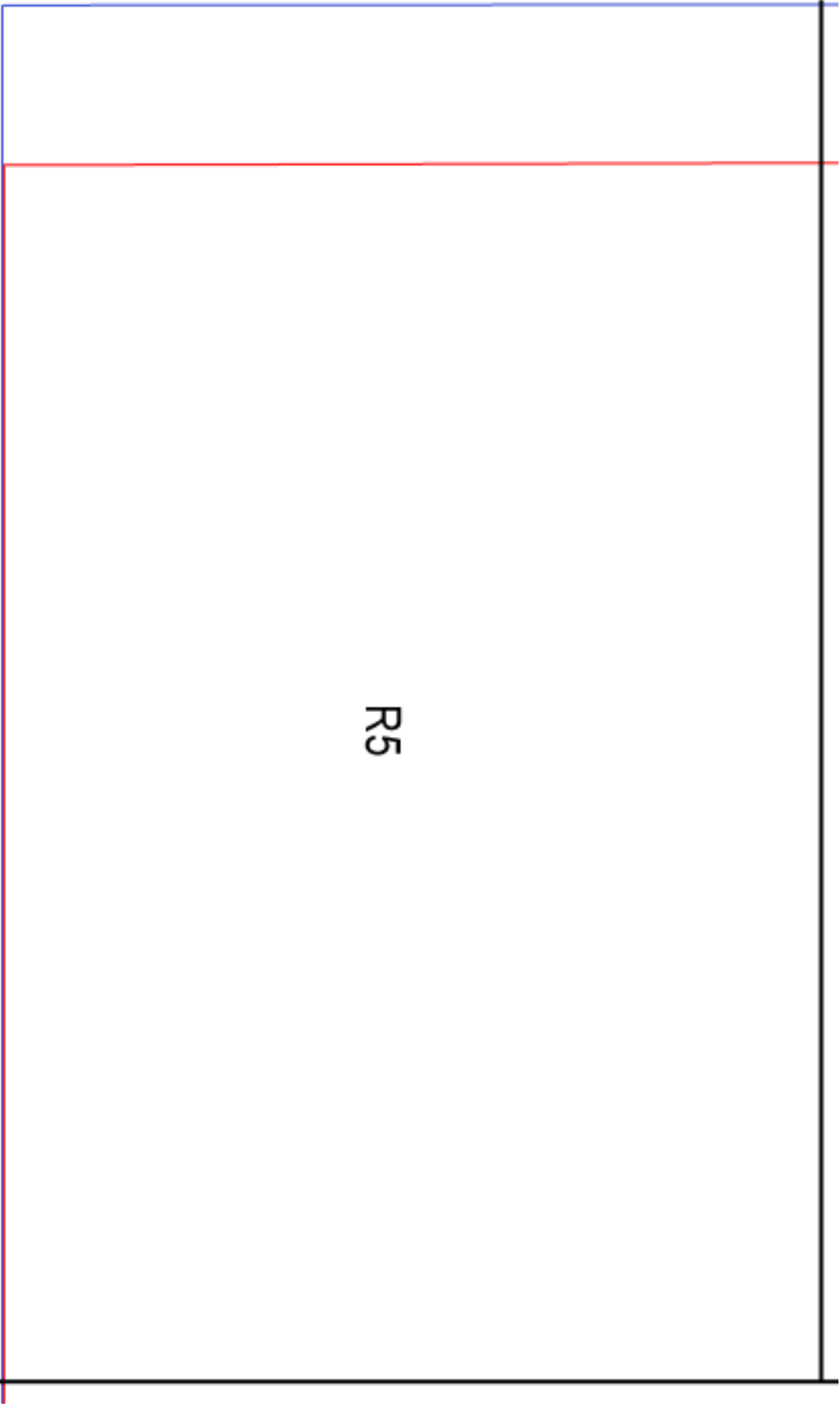
R1

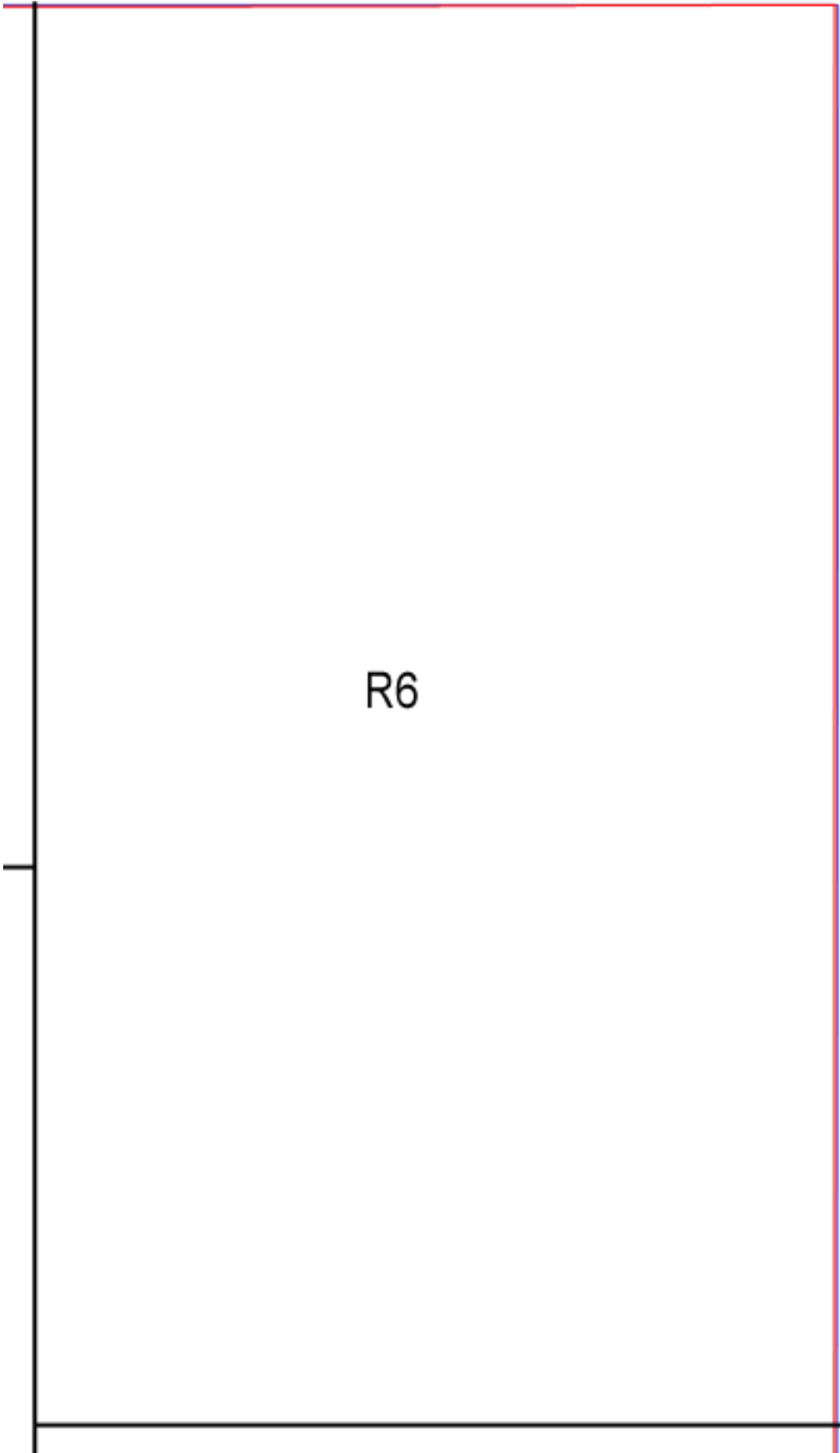




R3



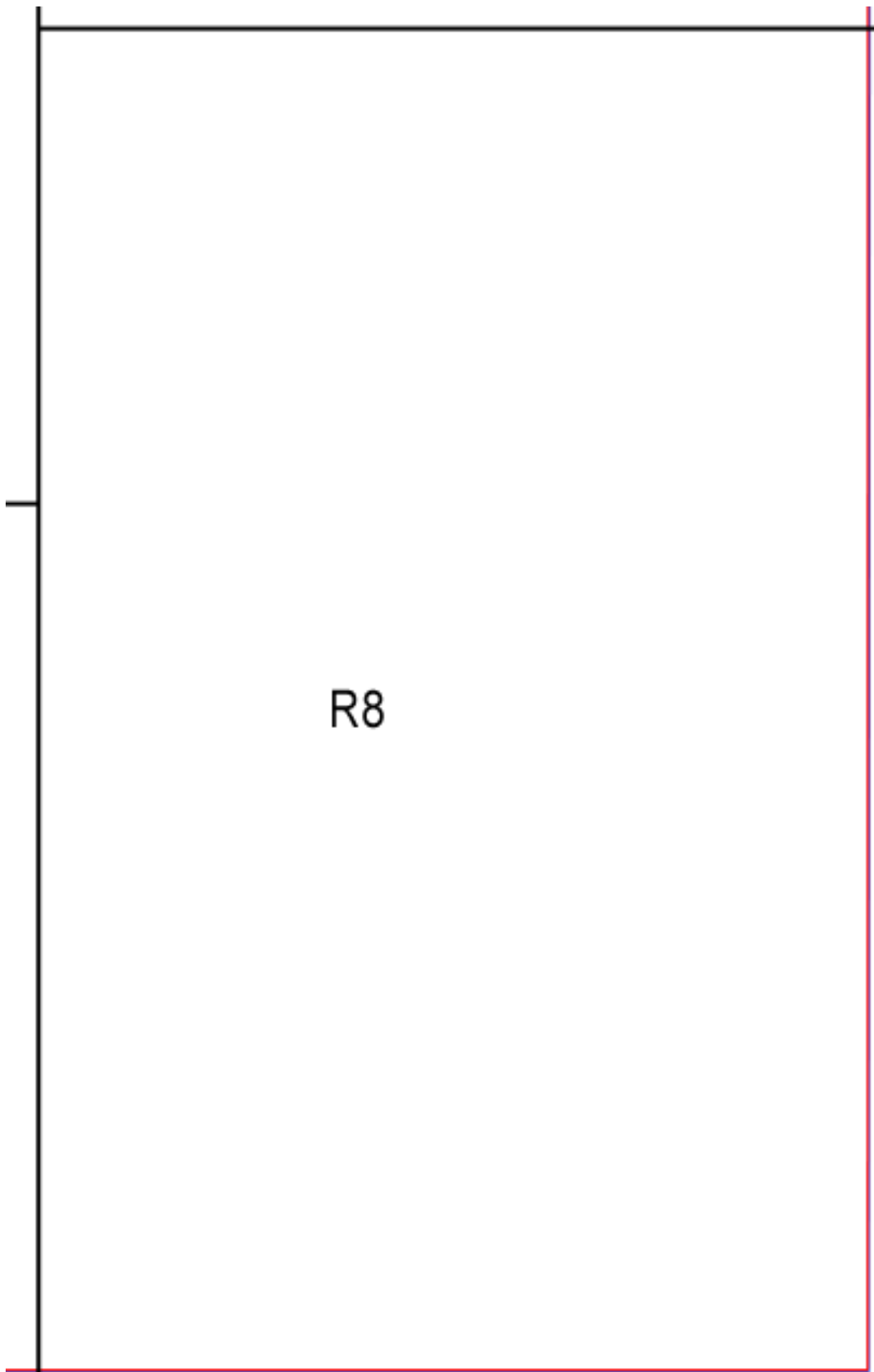


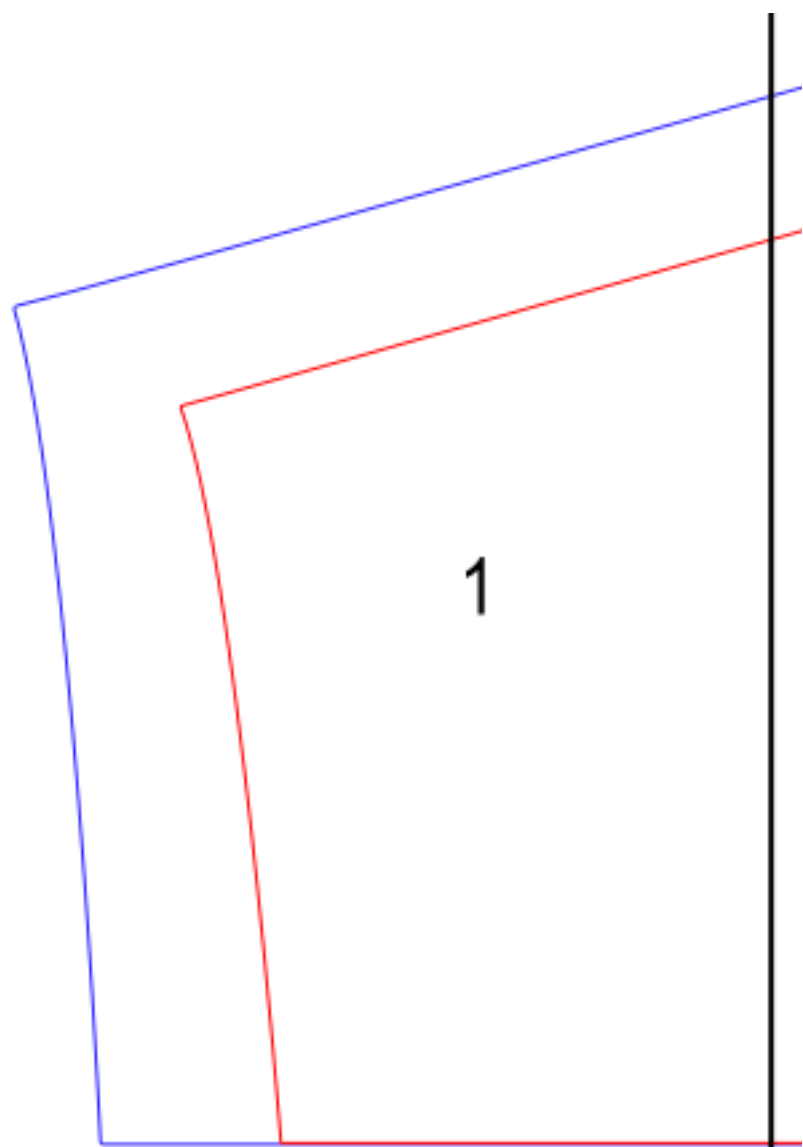


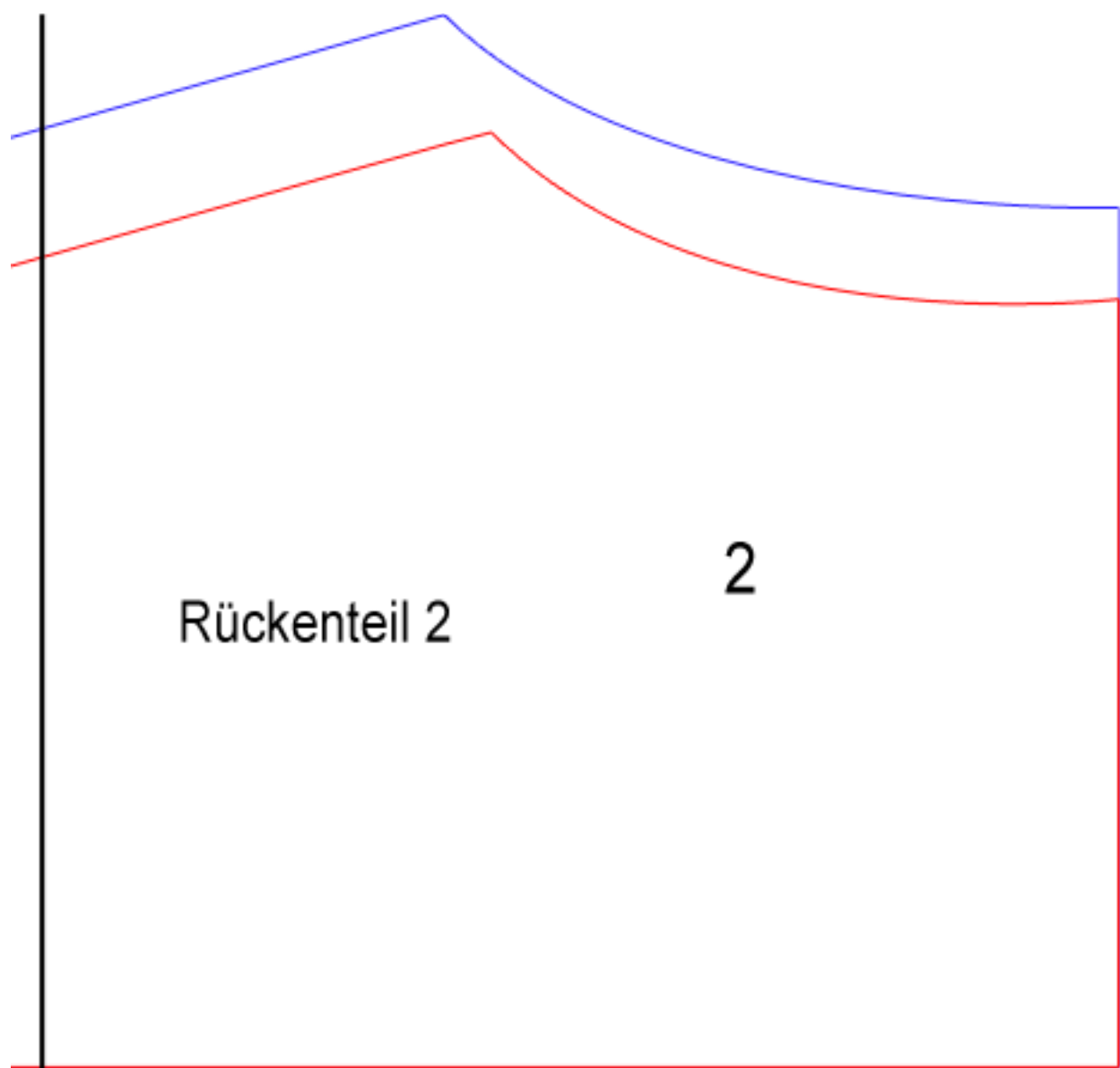
R7

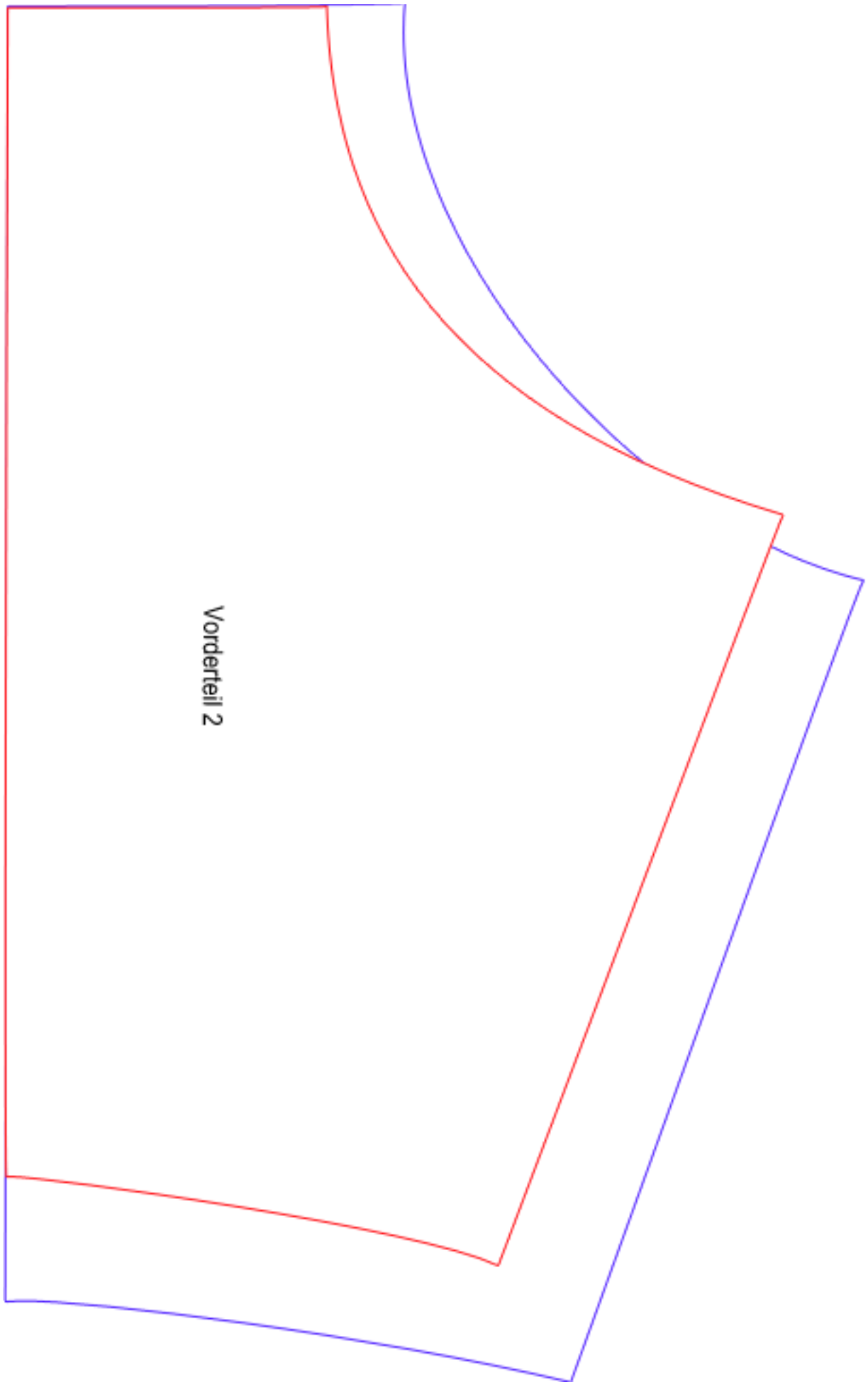
Rückwärtige Mitte Stoffbruch







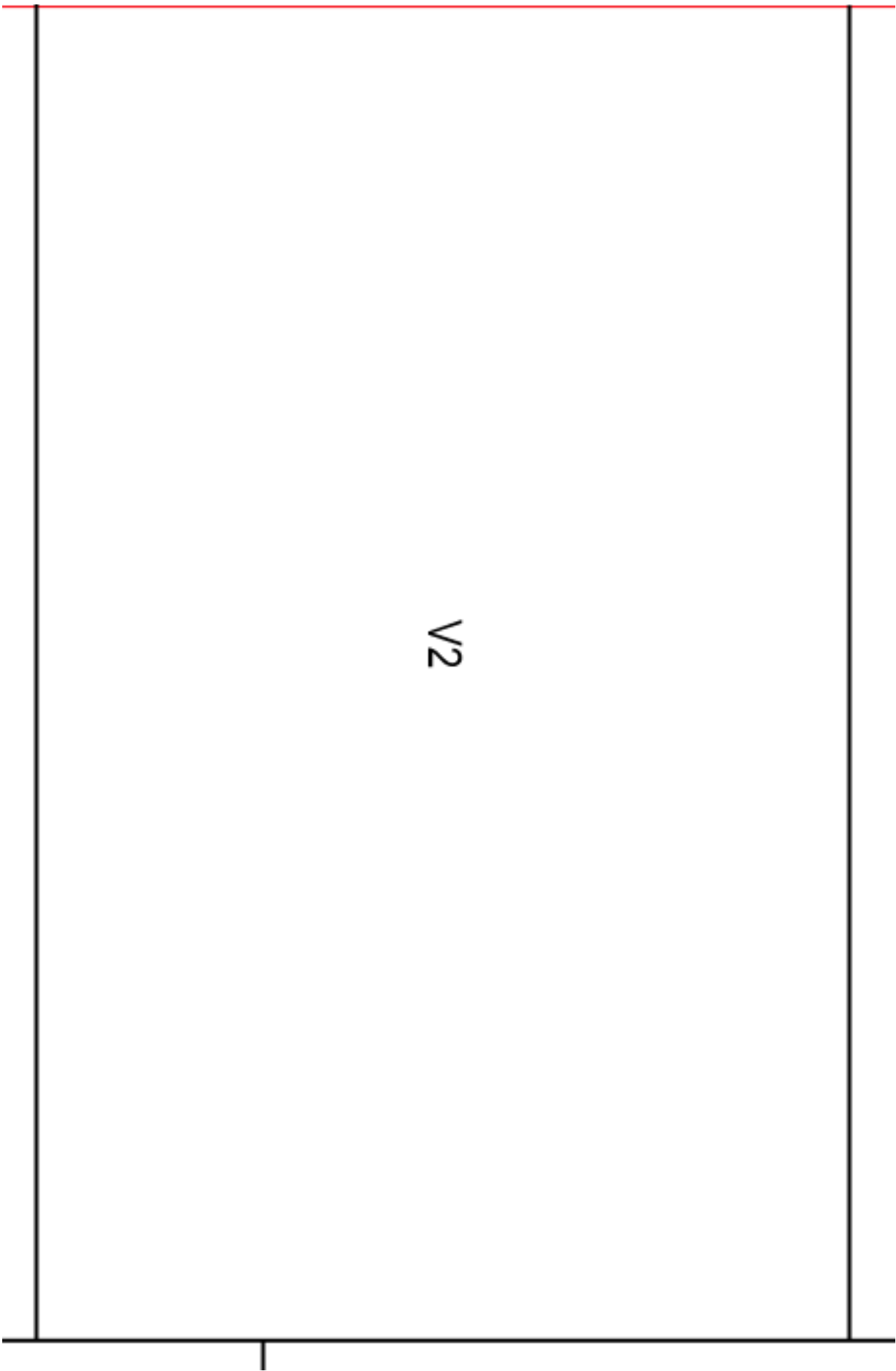




Vorderteil 2



V1



Herren

Mittelalterhemd

Vorderteil 1

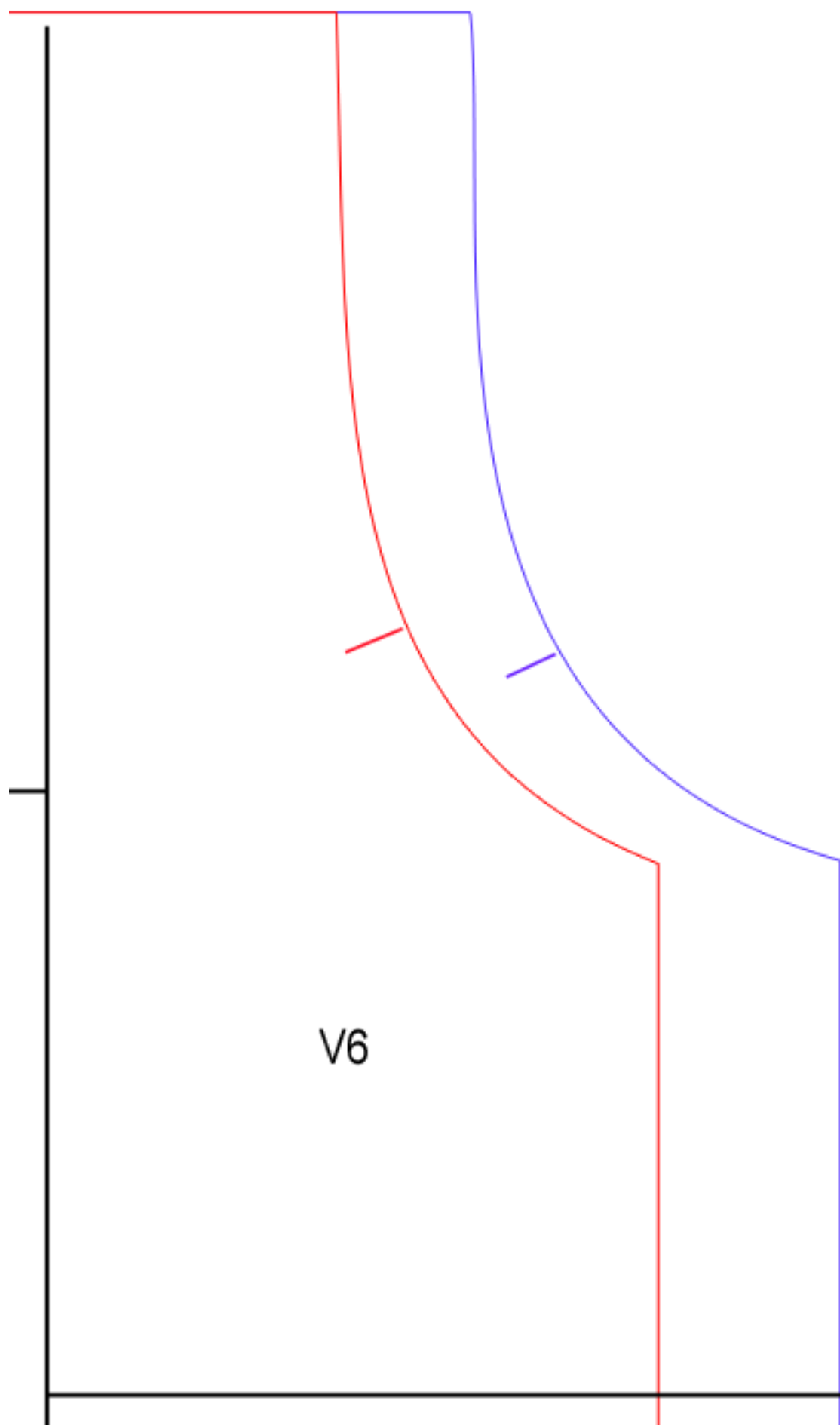
V3

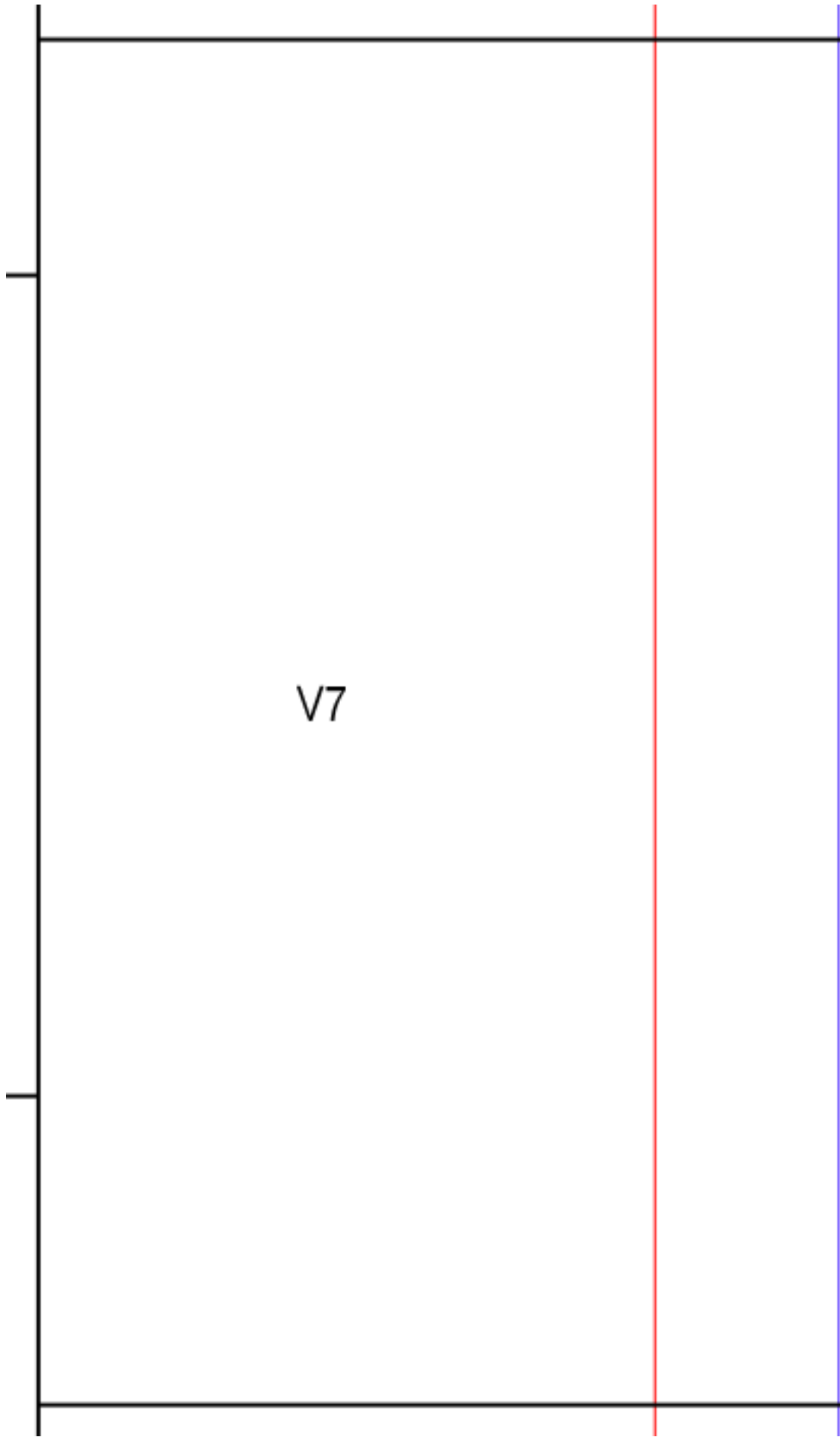
Vordere Mitte - Stoffbruch

V4



V5





V7

