

Verflixt und Zugenäht

Kleidung nähen und mehr ... www.schneidern-naehen.de

Schnittmuster für einen langen Rock mit Keilen Größe S, M, L und XL

Die passende Nähanleitung gibt es unter:
<http://www.schneidern-naehen.de/rock-naehen>

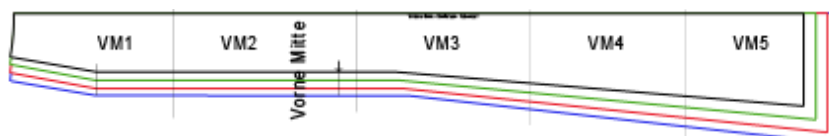
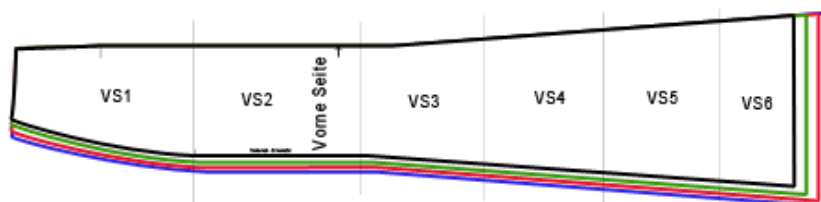
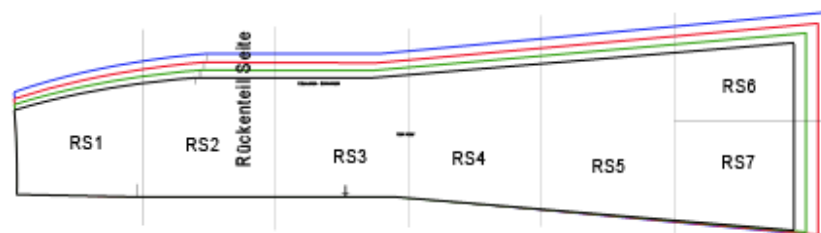
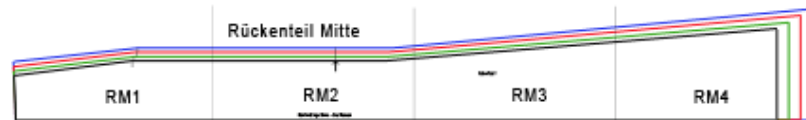
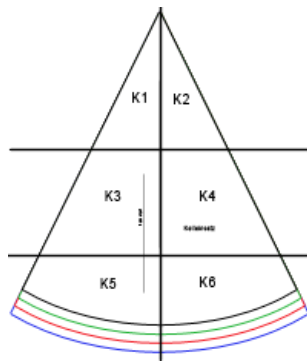
Blätter / Schnitt-Teile an den Linien zusammenkleben. Linien treffen aufeinander.

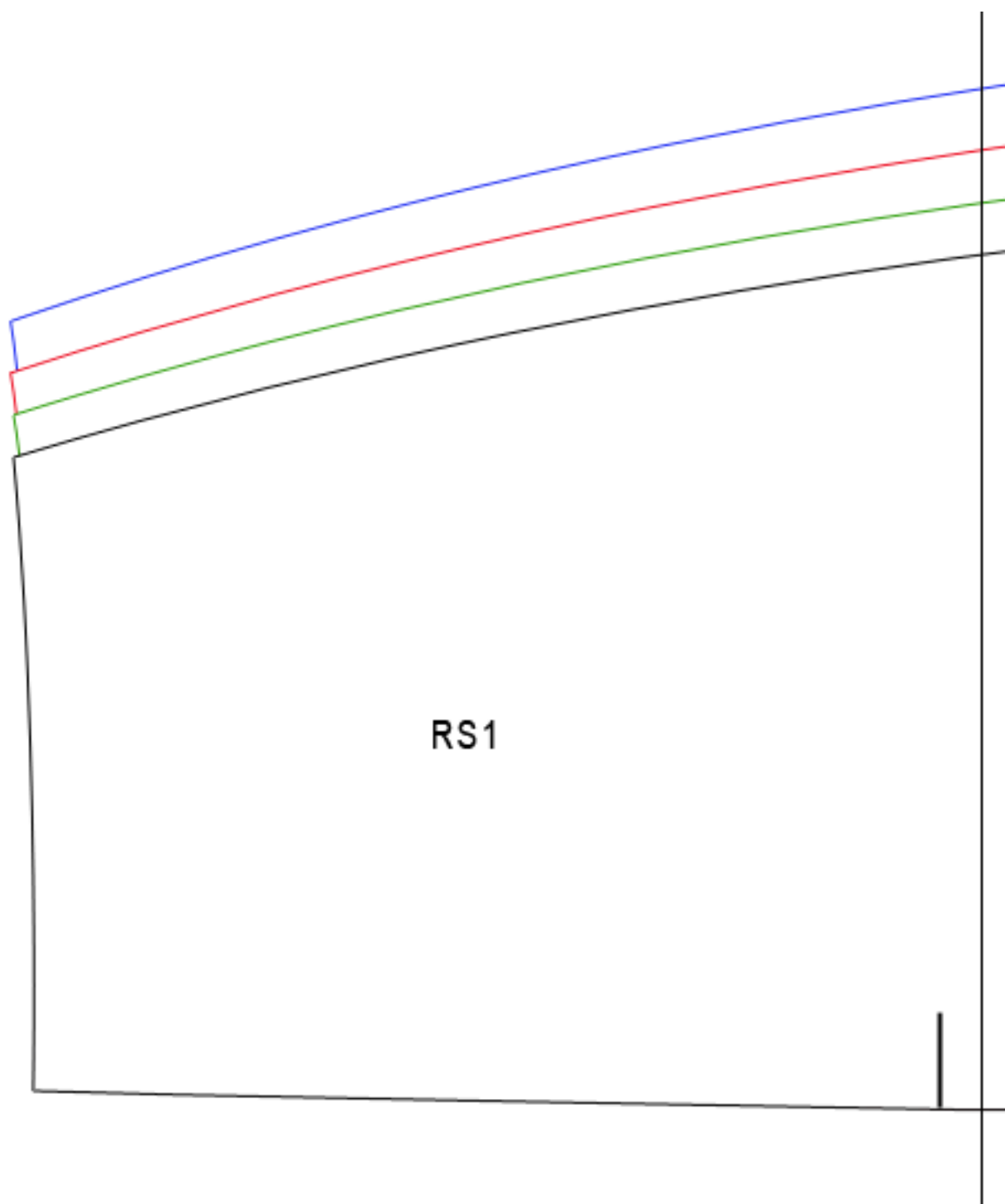
Größen

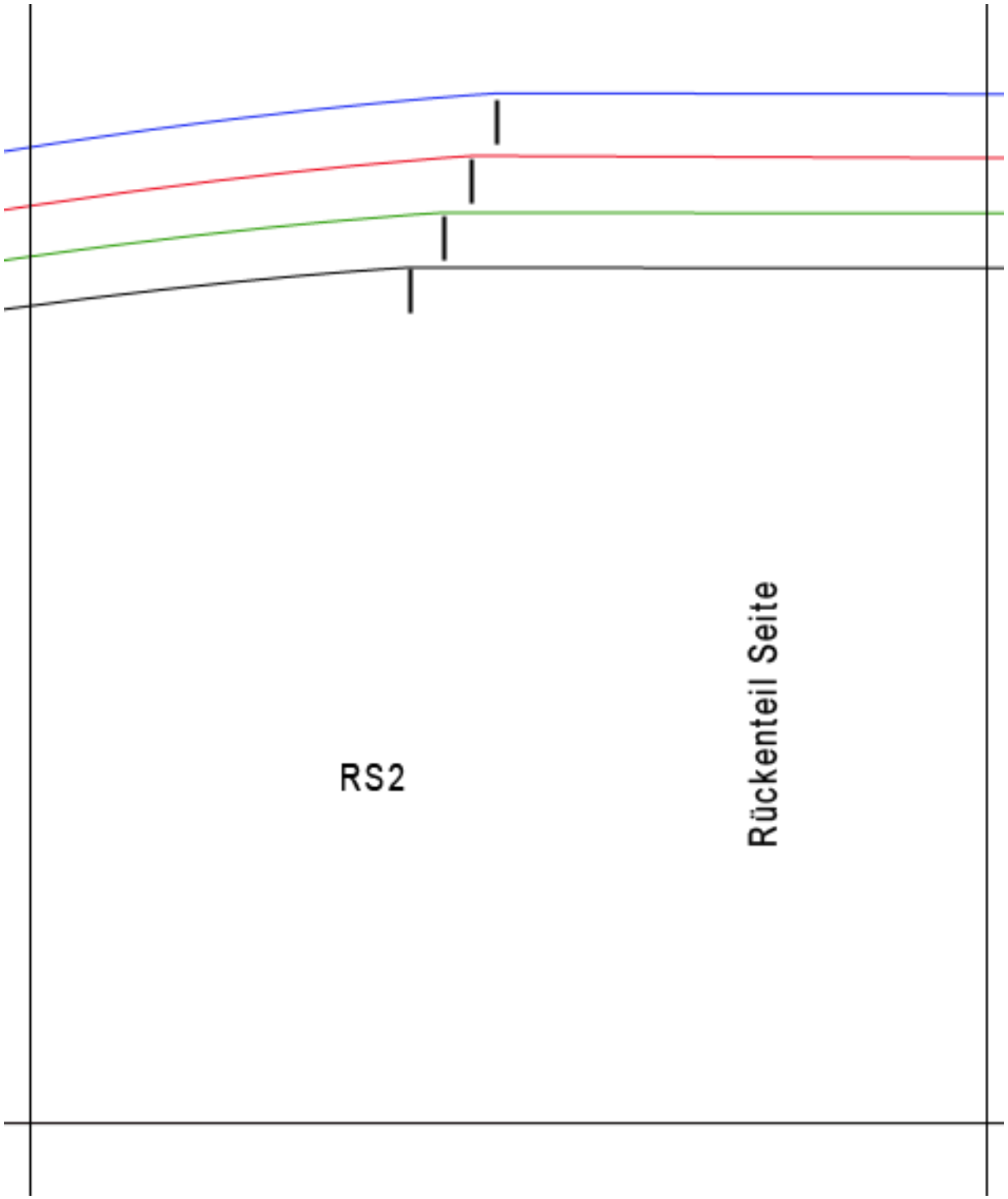
- Schwarz = S
- Grün = M
- Rot = L
- Blau = XL



Schnittübersicht

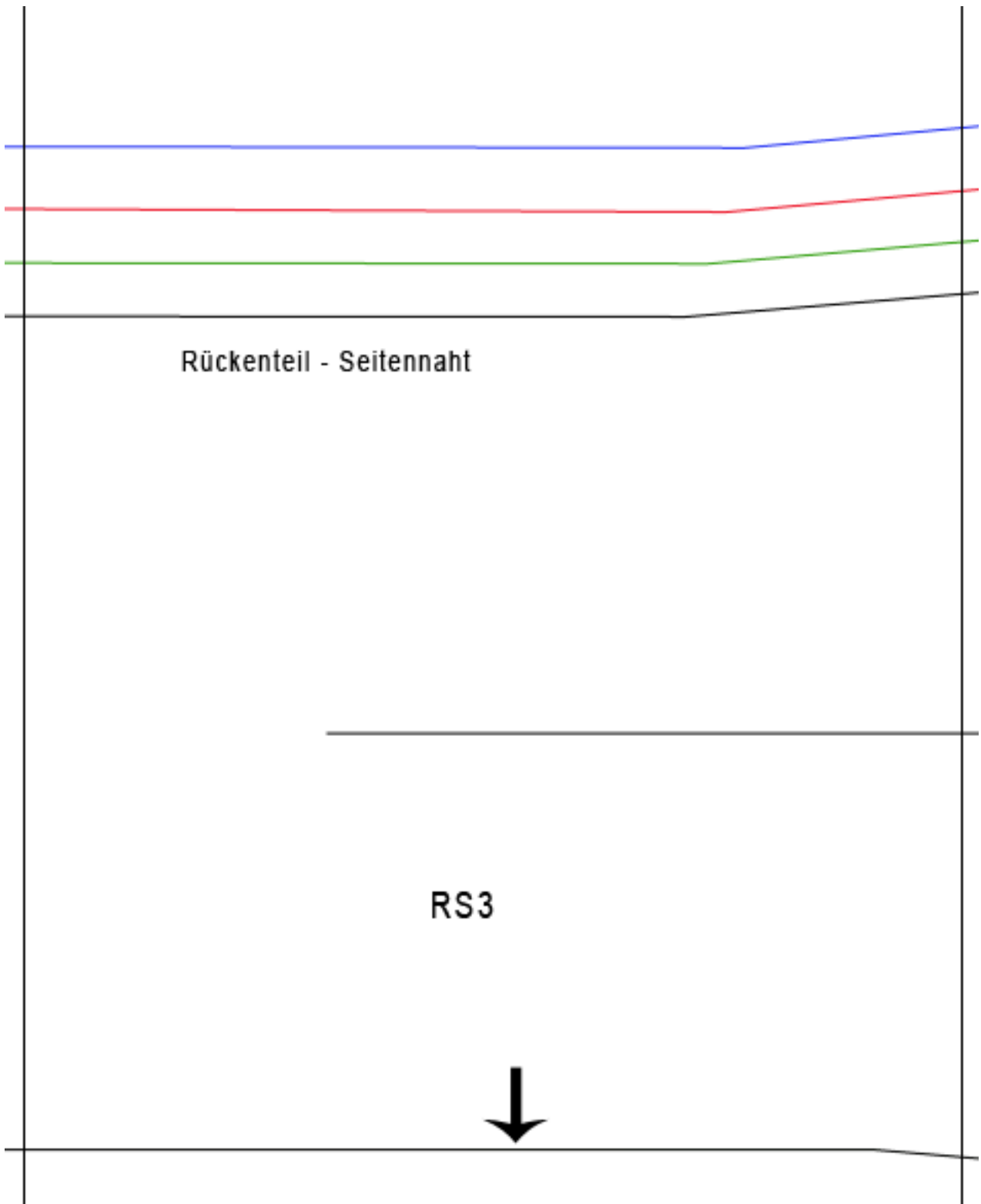


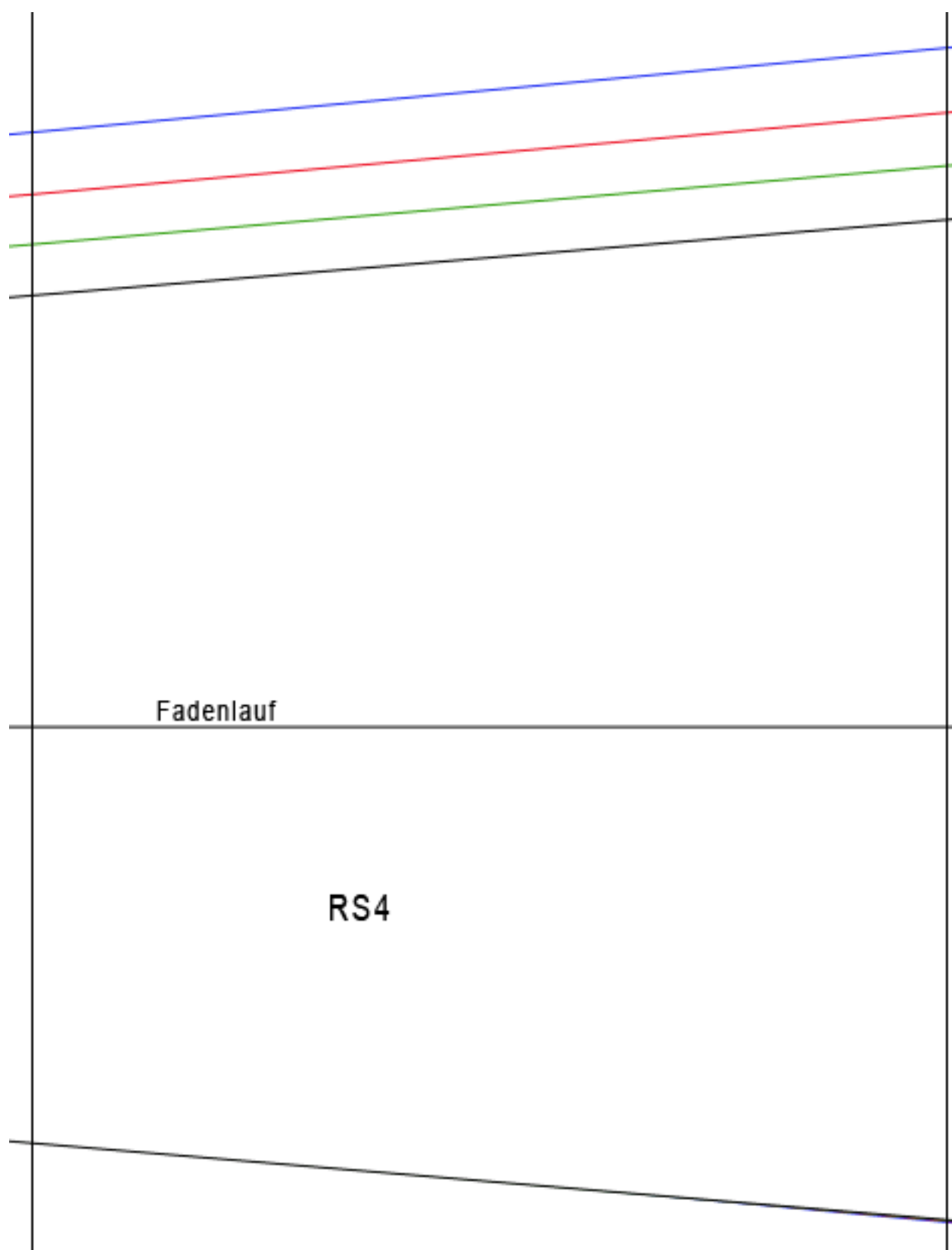


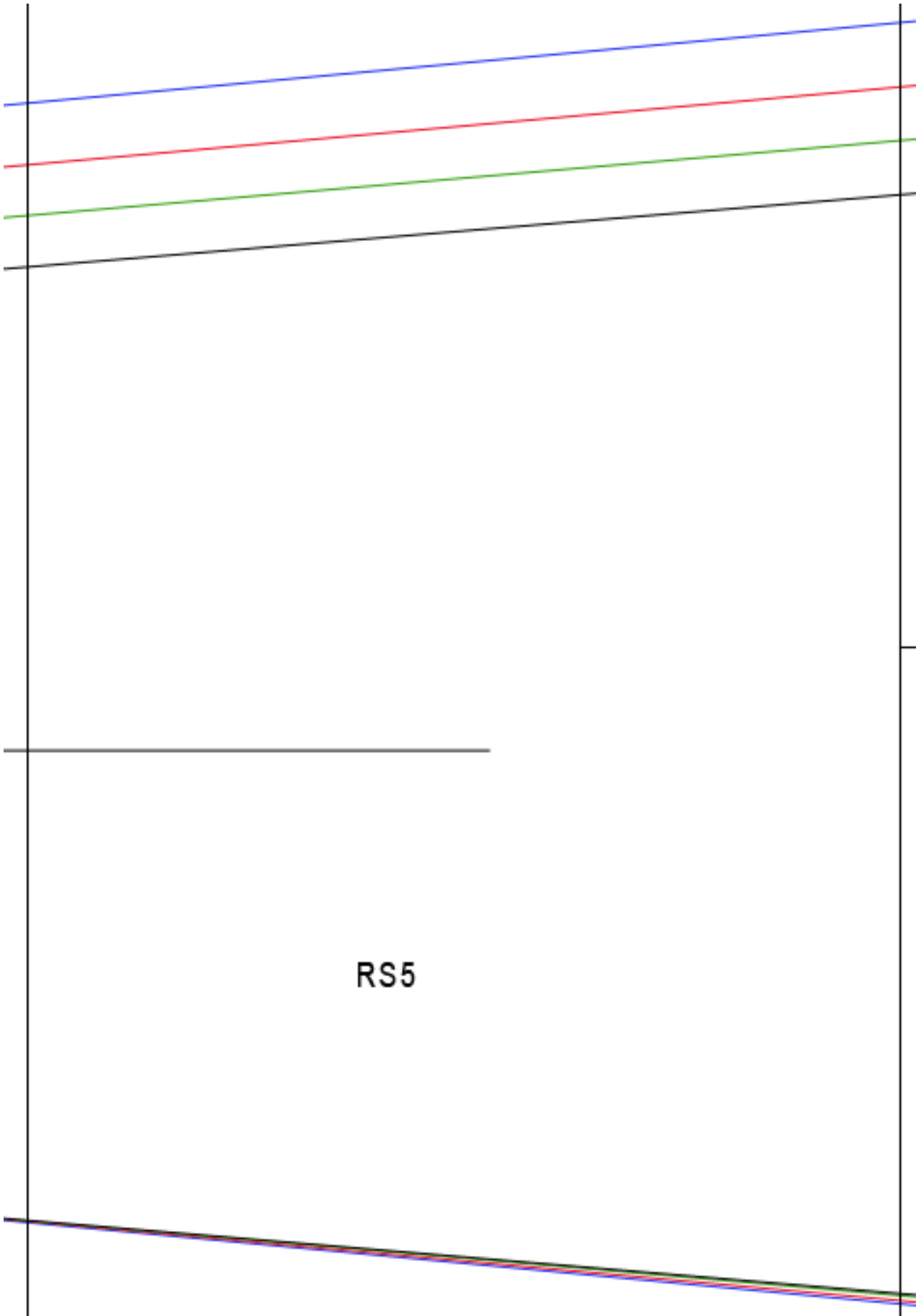


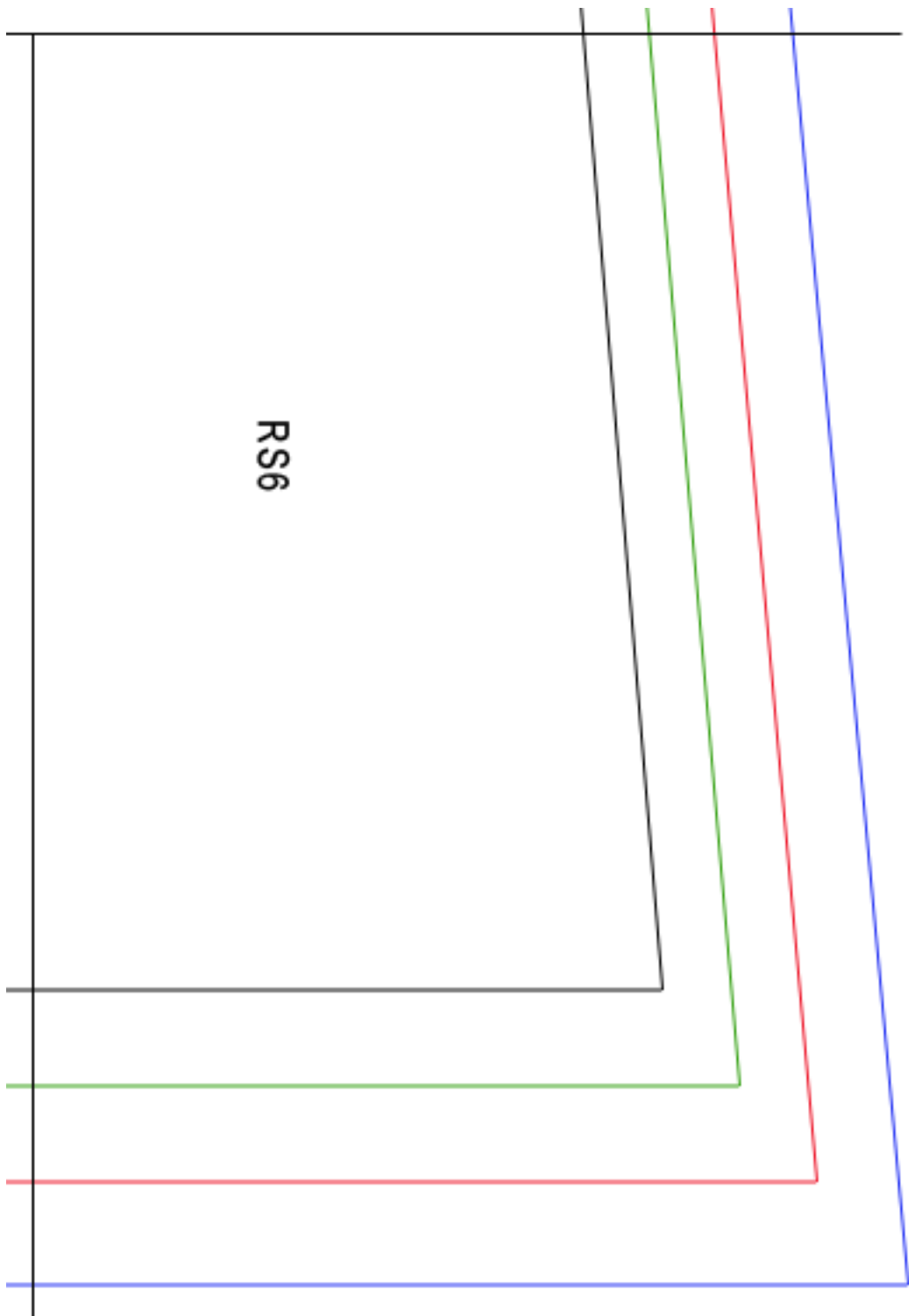
RS2

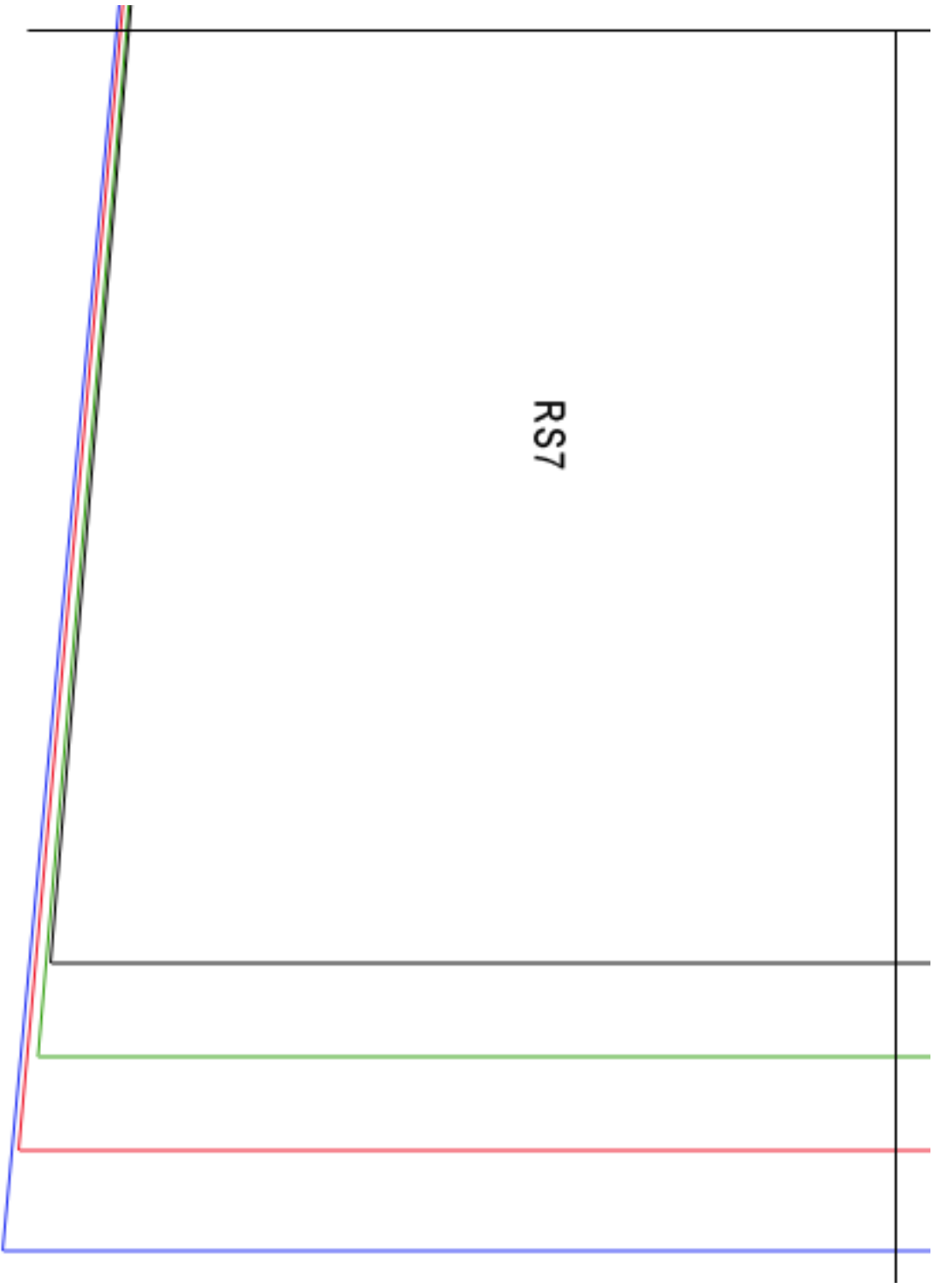
Rückenteil Seite

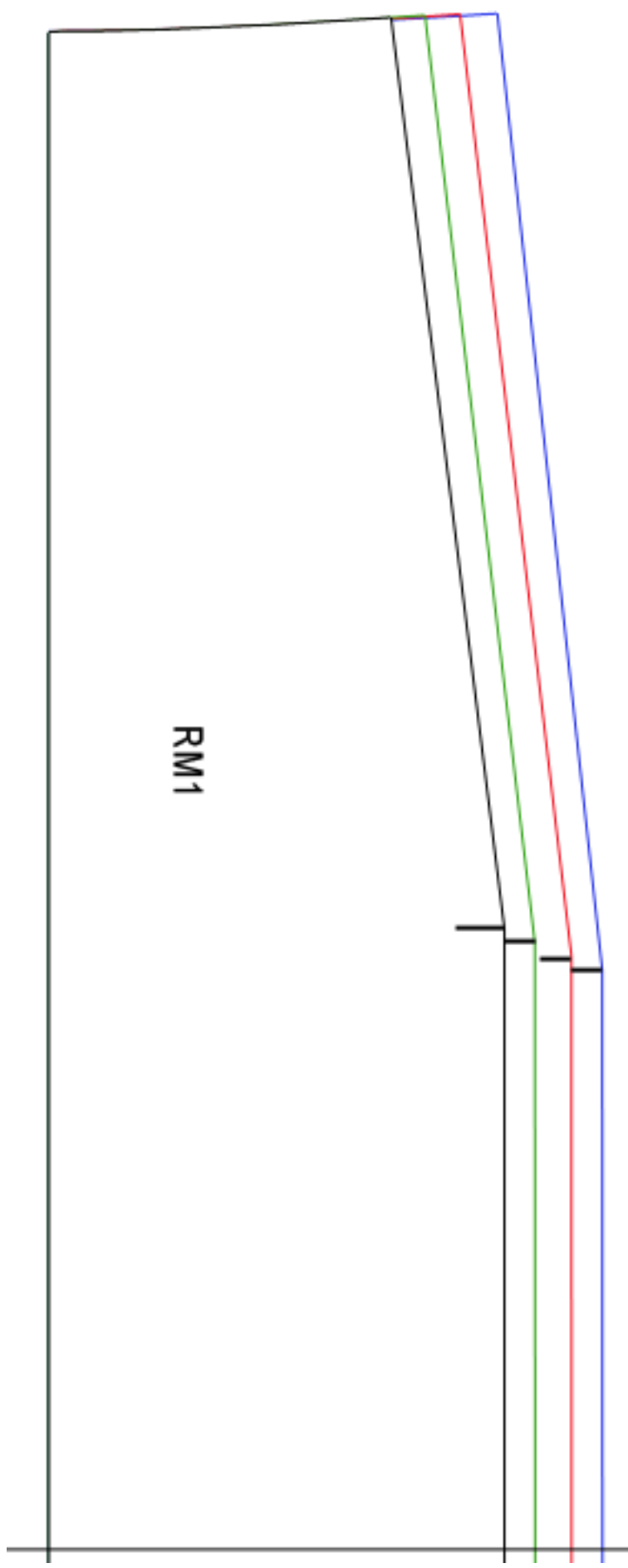


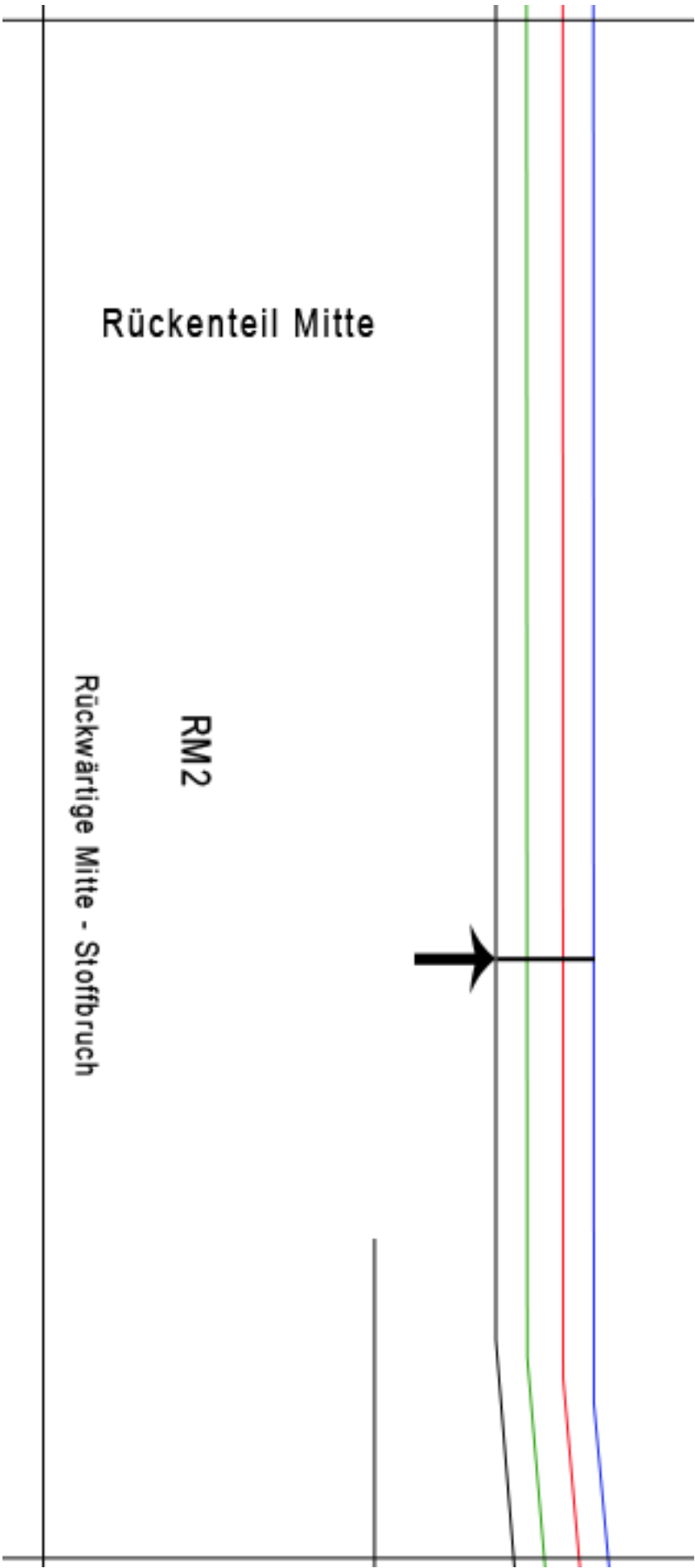


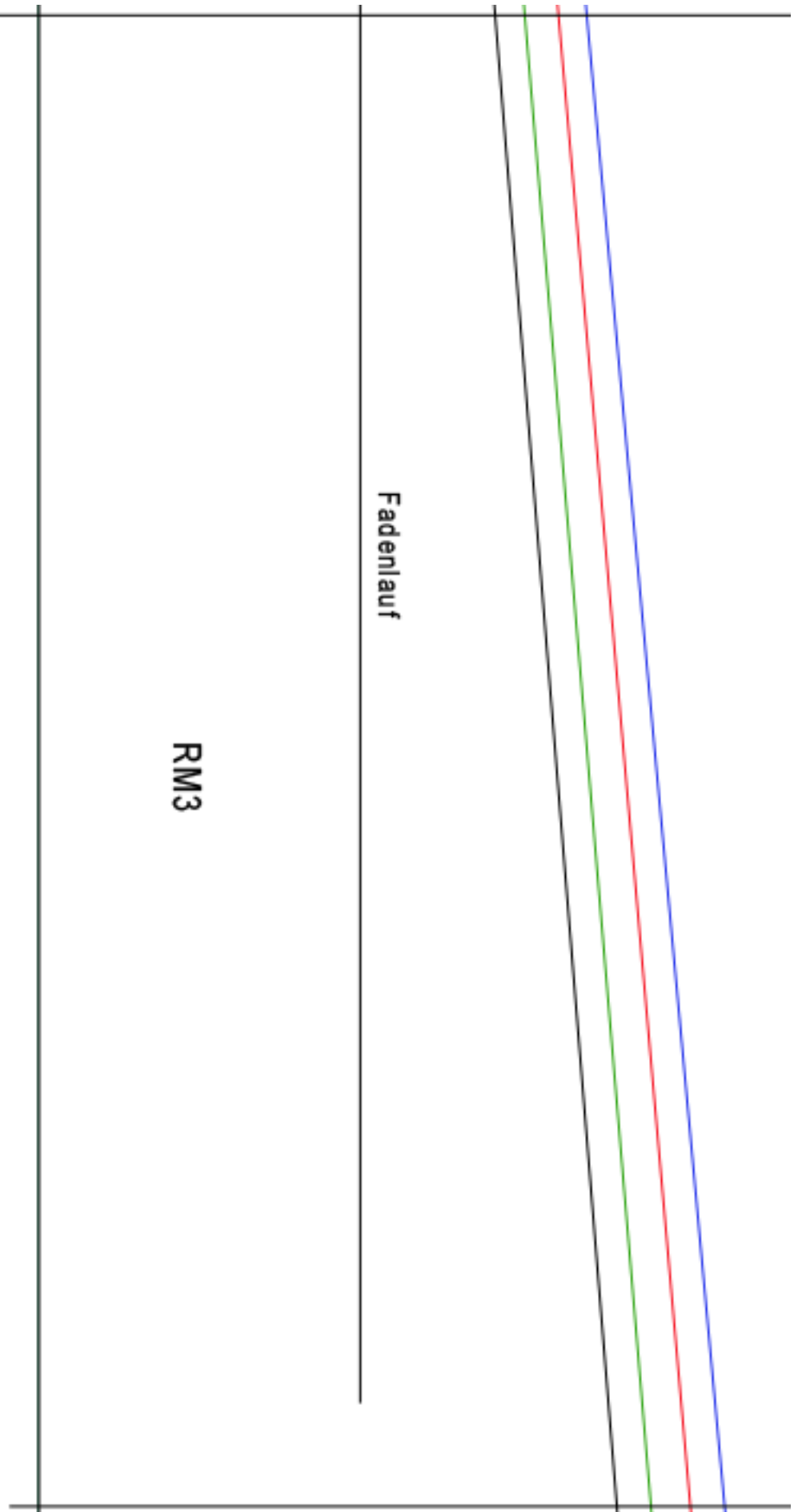


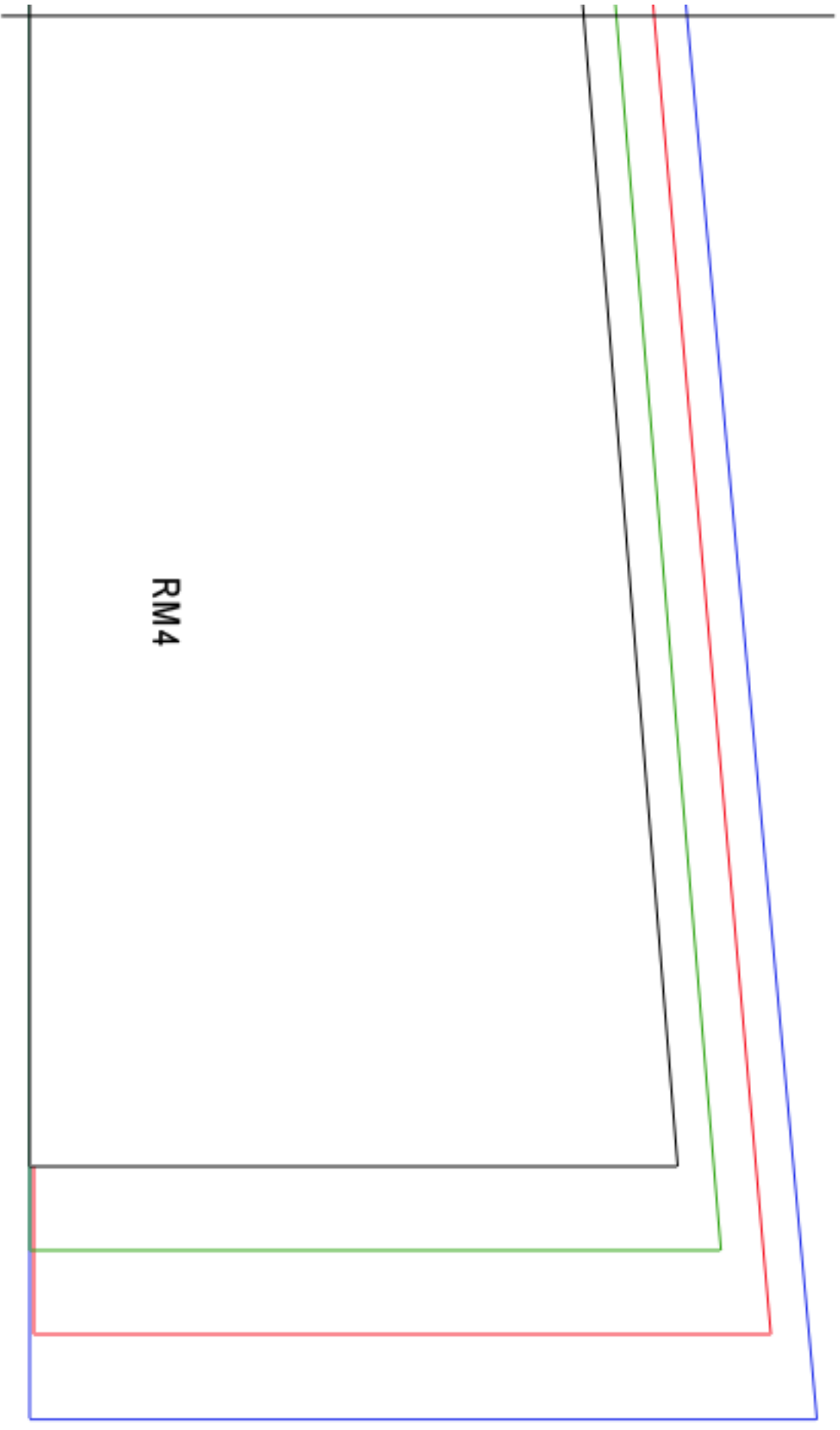




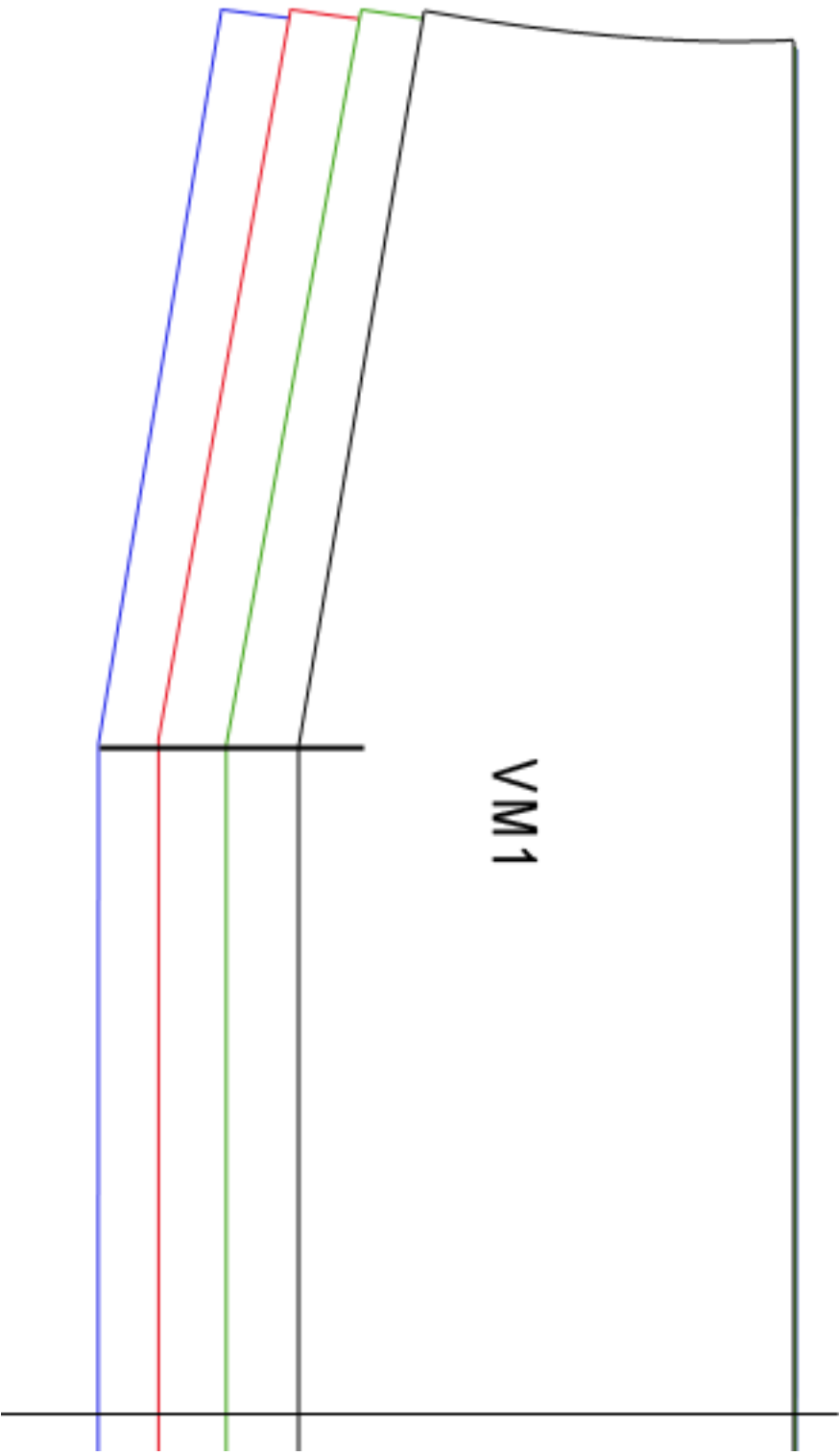


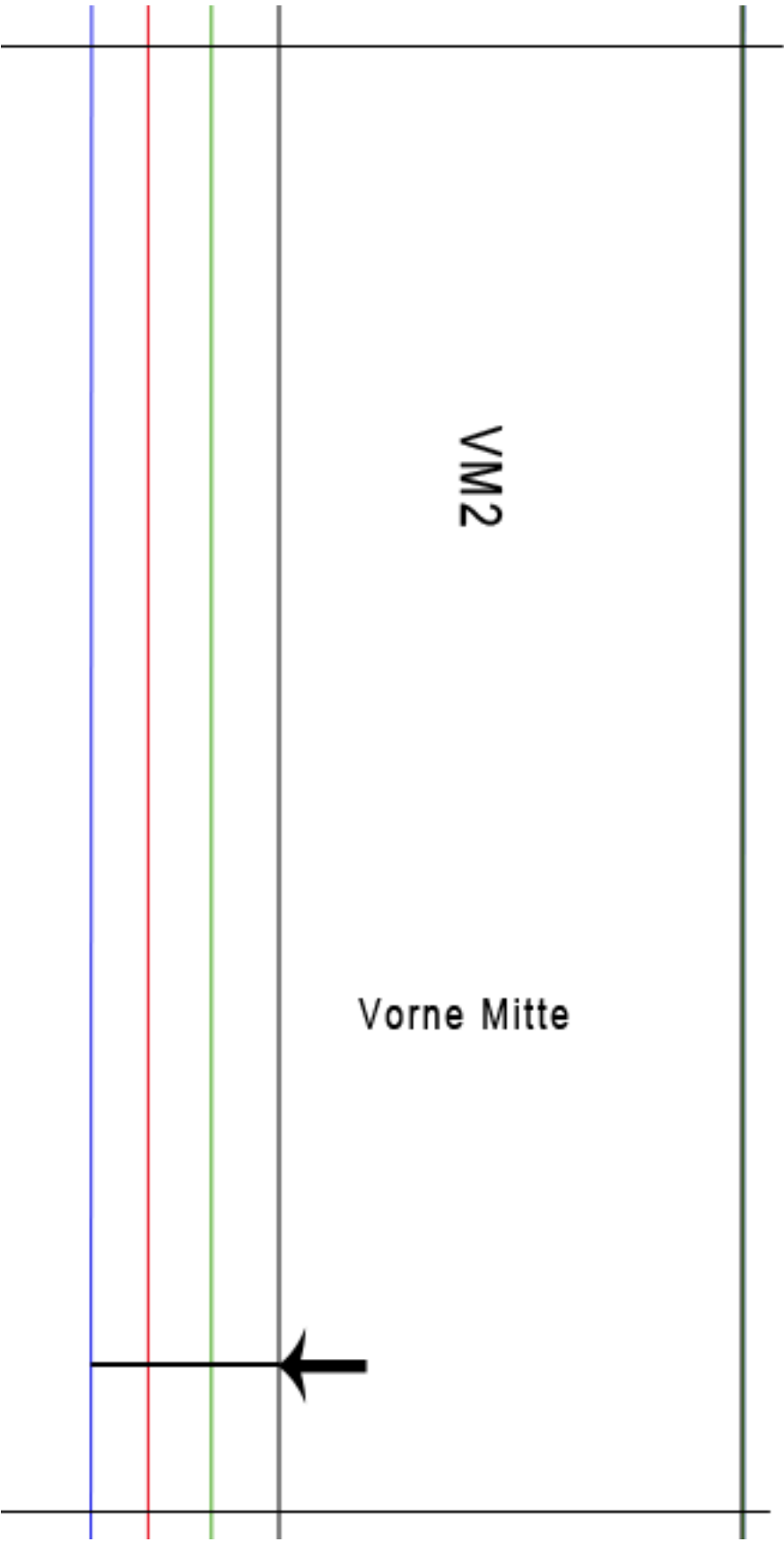






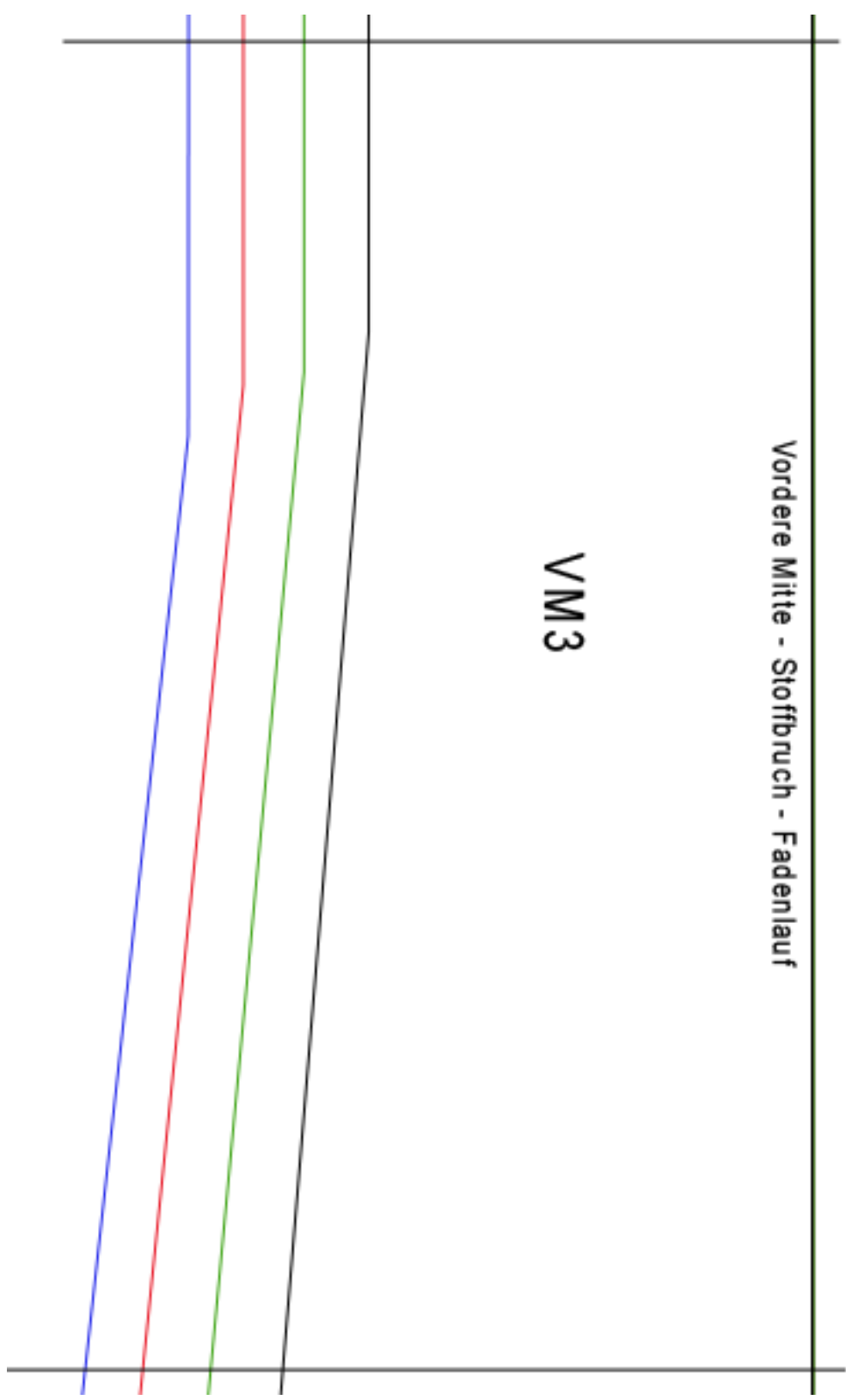
RM4

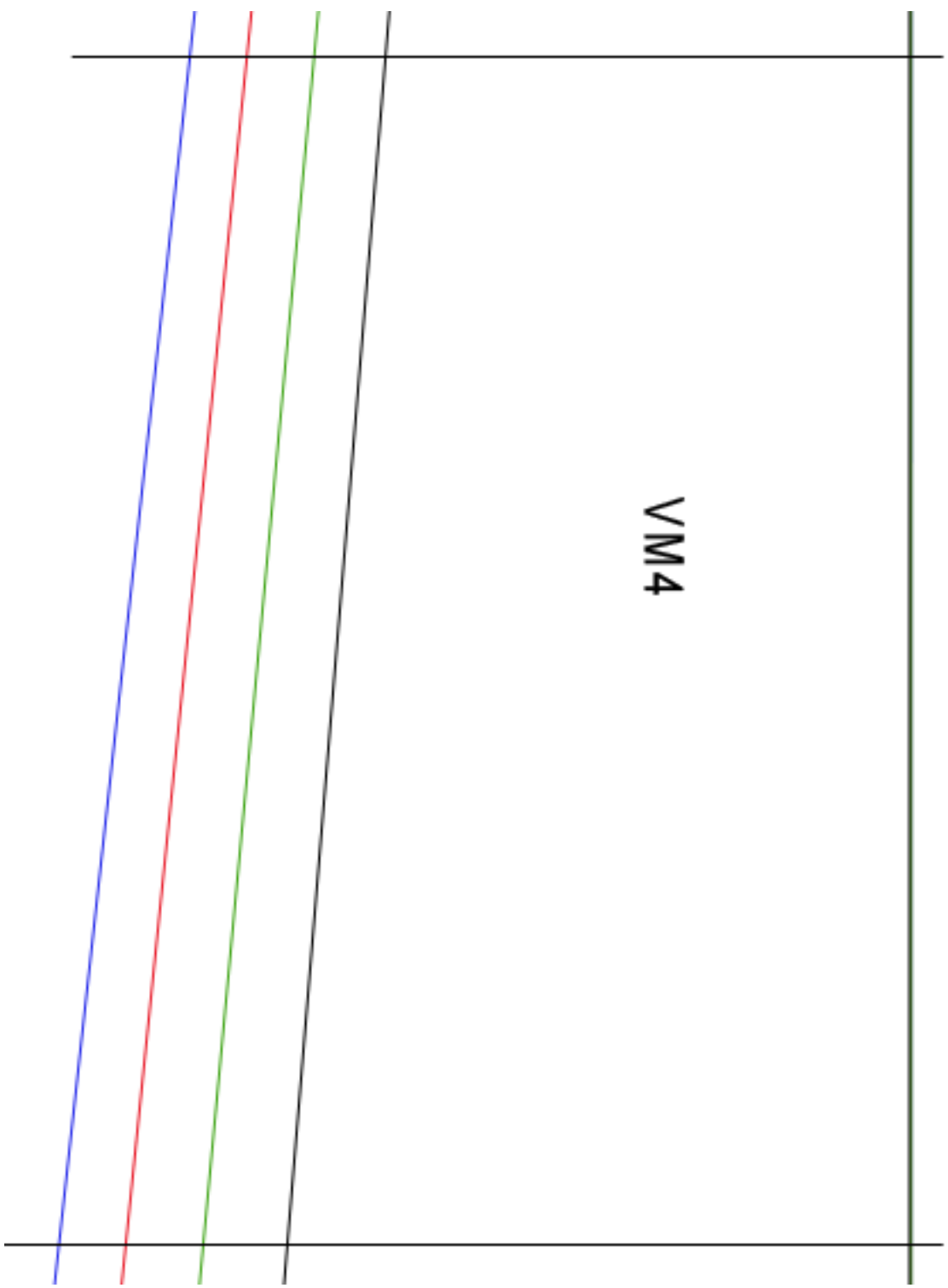


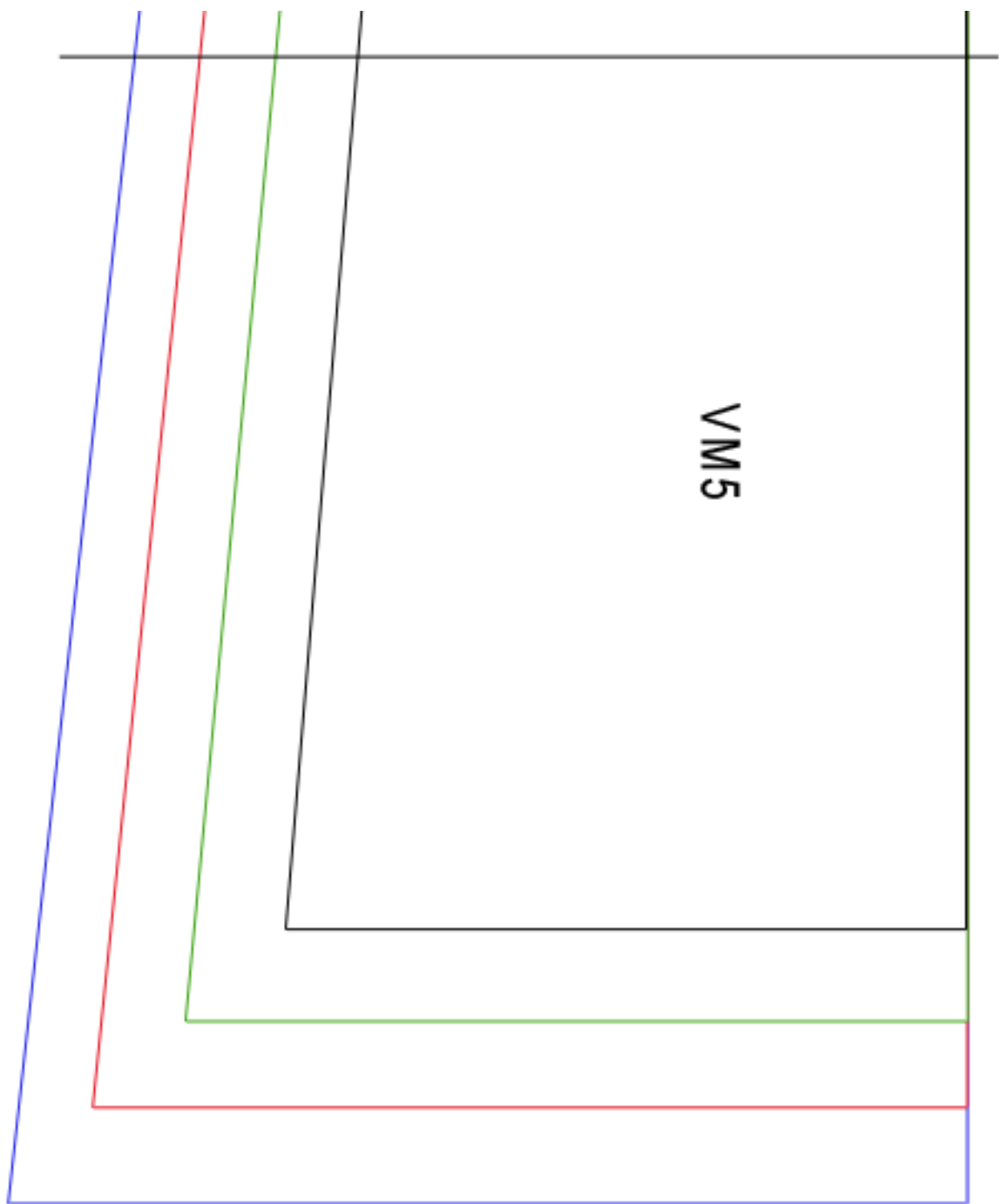


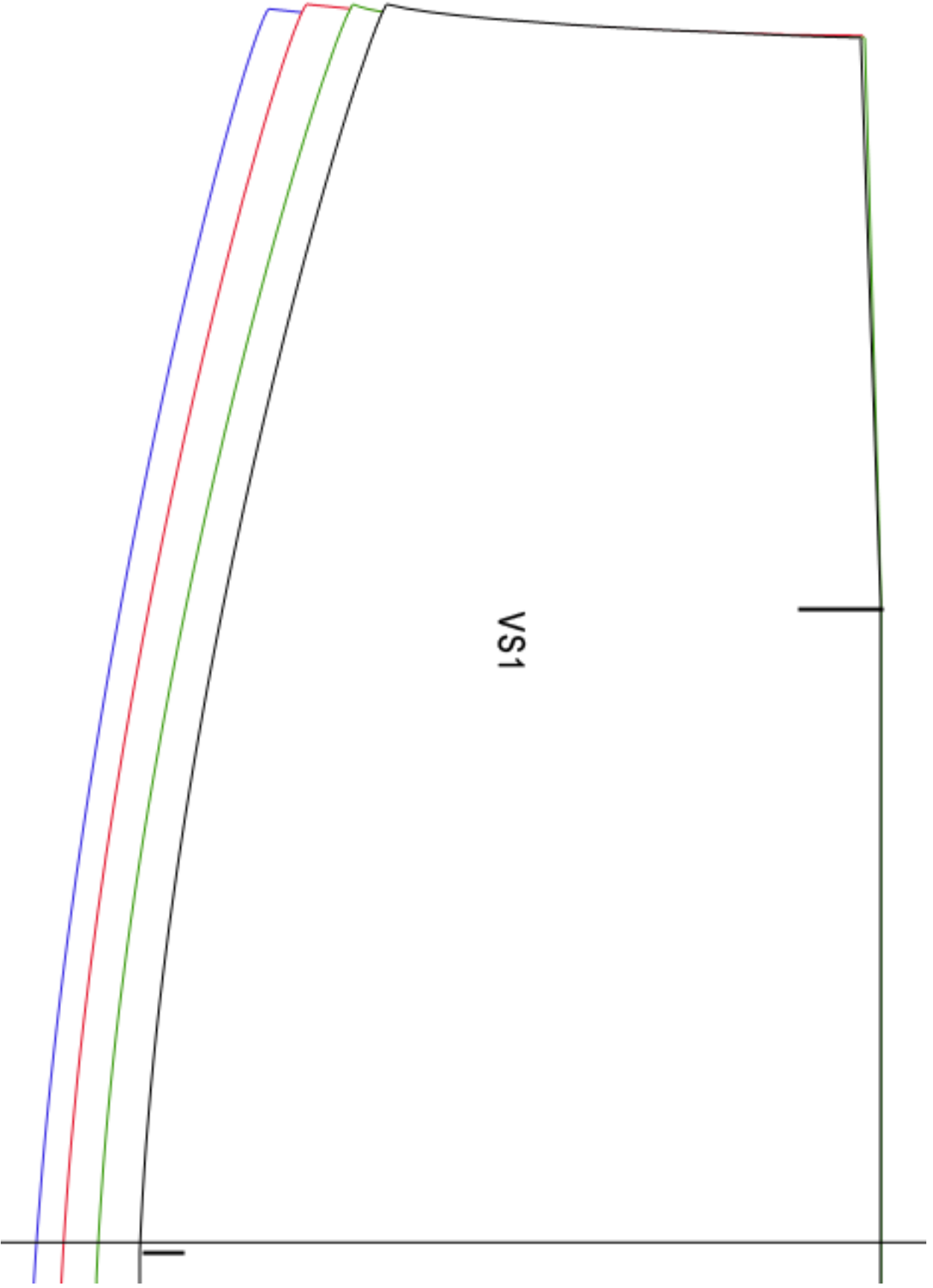
Vordere Mitte - Stoffbruch - Fadenlauf

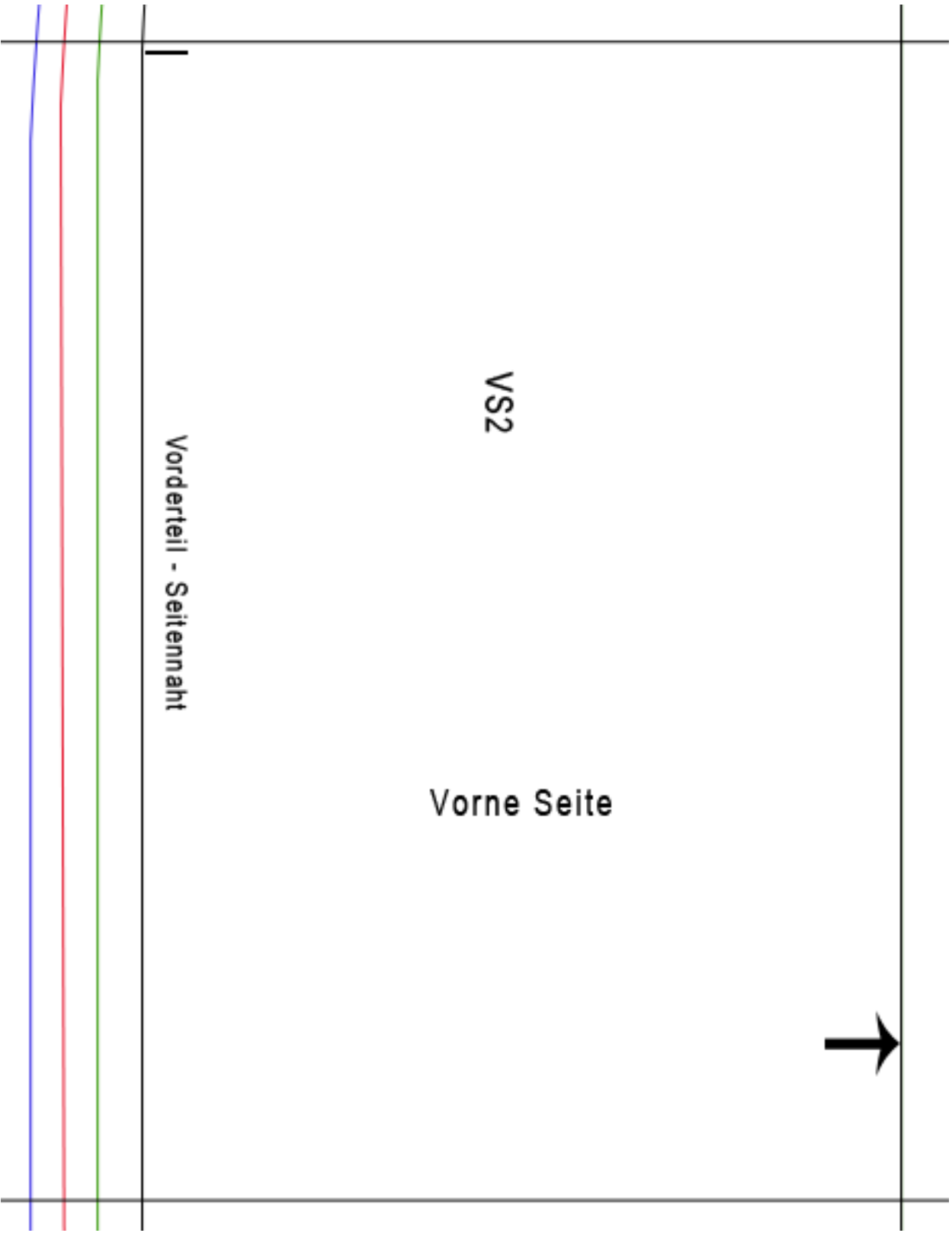
VM3

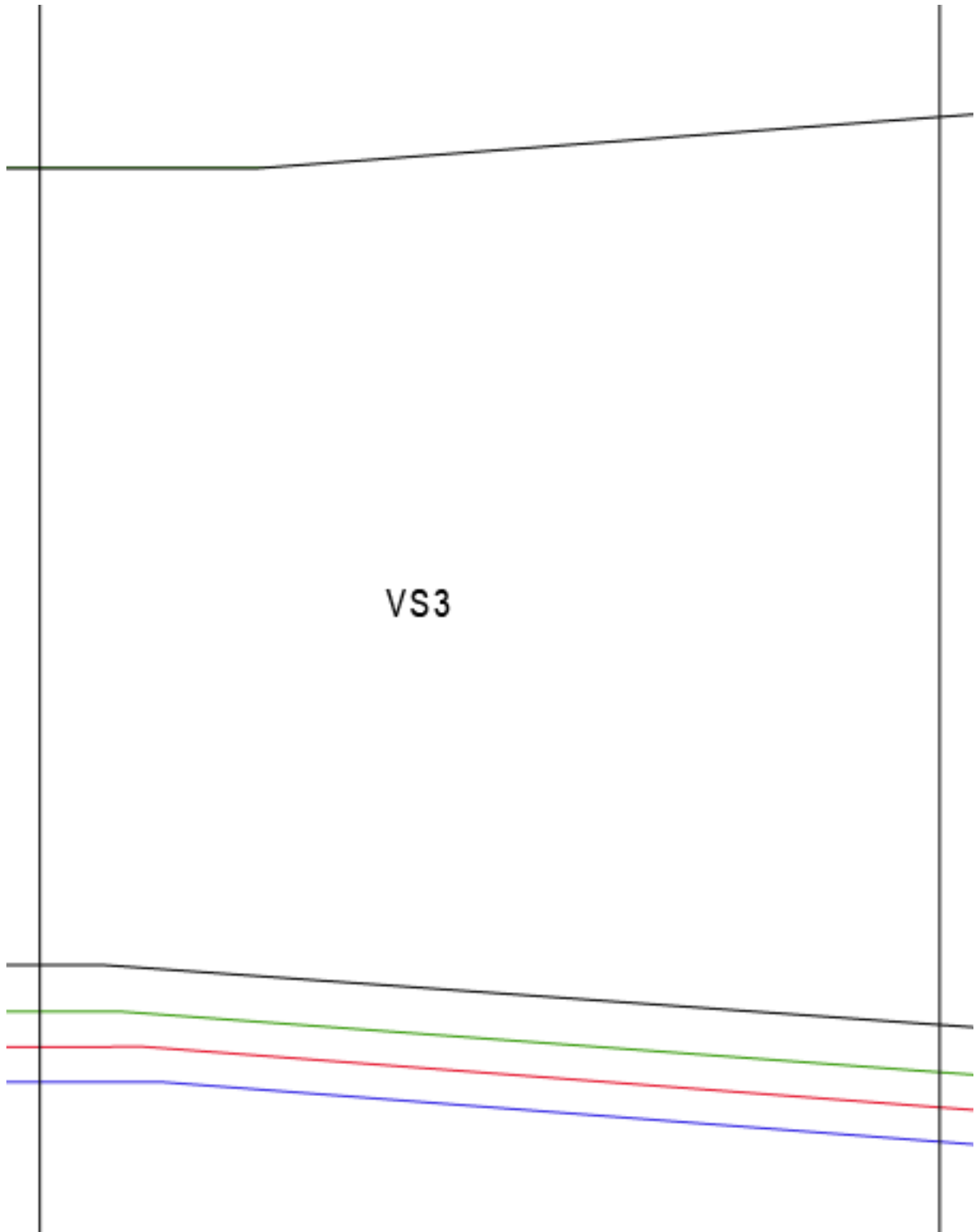


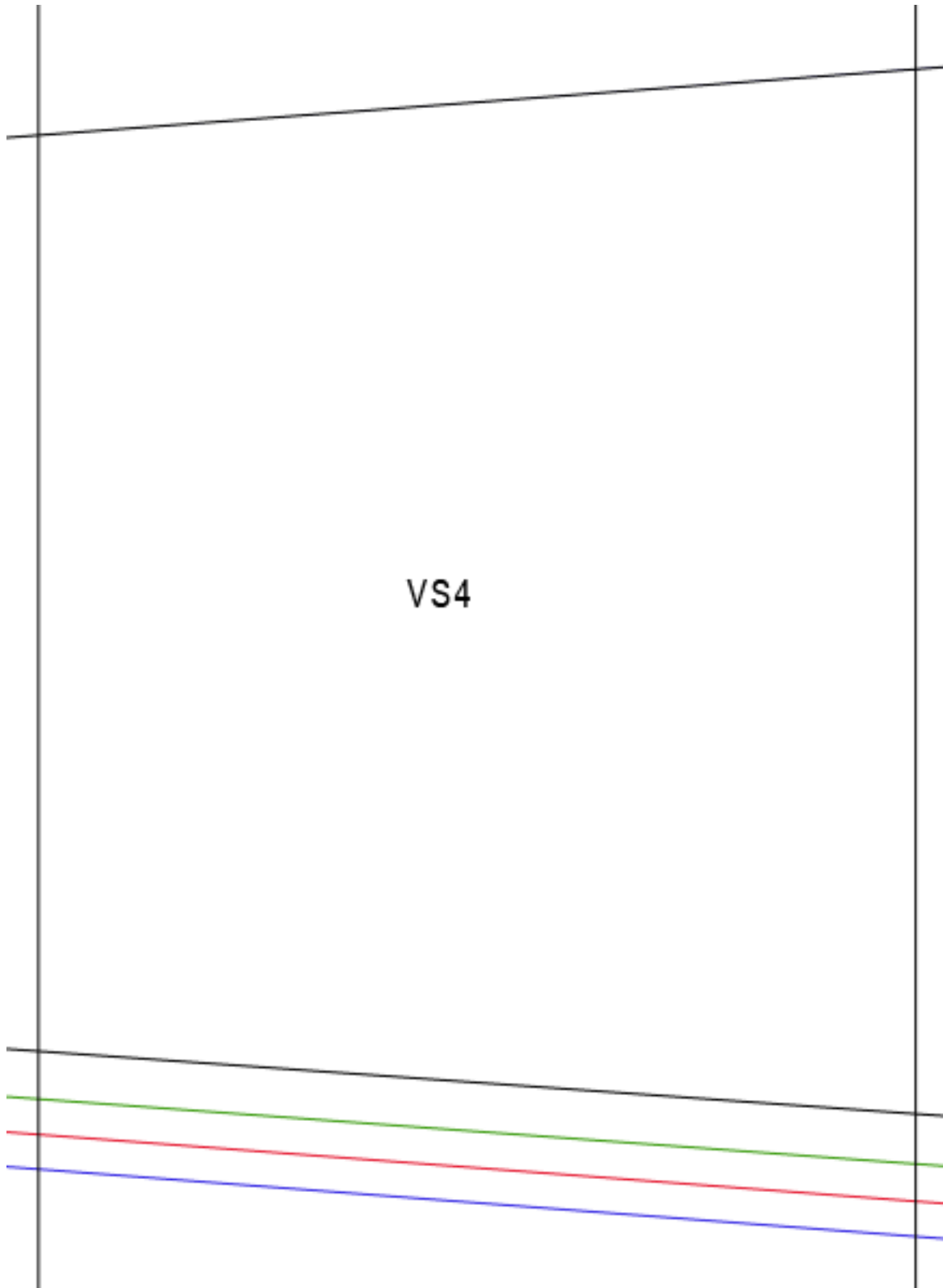




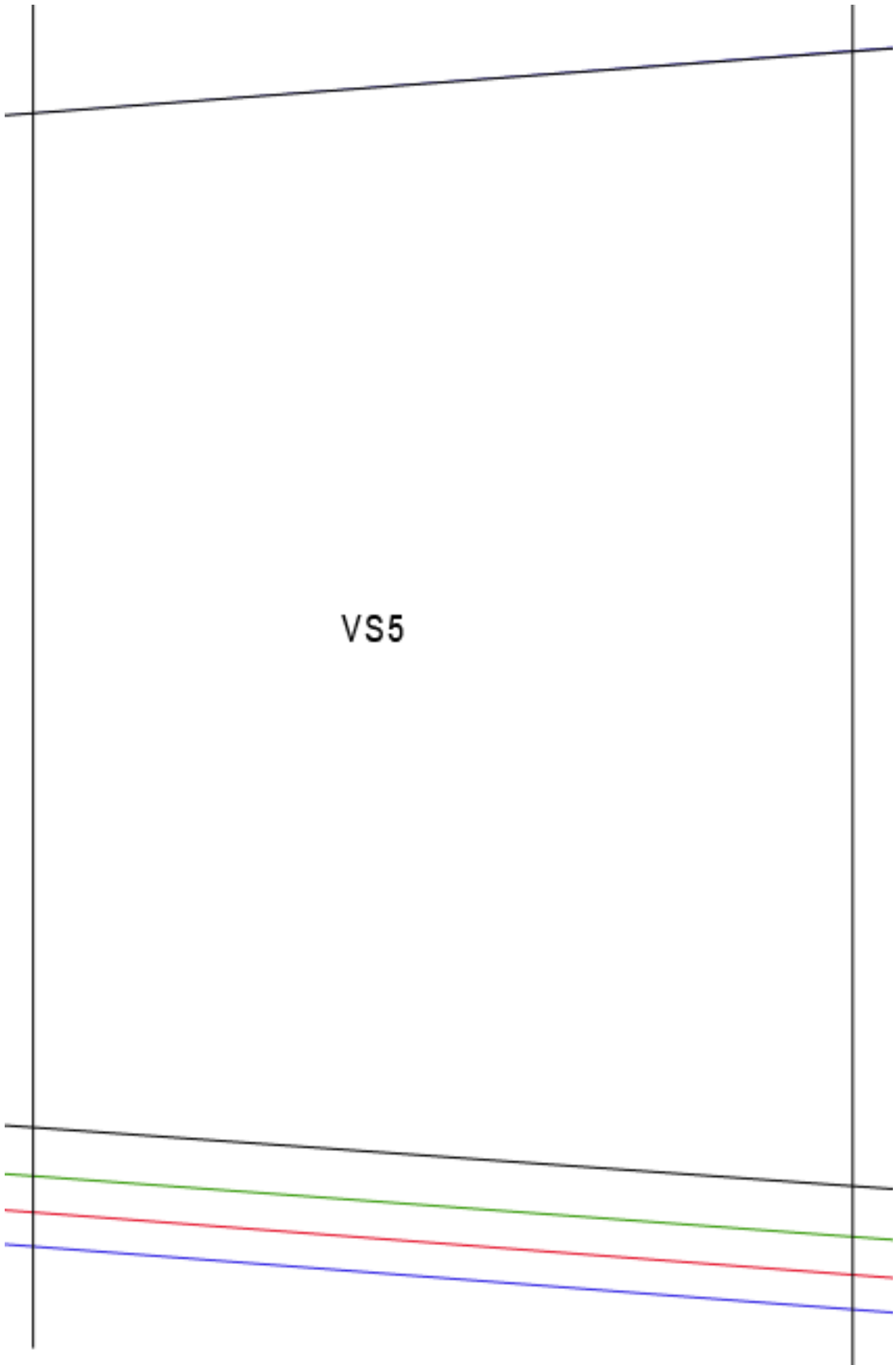




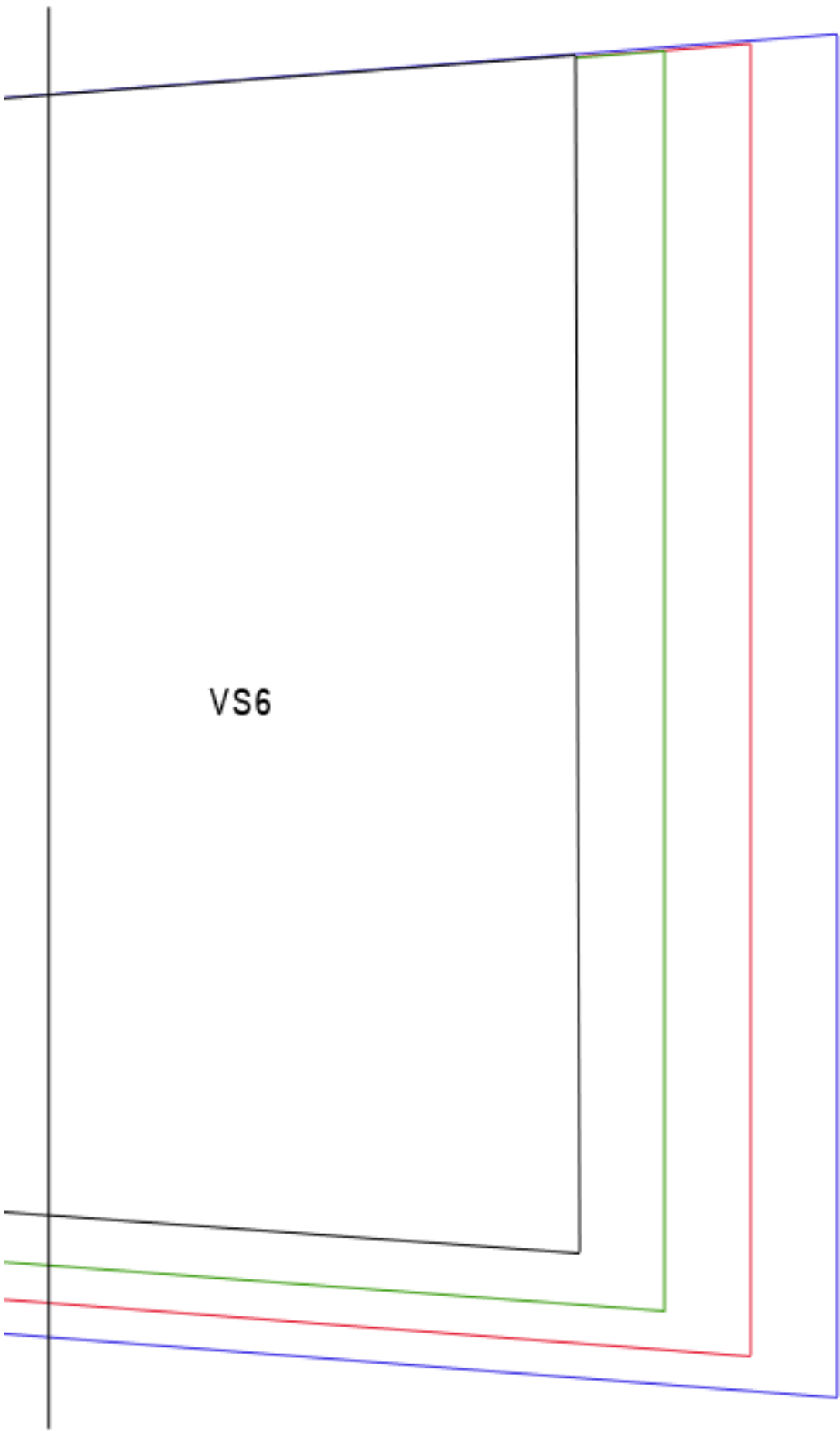




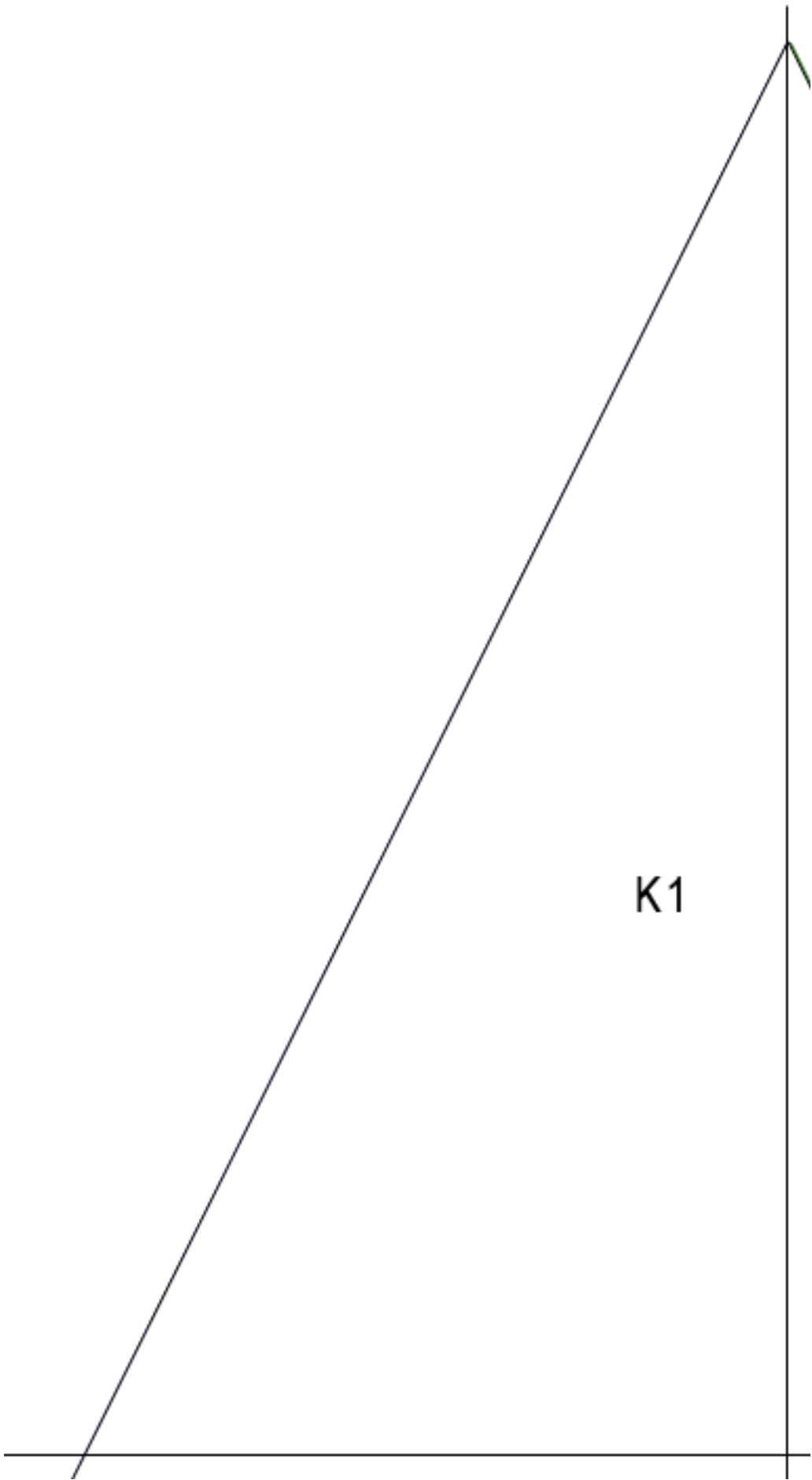
VS4

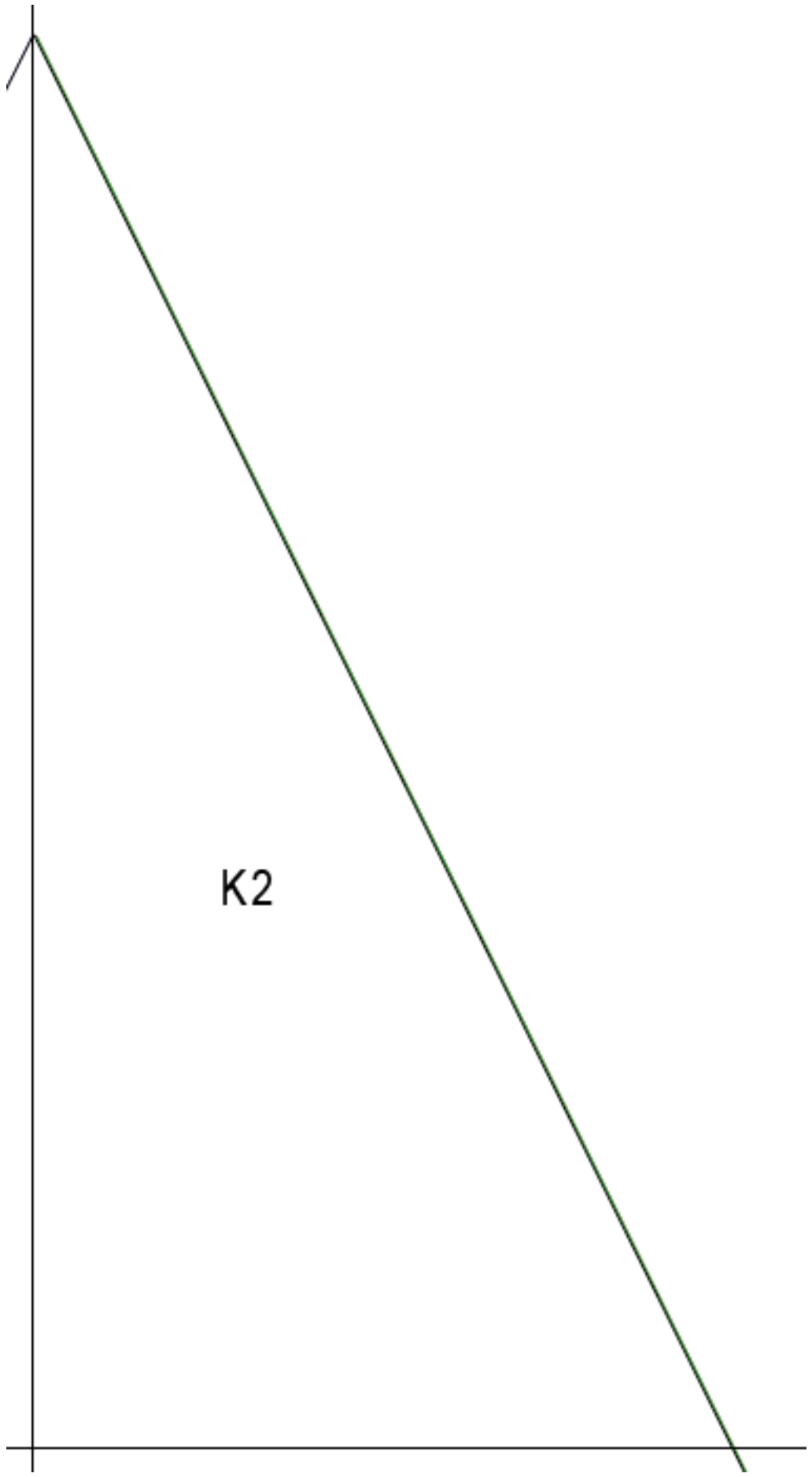


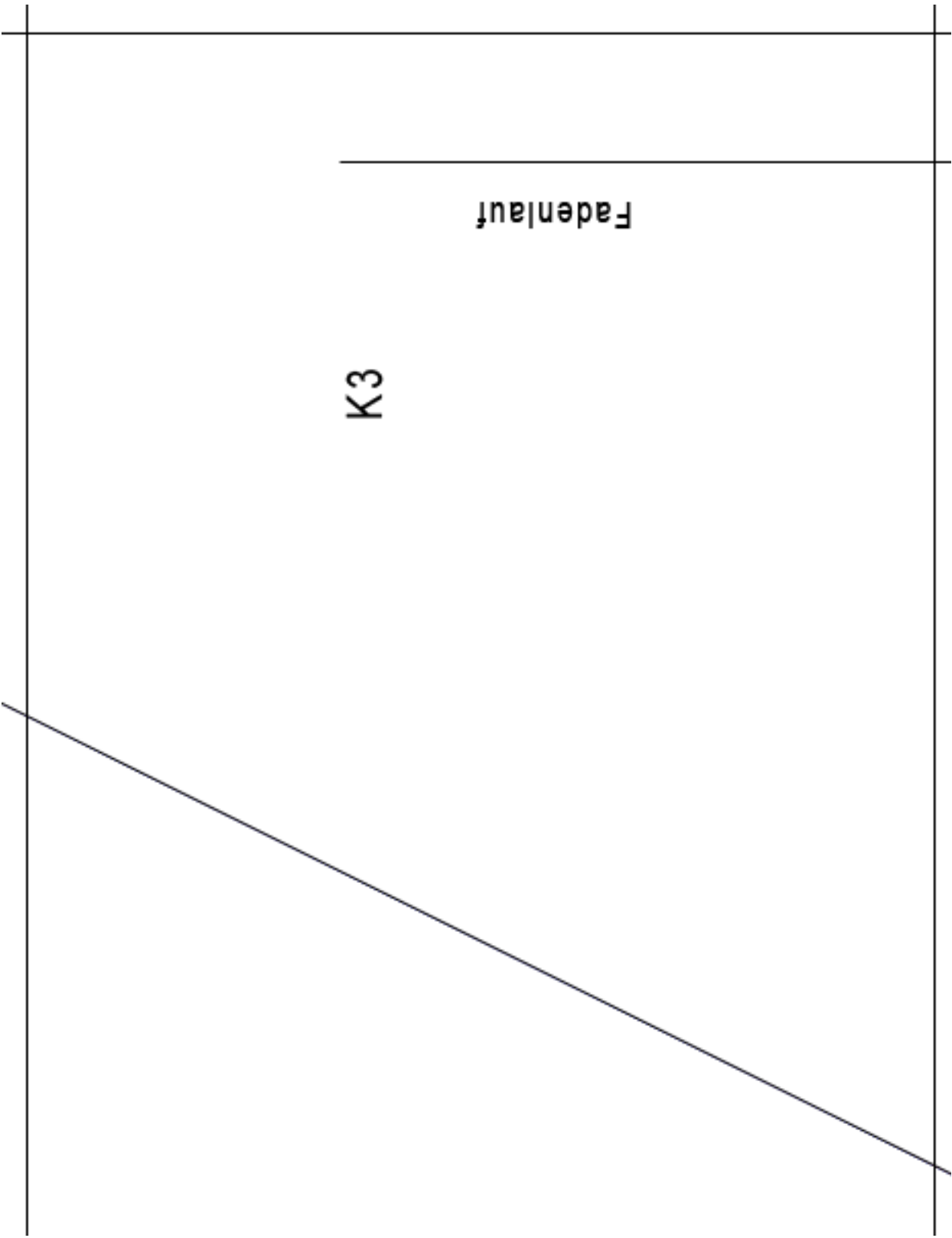
VS5



VS6





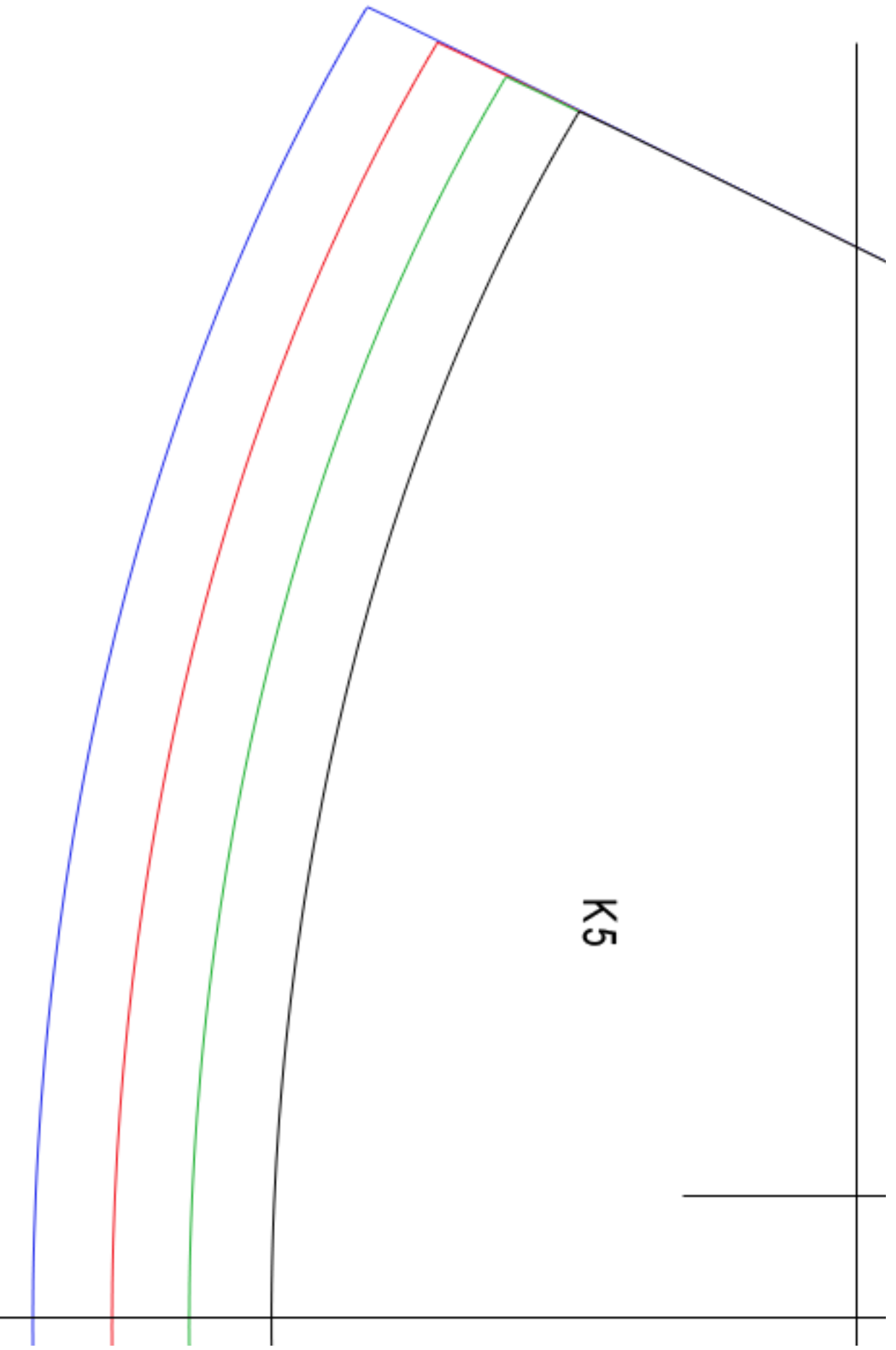


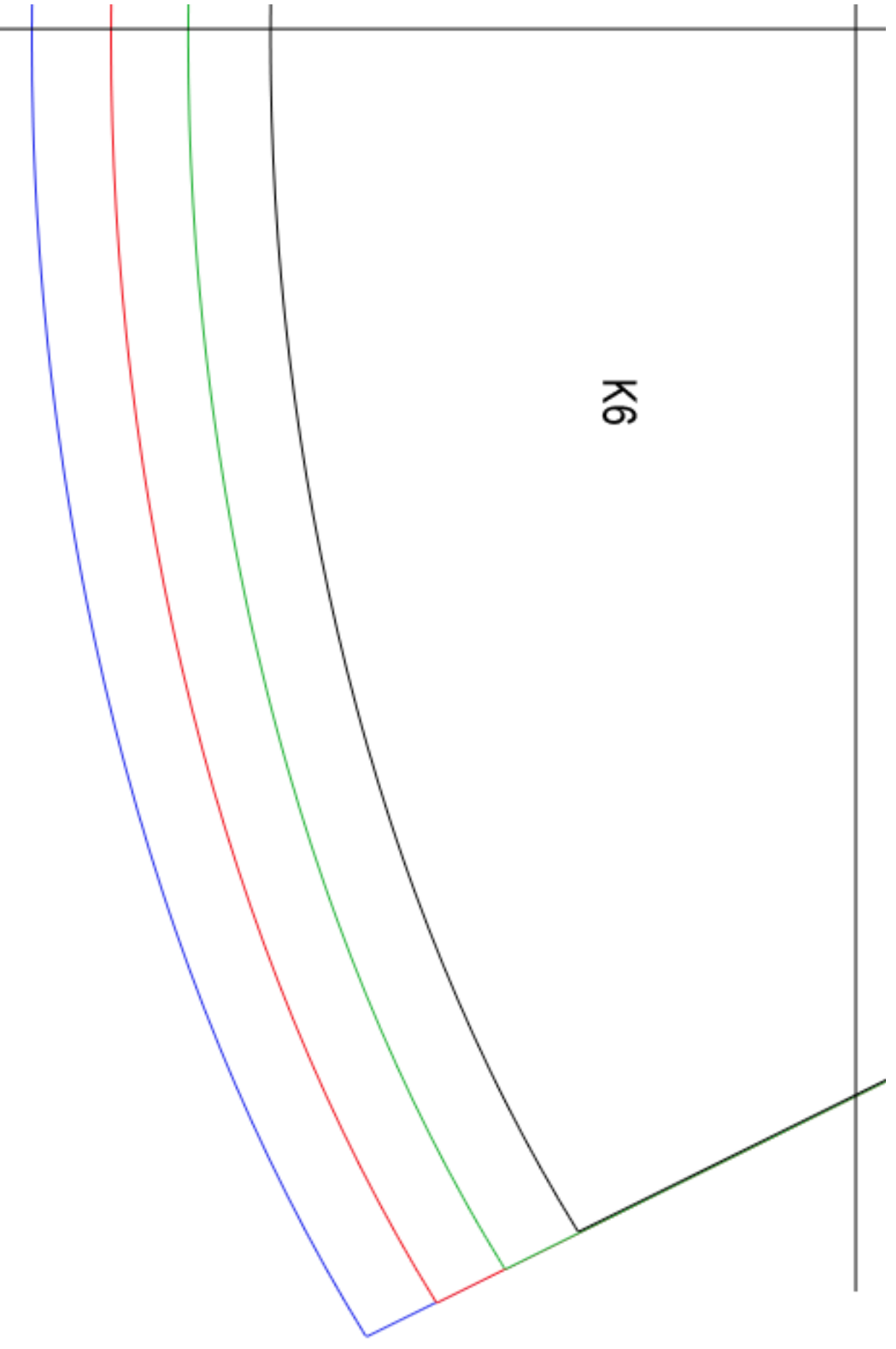


A diagram showing a rectangular frame defined by two vertical lines and a horizontal top line. A diagonal line starts from the bottom-left corner of the frame and extends upwards and to the right, ending at the right vertical line. The area between the diagonal line and the right vertical line is shaded in light blue. The text 'Keileinsatz' is written vertically in the center of the frame, and 'K4' is written vertically in the shaded area.

K4

Keileinsatz





K6